

We're
full of
surprises.

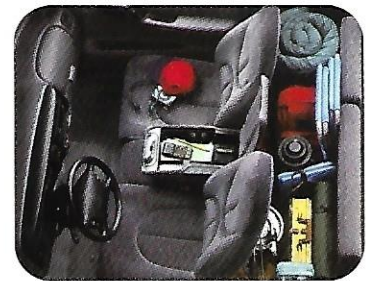
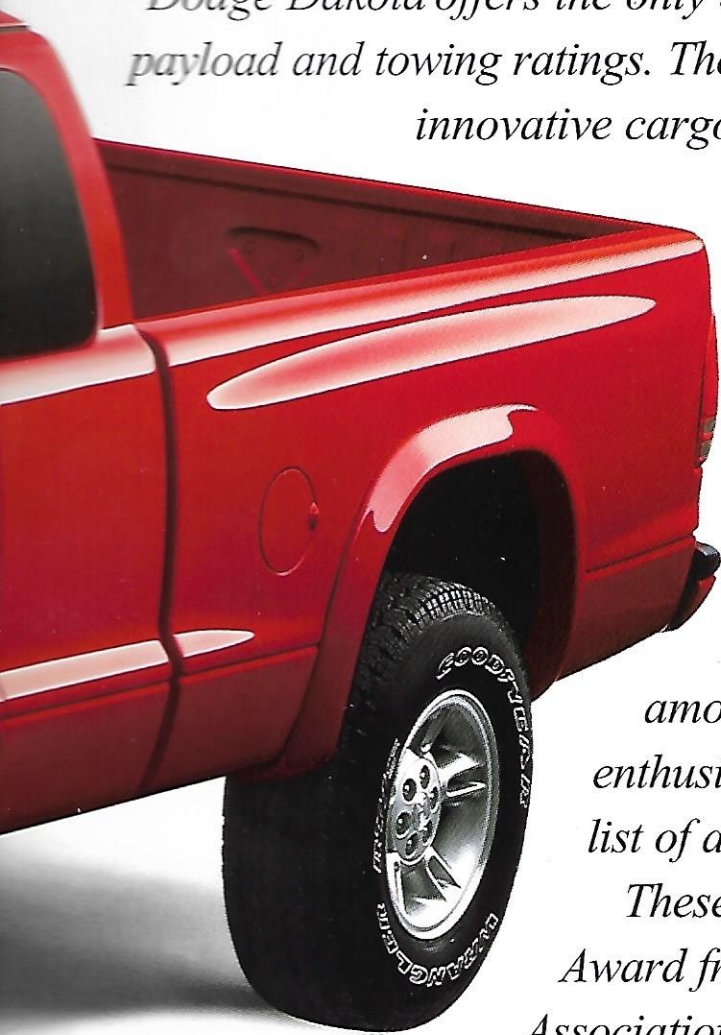




Full-filled. *From its aggressive, Ram-inspired lines to the thunderous response of its Magnum® power, this performance-oriented compact pickup gives a feeling of authority every time it hits the road.*



Dodge Dakota offers the only available V8 in its class. The highest payload and towing ratings. The roomiest-in-class interior. And an innovative cargo bed that converts into two separate spaces. Dakota also gives you a choice of 4x2 or 4x4, regular or Club Cab®, and 6.5-foot or 8-foot cargo bed. And there's the ultimate street truck: Dakota 5.9 R/T. A clear superiority in size and capability has won Dakota a devoted following among sport pickup enthusiasts — and a long list of awards.



These honors include the Truck of Texas Award from the Texas Automobile Writers Association, SmartMoney magazine's "Best Buys of the Year" award for compact pickups, Kiplinger's Personal Finance Magazine "Best in Class" and "First for Safety" awards, Sport Truck of the Year Award for 1997 and 1998 from Sport Truck magazine, and Strategic Vision's award for "Best Ownership Experience" in compact pickups.*

Don't be surprised when you feel the same way.

* The Kiplinger Washington Editors, Inc.



V6

GOOD
RAYS



DAKOTA *SPORT*

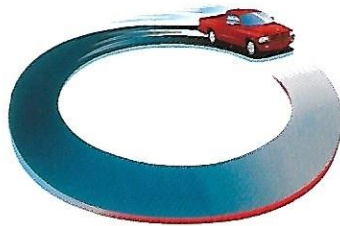
MAXX TRAC

The perpetual en



Sport Truck of the Year for 1997 and 1998.

"Terrific engine, chassis, and steering." That's why Sport Truck magazine has named Dakota



36-foot turning radius on regular cab models.

Nimble steering geometry delivers a tight



Its 17x9-inch cast aluminum wheels and Goodyear Eagle RS-A tires give Dakota R/T a confident stance to match its powerful 250-horsepower Magnum® 5.9-liter V8 engine.



otion machine.

er has one handful
vered so much. Dakota
s shift-on-the-fly transfer
es let you move from 4x2
x4 high range to meet any
d's ever-changing demands
traction and torque.



*The Dodge/Skip Barber
Driving School and the
Skip Barber Racing*



*School have chosen Dodge as the exclusive supplier of
vehicles and engines for all of their teaching and racing
operations. For information, call 1-800-221-1131,
e-mail speed@skipbarber.com or visit the Web site
at www.skipbarber.com.*



A mover, not a shaker.



Bring on the rough roads because Dakota's agile suspension includes modified front shocks,

adjusted rear shocks and front stabilizer bar for improved handling and control. With cushioned engine and cab mounts, you have a truck ride that tames even the toughest rock-crunching bumps.



Beneath Dakota's sturdy suspension there's a stiff, strong frame that can shoulder 30,000 pounds per square inch.

Full stainless steel exhaust system, including muffler and tail pipe, for longer life.

Standard rear-wheel antilock brakes help prevent rear-wheel lockup.

Standard front-wheel disc brakes with 11-inch rotors provide steering control while braking. Get maximum control with optional four-wheel disc antilock brakes which help maintain directional stability under hard braking situations.

Standard 15-gallon and optional 22-gallon fuel tanks are made of high-density polyethylene and mounted within the frame rails for safety.

Stiff three-section carbon steel frame maintains body integrity while allowing full suspension flex.

Cab is isolated from road noise and shocks by six rubber cab mounts outboard of the frame.

Inverted rubber "V" engine mounts, specifically tuned to each engine, reduce power train vibration and exterior noise.

The available 31-inch tires on 4x4 models include 15x8-inch cast aluminum wheels, color-keyed wheel covers and rear stabilizer bar to improve handling performance.

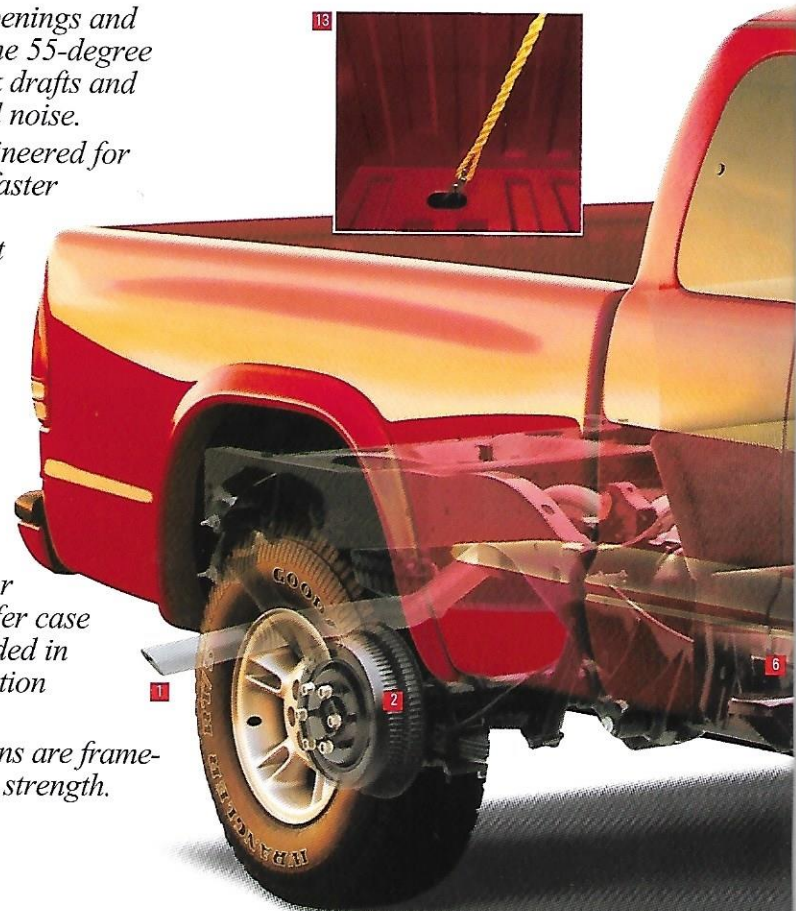
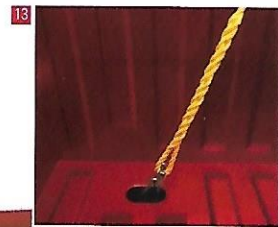
9 Double-sealed door openings and flush-mount glass on the 55-degree raked windshield block drafts and seal out road and wind noise.

10 Steering geometry engineered for tighter turning circle, faster response and better feedback for significant handling improvement.

11 Shift-on-the-fly 4x4 transfer cases allow shifting from 4x2 to 4x4 high gear without stopping, for convenience in varying terrain and traction conditions.

12 Skid plate protection for front suspension, transfer case and fuel tank are included in the optional 4x4 protection package.

13 Recessed cargo tie-downs are frame-mounted for additional strength.

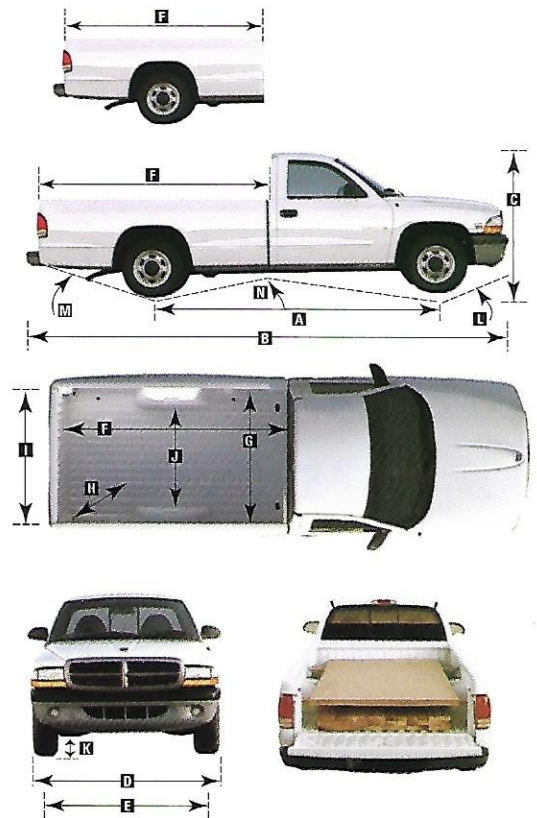


Dimensions (inches)	Regular Cab Short Bed	Regular Cab [®] Long Bed	Club Cab [®] Short Bed
Wheelbase	112.0	123.9	131.0
Overall Length	196.0	214.5	215.0
Overall Height (4x2/4x4)	65.2/67.9	65.1	65.6/68.1
Overall Width	71.5	71.5	71.5
Track (4x2/4x4)			
Front	60.5/60.8	60.5	60.5/60.8
Rear	61.5	61.5	61.5
Box Length (feet)	6.5	8.0	6.5
Box Width	59.3	59.3	59.3
Box Depth	17.5	17.5	17.5
Tailgate Opening	53.3	53.3	53.3
Width Between Wheelhouses	45.1	45.1	45.1

4x2 only

Exterior Dimensions (inches)

Model	Ground Clearance At Rest		Angle of Approach (Degrees)		Angle of Departure (Degrees)		Breakover Angle (Degrees)	
	K		L		M		N	
	4x2	4x4	4x2	4x4	4x2	4x4	4x2	4x4
Regular Cab Short Bed	8.2/9.2	7.3/9.8	22.7	29.0	19.7	22.5	19.0	19.5
Regular Cab Long Bed	8.2/9.4		22.7		17.5		17.4	
Club Cab Short Bed	8.4/9.3	7.1/9.4	23.3	29.1	19.8	22.4	17.6	17.6



Recesses built into the cargo box allow for two-tier loading, giving you the fullest use of Dakota's bed space. And with the only available eight-foot bed in its class, you'll have plenty of room for carrying 4x8-foot sheets of plywood with the tailgate closed.





DAKOTA *SPORT*



Uncompron

*Dakota performance you can rely on with
Magnum® power for crisp acceleration, super
torque and flexibility from the widest range of
engines in the compact pickup class. Shared
characteristics of all our Magnum engines
include short-stroke design for less friction and*



*energy loss. Increased strength and rigidity
through extra crankshaft overlap and bearing
areas. "Barrel" type intake manifolds for
greater airflow and combustion. Plus, "high
swirl" combustion technology that delivers
better fuel mileage and less tendency to knock.*

Magnum® Engine Features:

Sequential multipoint fuel injection (SMPI) provides immediate throttle response because fuel is delivered specifically to each cylinder by its own injector.

Progressive-bore throttle body increases horsepower by introducing greater airflow into the combustion process.

Variable lightweight aluminum intake manifold has stronger but thinner walls to increase air volume while helping to get more air into the combustion process.

High-flow exhaust manifolds help move exhaust gases out quickly, maximizing the exhaust flow for increased horsepower.

Port-stem valves help air move more quickly into the combustion chamber.

Hardened metal rocker arm fulcrums increase valve train and engine durability.

Extra-thick rocker arm covers with silicone gaskets provide better sealing against dirt and make the engine quieter.

Timing belt accessory drive with automatic tensioner (V6 and V8) reduces engine vibration and requires less maintenance.

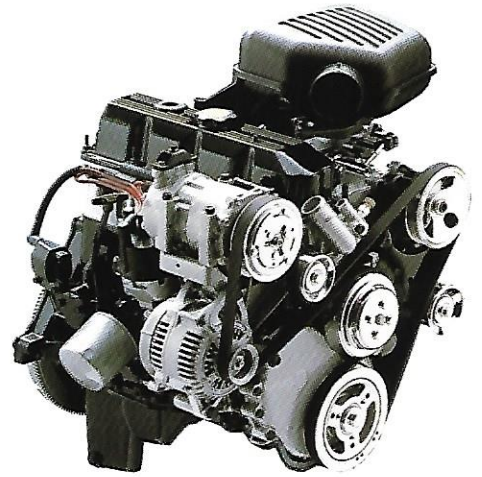
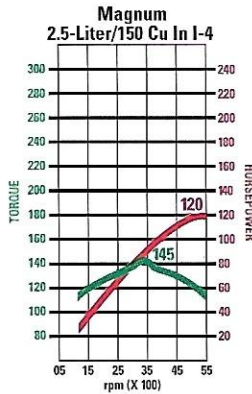
Heavy-duty spark plug wires mean better, longer-lasting ignition performance through increased conductivity and better heat resistance.

High-flow water pump increases the cooling system's efficiency.

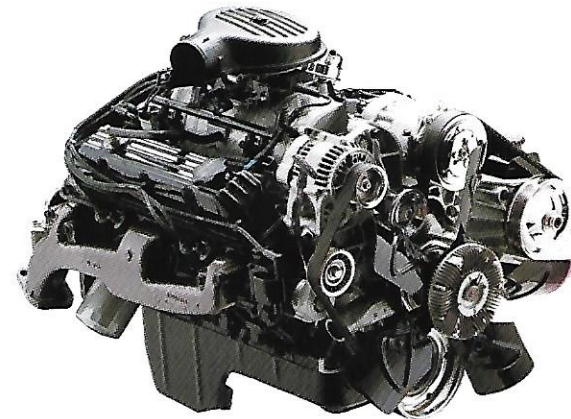
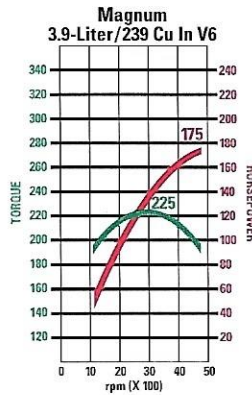


sing.

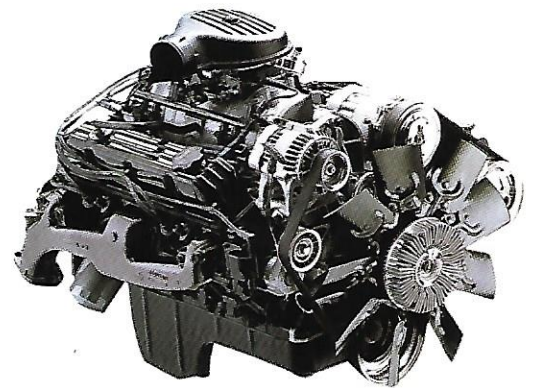
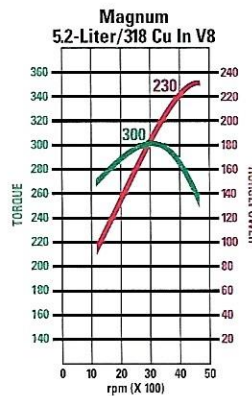
Magnum® 2.5L I-4 120 horsepower: Standard on regular and Club Cab® 4x2 Base and Sport models, with 145 pound-feet of torque at 3,250 rpm. Available with a 5-speed manual transmission only.



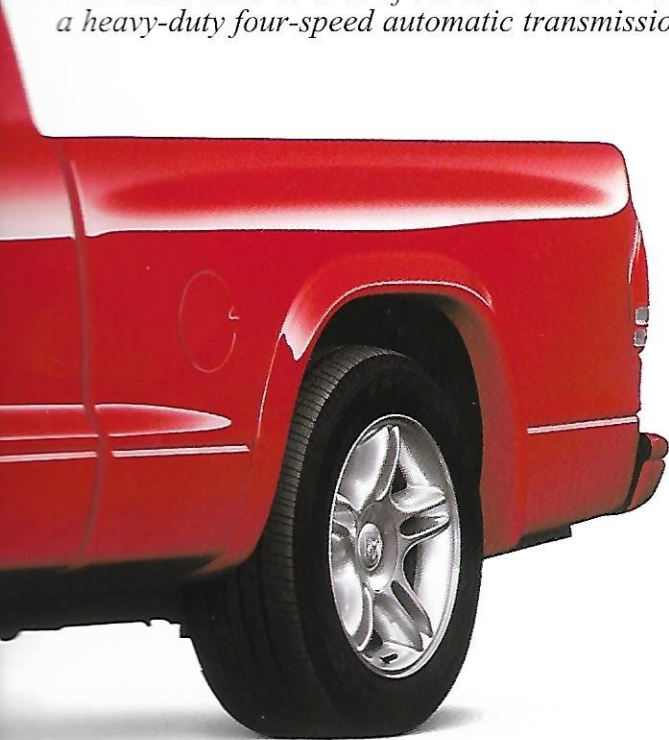
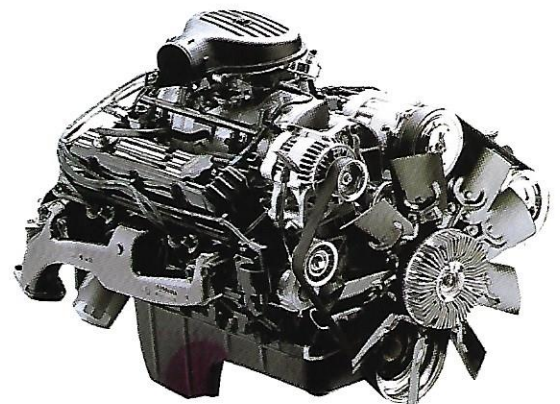
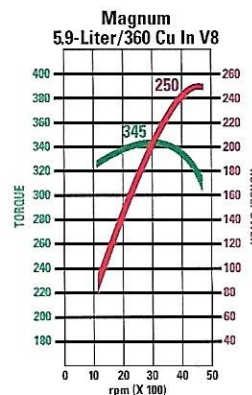
Magnum 3.9L V6 with 175 horsepower: Standard on all 4x4 SLT models; optional on all others. A gutsy standard V6, delivering 225 pound-feet of torque at 3,200 rpm. Available with a 5-speed manual or 4-speed automatic transmission.



Magnum 5.2L V8 with 230 horsepower: Meet one of only two V8s in the Dakota class. The other one is below. This adrenaline pump sends out 300 pound-feet of torque at 3,200 rpm. Available with a heavy-duty 5-speed manual or heavy-duty 4-speed automatic transmission.



Magnum 5.9L V8: 250 horsepower: Exclusive to Dakota R/T, this engine supplies 345 pound-feet of torque at 3,200 rpm, making it the muscle master in its class. Take control of the 5.9L's muscle with a heavy-duty four-speed automatic transmission.



Pick up, put in, hook



Three simple words: best in class. That's how we describe both Dakota towing and payload. Check out options like the Heavy-Duty Service Group, a choice of three axle ratios, and the Trailer Tow Preparation Group. Take it all around, everywhere you go, Dakota is one hard worker that always comes up smiling.

Properly secure all cargo before transporting.

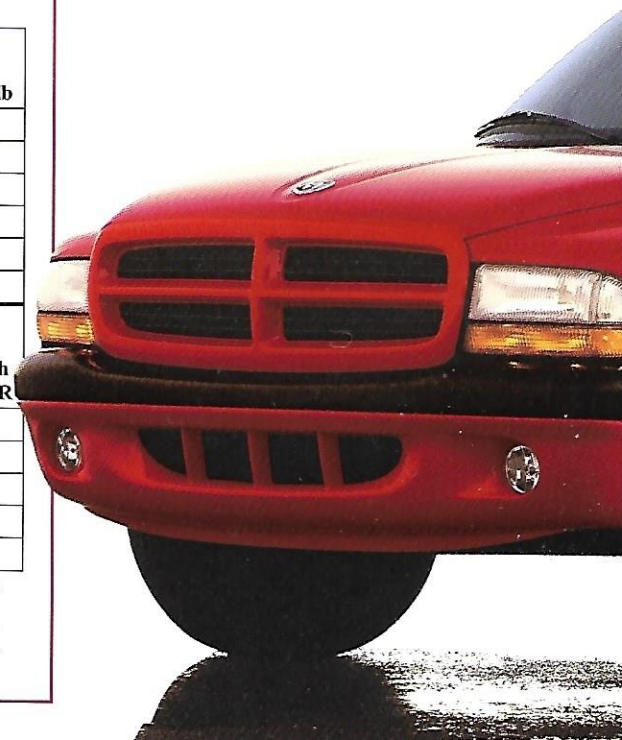


Power Train and Performance Specifications

Engine	Transmission	HP	Torque lb-ft	Gross Combination Weight Rating			
				Standard Capacity		Upgraded Capacity	
				Axle Ratio	GCWR ⁽¹⁾ lb	Axle Ratio	GCWR ⁽¹⁾ lb
2.5L I-4 Magnum ⁸	Man 5-Spd	120	145	3.55	5,400	3.92	5,800
3.9L V6 Magnum	Man 5-Spd	175	225	3.21	7,500	3.55	8,000
3.9L V6 Magnum	Auto 4-Spd	175	225	3.55	8,800	3.92	9,200
5.2L V8 Magnum	Man HD 5-Spd	230	300	3.55	9,500	3.92	10,500
5.2L V8 Magnum	Auto HD 4-Spd	230	300	3.55	9,200	3.92	10,500
5.9L V8 Magnum	Auto HD 4-Spd	250	345	3.92	10,500	—	—

	Magnum Engines				Available Payload Rating (lb)		Available Trailer Weight Allowances ⁽²⁾ (lb)	
	I-4	V6	V8	V8 ⁽³⁾	Standard	Optional	Standard	Optional with 10,500 GCWR
Regular Cab 4x2 6.5-Ft Box	S	O	O	O	1,275	2,000 ⁽⁴⁾	1,900	6,700
Regular Cab 4x2 8-Ft Box	S	O	O		1,275	2,000 ⁽⁴⁾	1,900	6,700
Regular Cab 4x4 6.5-Ft Box	S	O			1,450	2,000	4,100	6,500
Club Cab ⁵ 4x2 6.5-Ft Box	S	O	O	O	1,275	1,450, 2,000 ⁽⁴⁾	2,000	6,500
Club Cab 4x4 6.5-Ft Box	S	O			1,450	1,800	3,900	6,500

⁽¹⁾Gross Combination Weight Rating. ⁽²⁾ Standard Trailer Tow Weight Allowance is a guide based on an unloaded truck with standard equipment. Higher Trailer Weight Allowances are available with certain power train and axle ratio combinations. Weight allowance must always be reduced by the weight of optional equipment, trailer hitch, passengers (other than driver) and cargo in truck. Maximum tongue weight depends on the tow weight allowance and the payload. Load-carrying hitches are recommended for all trailers over 2,000 lb. See dealer for details on payload, trailer weight allowances and recommended towing practices. ⁽³⁾ Available on Sport models with the R T Sport Group. ⁽⁴⁾ Not available with I-4 Magnum.



1, haul off...



Dakota R/T is one pickup that hauls, even when loaded. You can fill it with up to 1,275 pounds of your favorite gear or a maximum of 6,400 pounds. Want to haul even more? You can opt for other Dakota models to carry up to 7,000 pounds of cargo. Dakotas equipped with the optional 5.2-liter Magnum® V8 offer a maximum towing capacity of 6,700. In fact, Dakota has a higher-rated axle capacity than any truck in its class. And for the long haul, we offer a 22-gallon fuel tank — the largest in its class.



Driving



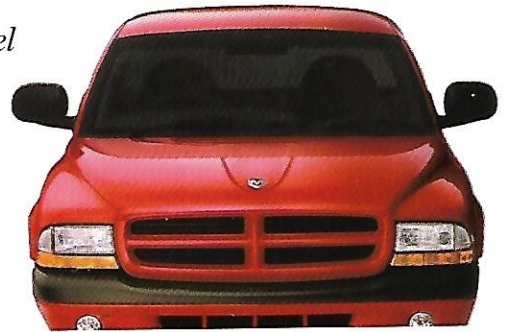
It's no wonder Dakota inspires so much loyalty in its owners — it's the ultimate compact pickup. Available interior features include a new overhead console design with Light Group (premium overhead console shown), a driver power window one-touch-down feature, a new removable cassette/CD storage area in the full-floor console, and available remote radio controls conveniently located on the steering wheel.



ambition.



Beneath, beside and in front of Dakota's instrument panel are available door panel map pockets, a deep glove box and an available mini-business console, all of which provide plenty of storage for everything from CDs and cellular phones to magazines and maps. And since your eyes will be on the road a lot more than they will be on the interior, we're just as proud of Dakota's outstanding everything-within-reach ergonomics and excellent all-around visibility.







Fill 'er up.



The magazine writers call it superiority in room. We just call it comfort. It means having more overall interior room than any other vehicle in its class.

Five-position adjustable seat belts with traveling buckles increase comfort for driver and outboard front passenger alike, no matter what their height.



With the roomiest overall interior of any compact pickup, you can pack Dakota without feeling like you've been packed in yourself. Height accommodation has guided design of the front seats, allowing a full 7.4 inches of fore and aft space. Front-seat passengers get excellent leg room, while rear-seat passengers have easier entrance and exit.



Room for six people, and places for all the things they'll need. Places like a deep glove box, available door pockets, handy center console, and Club Cab® rear bench with underseat storage (see below).





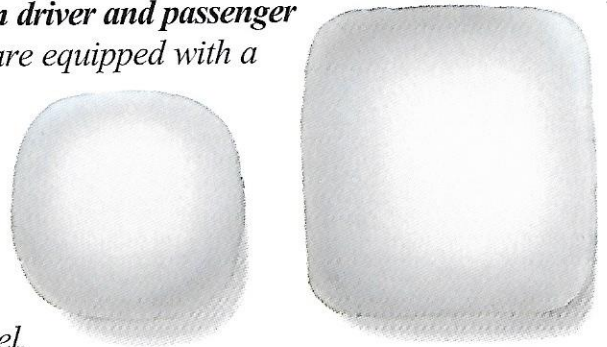
Properly secure all cargo before transporting.

Somehow the word "pi



You may not be used to this much confidence and security in a pickup, including details like a key fob with panic button and remote keyless entry system.

Next Generation driver and passenger side air bags* are equipped with a passenger side on/off switch mounted on the lower central part of the instrument panel.

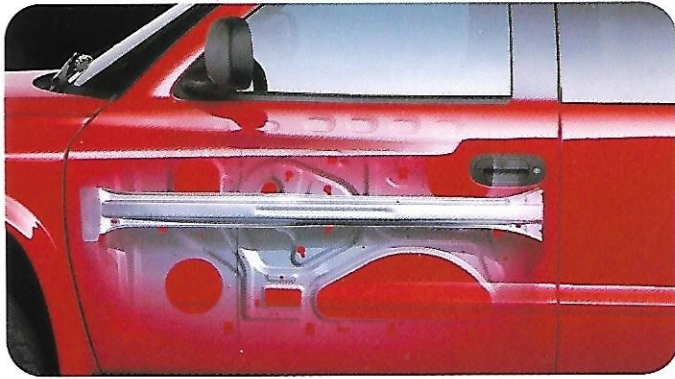


Certified to the Federal Regulations that allow less forceful air bags. Always use seat belts. Remember a backseat is the safest place for children in Dakota Club Cab. Rearward-facing child seats can be used in the front seat only with the passenger air bag turned off.

Dakota's built-in crumple zones, knee blockers on the lower instrument panel, steering column, front seat-backs and roof are all engineered to absorb energy.

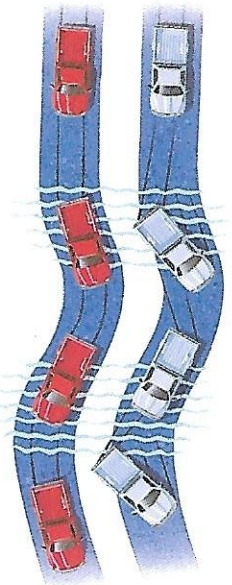


cup” just doesn’t cut it.



High-strength steel door beams offer extra protection from side-impact intrusion collisions.

Optional four-wheel antilock brakes offer the kind of control (near right) that non-ABS systems just can't match, when weather and road conditions are less than ideal (far right).



Standard features and options.

Dakota models include:

- Next Generation driver and front-passenger with passenger air
- on/off switch
- B-pillar-mounted
- 117-ampere
- 600-ampere, maintenance-free
- Power-assisted front disc/rear drum with rear antilock
- Antichip coating on lower bodyside, galvanized steel
- Front side windows
- Stainless steel
- Tinted, all windows
- Analog, speedometer, tachometer, displays for VF
- gauges for fuel level, engine coolant
- warning lamps for brake system, ABS, check gauges, check
- high-beam headlamps on, seat belts, low washer fluid, turn signal
- upshift indicator, overdrive off, automatic transmission
- speed control on and security alarm system
- Cigar, located on lower center of instrument panel
- Interior, dome lamp with door actuation
- Manual 5'x7" black fixed

- Pickup Box** — Double-wall construction with one-piece, high-strength steel floor, cargo tie-down loops and two-tier loading capabilities
- Seat Belts** — Three-point Unibelt for outboard seating positions; front outboard positions include height-adjustable shoulder belts with traveling inboard buckles; lap belts in front and rear (Club Cab® models only) center positions
- Sound System** — AM/FM stereo radio with cassette player and four speakers
- Steering** — Power-assisted, rack-and-pinion (4x2 models); power-assisted, recirculating ball (4x4 models)
- Suspension**
 - 4x2
 - Front, upper and lower "A" arms, coil springs, heavy-duty gas-charged shock absorbers and stabilizer bar; rear, live axle, four-leaf longitudinal springs and heavy-duty gas-charged shock absorbers
 - 4x4
 - Front, upper and lower "A" arms, torsion bars, heavy-duty gas-charged shock absorbers and stabilizer bar; rear, live axle, four-leaf two-stage longitudinal springs and heavy-duty gas-charged shock absorbers
- Tailgate** — Removable with caliper latches
- Wiper System** — Windshield, two-speed with intermittent wipe mode

* Certified to the Federal Regulations that allow less forceful air bags. Always use seat belts. Remember a backseat is the safest place for children in Dakota Club Cabs. Rearward-facing child seats can be used in the front seat only with the passenger air bag turned off.

Features, options and package groups.

* = Included. P = Available as part of a package. O = Optional. Blank Space = Not available.

	Transmission	Regular cab			Club Cab®		
		Base	Sport	SLT	Base	Sport	SLT
Magnum® I-4*	5-spd manual	21W	21B		21W	21B	
Magnum V6	5-spd manual	23W	23B	23G	23W	23B	23G
Magnum V6	4-spd automatic	24W	24B	24G	24W	24B	24G
Magnum V8	5-spd manual		25B	25G		25B	25G
Magnum V8	4-spd automatic		26B	26G		26B	26G
Magnum V8*	4-spd automatic		28B			28B	
Conditioning — CFC-free refrigerant		0	0	•	0	0	•
— Limited-slip differential		0	0	0	0	0	0
— 4-wheel antilock		0	0	0	0	0	0
Paints							
— Front, painted black		•	•		•	•	
— Front, bright				•			•
— Rear, painted black		•	•		•	•	
— Rear, bright				•			•
— Maximum engine		0	0	0	0	0	0
— Convenience Group — Electronic speed control and tilt steering column			0	0		0	0
— Tank — 15-gallon		•	•		•	•	
— 22-gallon		0	0	•	0	•	•
— Sliding rear window (dark tinted)		0	0	0	0	0	0
Paints							
— Painted Dark Silver Metallic		•			•		
— Painted body-color			•			•	
— Bright				•			•
— Heavy-Duty Electrical Group — 136-ampere alternator and 750-ampere battery		0	0	0	0	0	0
— Heavy-Duty Service Group — Heavy-Duty Electrical Group, 22-gallon fuel tank and maximum engine cooling		0	0	0	0	0	0
Lighting							
— Fog lamps			0	0		0	0
Interior							
— Light Group — Power outlet, lowline overhead console, exterior cargo lamp and interior lamps for glove box, ashtray, courtesy and engine compartment		0	0	•	0	0	•
Exterior							
— Dual power 5'x7" black, fixed			0	0		0	0
— Dual power 6'x9" black, folding			0	0		0	0
Interior							
— Rearview automatic dimming day/night (packaged with Power/Overhead Convenience Group)			0	0		0	0
— Lower, bodyside protective				0			0
— Power Convenience Group — Power windows, power door locks and remote keyless entry system			0	0		0	0
— Power/Overhead Convenience Group — Full overhead console and automatic dimming day/night mirror and							
— Lower Convenience Group			0	0		0	0

	Regular cab			Club Cab®		
	Base	Sport	SLT	Base	Sport	SLT
part Group						
5.9L V8 engine, 4-spd automatic transmission, Light Group, Deluxe Convenience Group, cloth bucket seats, color-keyed wheel flares, "Dakota R/T" door decal, body-color front and rear bumper, heavy-duty rear sway bar, leather-wrapped steering wheel, suspension lowered by 1 inch, P255/55R17 BSW tires, 17"x9" cast aluminum wheels, limited-slip differential, 3.92 axle ratio (4x2 models only)		0			0	
Interior						
Vinyl	•					
Ashford Cloth	0					
Niagara Cloth		•	•	•	•	•
Seating						
Bench with integrated head restraints	•					
40/20/40 split-bench with center folding armrest		•	•	•	•	•
High-back buckets with center floor console		0	0		0	0
Trailer						
Premium cloth 60/40 split-bench with underseat storage (Club Cabs)				•	•	•
Plus Group						
Power Convenience Group, power 5"x7" mirrors, and Tire and Handling Group			0			0
Audio System						
AM/FM stereo premium radio and cassette player with graphic equalizer, changer controls and 8 Infinity® speakers		0	0		0	0
AM/FM stereo premium radio and CD player with graphic equalizer and 8 Infinity speakers		0	0		0	0
AM/FM stereo premium radio with combination cassette/CD player, graphic equalizer and 8 Infinity speakers		0	0		0	0
Plus Group — 5.2L V8 engine, Tire and Handling Group, Light Group, air conditioning, fog lamps, 22-gallon fuel tank		0			0	
Stabilizer Bar — Rear (included in Tire and Handling Group)					P	P
Tilt Column — Tilt (included in Deluxe Convenience Group)	0	0	0	0	0	0
Tire and Handling Group						
4x2 P255/65R15 BSW tires, 15"x8" cast aluminum wheels and rear stabilizer bar (not available with R/T sport package or 3.21 rear axle ratio)		0	0		0	0
4x4 31"x10.5" R15 OWL all-terrain, 15"x8" cast aluminum wheels, body-color wheel flares, and rear stabilizer bar		0	0		0	0
Tires						
P215/75R15 BSW all-season	•			•		
P215/75R15 OWL all-season (4x2 models)		•	•		•	•
P235/75R15XL BSW all-terrain (4x2 models)		0	0		0	0
P255/65R15 BSW all-season (4x2 models)		0	0		0	0
P255/65R17 BSW all-season (4x2 models)		0			0	
P235/75R15XL OWL all-terrain (4x4 models)		P	P		P	P
31"x10.5" R15 OWL all-terrain (4x4 models) (includes body-color wheel flares)		0	0		0	0
Trailer Tow Prep Group — Class IV platform hitch receiver, 7-lead wiring harness mounted on the hitch for direct plug-in, and 7/4 pin adapter wiring pigtail (requires Heavy-Duty Service Group and not available with 2.5L I-4 engine)	0	0	0	0	0	0
Transmissions						
4-speed automatic with overdrive (V6 engine)	0	0	0	0	0	0
4-speed heavy-duty automatic with overdrive (V8 engine)		0	0		0	0
Transfer Case — 4x4 models only						
NV231 2-speed part-time with "shift on the fly" (V6 engine)	•	•	•	•	•	•
NV231 heavy-duty 2-speed part-time with "shift on the fly" (V8 engine)		0	0		0	0
NV242 HD full-time (V8 auto transmission only)		0	0		0	0
Wheels						
15"x7" styled steel, painted	•			•		
15"x7" 5-spoke aluminum		•	•		•	•
15"x8" cast aluminum (included with Tire and Handling Group)		0	0		0	0
17"x9" cast aluminum (requires R/T sport package) (4x2 models)		0			0	
Windows						
Rear sliding with solar-control glass	0	0	0	0	0	0
Rear window, one-piece	•	•	•	•	•	•
Rear flip-out quarter windows				•	•	•

Models only.
Sport models with R/T package only.

This catalog. Since the time of printing, some of the information you'll find in this catalog may have been updated. Ask your dealer for details. Some of the equipment shown or described throughout this catalog is available at extra cost. Specifications, descriptions, illustrative materials and all competitive comparisons contained herein are as accurate as known at the time this publication was approved for printing. Chrysler Corporation reserves the right to discontinue models at any time or change specifications without notice or without incurring obligation. All options are required in combination with other options. For the price of the model with the equipment you desire, or verification of specifications contained here, see your Dodge dealer.

Colors, models, wheels and trim.



Flame Red



Metallic Red



Deep Amethyst Pearl Coat



Black



Bright White



Light Driftwood Satin Glow



Solar Yellow



Forest Green Pearl Coat



Emerald Green Pearl Coat



Intense Blue Pearl Coat

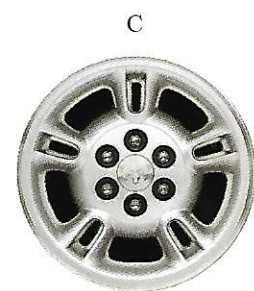
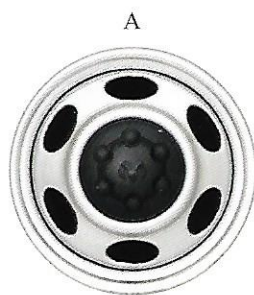
Wheels

A 15x7" styled steel wheel

B 15x7" five-spoke aluminum wheel

C 15x8" cast aluminum wheel

D 17x9" cast aluminum wheel (R/T only)



Fabric and Trim

The selection of interior seat coverings includes (from left to right): Ashford Cloth bench seat shown in Mist Gray (available on Base regular cab models), heavy-duty vinyl bench seat shown in Mist Gray (standard on Base regular cab models) and Niagara Cloth bucket seat shown in Mist Gray (available on Sport and SLT models, also in Agate).



Dodge accessories from Mopar.



Brush Grille and Brush Grille
Grilles accent Dakota's bold look
 and provide tough protection in black steel,
 chrome-resistant silver, black anodized
 aluminum or bright Hexavalent
 chrome finish.



**Dakota
 R/T
 Fiber-
 glass
 Tonneau
 Cover and Molded
 Running Boards**

strut/latch system allows easy access
 for cover. Running boards offer
 extensive corrosion-resistance.

Lock down valuables. Box's single
 or dual lid opens with full-length,
 stainless steel, riveted hinges.

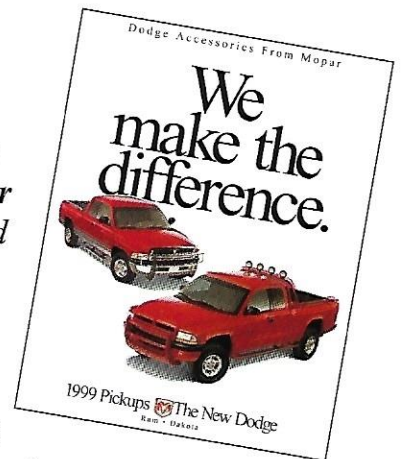
Cam action
 opens box
 automatically
 when stainless
 steel locking
 handles are
 released.

Water-resistant,
 welded with three pieces



**Dodge
 accessories
 from Mopar**
 are designed
 and engi-
 neered by
 the same
 innovators
 who created

Dakota. So tailor your Dakota to
 your needs with accessories that look
 good, fit right, and are covered by
 either the 3-year/36,000-mile New
 Vehicle Limited Warranty, or the
 12-month/12,000-mile Mopar



We'd like to continue this relationship.

Call Us At: 1-800-4-A-DODGE
Talk to someone who can tell
you what you want to know about
the 1999 Dodge lineup. You can
order product literature, get the
price of a vehicle equipped the way
you like it, and find the Dodge
dealer closest to you.

On the Web: www.4adodge.com
The award-winning Dodge Web site
provides you with an information
source you can access directly
24 hours a day from the comfort
of your home or office. Pricing,
competitive comparisons, and dealer
information are just a click away.

CustomerOne[®]★

Chrysler Corporation and its dealers have made a long-term commitment to outstanding customer service. More than 100,000 dealership management, sales and service people are participating in the most extensive educational initiative in automotive history. It's called Customer One and it establishes one unbreakable rule: Treat every customer with the honesty and respect they deserve.

3/36 Customer One Care[™] Plan
Your Dodge vehicle is covered by Chrysler Corporation's 3/36 Customer One Care Plan.*

CustomerOne[®] Care[™]

3/36 Bumper-To-Bumper

24 Hour Roadside Assistance

This coverage includes a 3-year or 36,000-

mile Bumper-To-Bumper Limited Warranty as well as roadside assistance for 3 years or 36,000 miles. Call 1-800-521-2779 for 24-hour, 7-day-a-week emergency road service.[†] A 5-year or 100,000-mile Outer-Panel Rust-Through Limited Warranty covers the repair of exterior sheet metal if perforated by corrosion. Restrictions apply. See your dealer for details.

*Excludes wiper blades, clutch and brake linings, brake rotors and drums, normal maintenance items and tires (covered by their own manufacturer's warranty).

[†]Road service provided by Cross Country Motor Club, Inc. (In California, Cross Country Motor Club of California, Inc.)



CHRYSLER
Service Contracts

Be Serious About Service
Additional protection for Dodge owners is available through optional Chrysler Service Contracts. These service plans are available in a variety of time and mileage combinations to meet your driving needs. Ask your dealer for more information or call 1-800-442-2666.

Mopar To keep your CUSTOMER CARE Dodge vehicle performing at its optimum, make sure it's serviced regularly at your Dodge dealership, where highly-trained technicians have access to a complete stock of Mopar replacement parts and the sophisticated equipment today's cars demand.

 **CHRYSLER FINANCIAL** Chrysler Financial*

offers a full range of automotive financing which provides flexible terms for qualified buyers. Many of these plans can be customized to fit your particular budget and make your new vehicle even more affordable. They include the College Graduate Program and Gold Key Lease short-term financing. Ask your Sales Consultant for details.

*Chrysler Financial's programs are offered subject to availability and state and local laws.

Chrysler Lease Plans

Chrysler Financial's Gold Key Lease has the flexibility to fit your vehicle choice and your lifestyle. If the idea of driving a new vehicle more often without penalties sounds great, ask about Gold Key Lease.

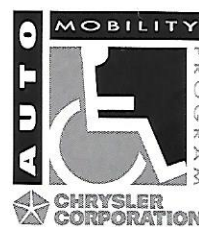


ON THE JOB Commercial operators of eligible

Dodge cars, trucks, and vans can learn about our Dodge "On The Job" program by calling 1-877-ON THE JOB.

Commercial Finance Options

Chrysler Financial's new Commercial Finance Options Program offers special finance and lease options to small and midsize businesses, municipalities, and small fleet operators. "Line of Credit" financing is also available under this program. Please see your dealer for details.



Cash reimbursement is available for qualified adaptive driving devices on 1999 Dodge vehicles. Ask your dealer or call Automobility Headquarters at 1-800-255-9877.

Printed in U.S.A. on recycled paper.
8/98 74-383-9921 650M



The New Dodge

We're all about change.

There is no status quo at Dodge. We've transformed the way people drive with new kinds of vehicles that are an embodiment of the latest technologies. Alternate fuels, exotic materials, and new configurations are constantly being explored. Advances in safety technology, suspension systems, engine dynamics, and ergonomics are continually evaluated. Because we know that no matter how fast things change these days, people still want cars and trucks that are good looking, well-built, and exciting to drive. And to ensure that you get all the information you need to make an intelligent purchase, there are automotive experts awaiting your call at 1-800-4-A-DODGE. We've also created a Web site you can visit at anytime from anywhere in the world at: www.4adodge.com.



The New Dodge