

2010
F-150 **BUILT Ford TOUGH**



2010
F-150 

LISTEN, THIS THING'S **MADE FOR YOU.**
 IT'S CLEARLY **THE BEST** IN SO MANY WAYS.



F-150 FX4 SuperCrew in Sterling Grey with FX4 Luxury Package and other available equipment

MPG AND MUSCLE

- Unbeaten in its class, the 4.6L 3-valve V8 4x2 gets 21 mpg hwy.¹ ■ 5.4L 3-valve V8 4x2 gets 20 mpg hwy.¹
- 320 hp and 390 lb.-ft. on the 5.4L 3-valve V8 FFV (E85 fuel)² ■ Strongest frame in the class

BEST TOWING

- Best-in-class capability: 11,300 lbs. ■ Standard Trailer Sway Control ■ Available Trailer Brake Controller, Rear View Camera and Telescoping Trailer Tow Mirrors

BEST PAYLOAD

- Best-in-class capability: 3,030 lbs. ■ Best-in-class cargo box volume ■ Available class-exclusive Box Side Steps and Tailgate Step

SAFEST FULL-SIZE PICKUP

- NHTSA 5-Star crash test ratings and IIHS "Top Safety Pick" ■ Standard AdvanceTrac® with RSC® (Roll Stability Control™) ■ Standard Safety Canopy® System with side-curtain airbags

BEST INTERIOR

- Quietest F-150 ever ■ "Active Comfort" seats
- Class-exclusive flat loadfloor in SuperCab and SuperCrew ■ One-touch folding rear seat in SuperCrew

BEST CONNECTIVITY

- Available exclusive Ford Work Solutions™ In-Dash Computer ■ Available Ford SYNC® with new 911 Assist™, plus Traffic, Directions and Information ■ Available voice-activated Navigation System with class-exclusive SIRIUS Travel Link™

THE 2010 F-150

From design to manufacturing and every point in between, the F-150 team lives and breathes trucks. They're real truck people. In fact, they know 'em so well, F-Series has been America's best-selling line of trucks for 32 years running.

SO WHAT MAKES THE 2010 F-150 THE RIGHT TRUCK FOR YOU?

Let's break it down. It's got the highest towing and payload capabilities available in its class.³ Plus, it's got standard Trailer Sway Control and big new brakes, so you'll feel confident and secure towing the heaviest loads. It makes dealing with cargo fast and easy. It's also America's safest full-size pickup.⁴ And it's built with the kind of long-lasting durability that means you could be handing it down to the grandkids. Clearly, this truck gets it done, and then some.

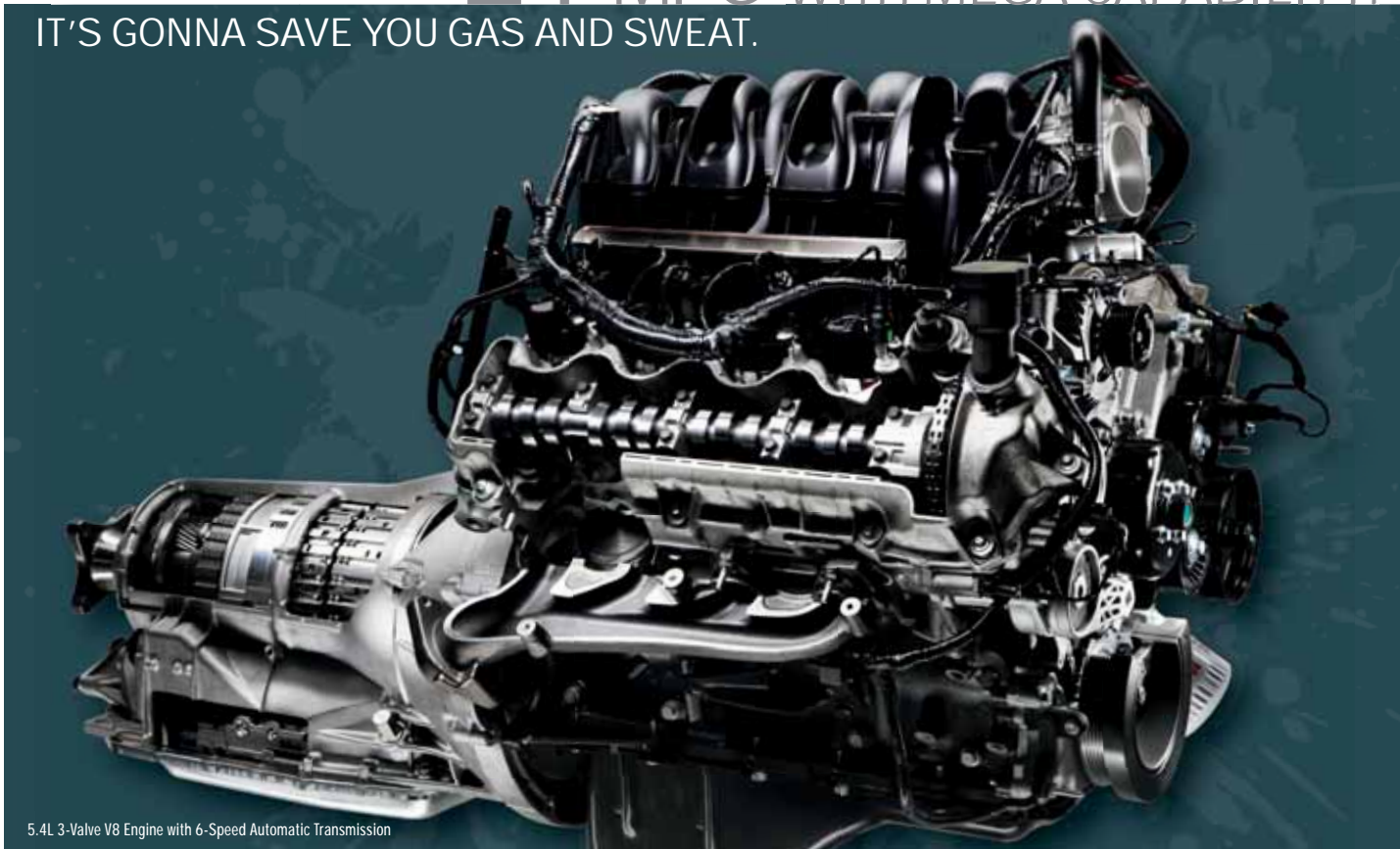
THEY DON'T JUST CALL IT BUILT FORD TOUGH® — THEY BACK IT UP.

¹Class is non-hybrid Full-Size Pickups under 8500 lbs. GVWR. 2010 EPA-estimated 15 mpg city/21 hwy. on 4.6L 3-valve V8 4x2; 2009 EPA-estimated 14 mpg city/20 hwy. on 5.4L 3-valve V8 4x2. ²320 hp and 390 lb.-ft. torque ratings require E85 fuel. ³Best-in-class payload and towing when properly equipped. Class is Full-Size Pickups under 8500 lbs. GVWR. ⁴Based on both NHTSA 5-Star crash test ratings and IIHS Top Safety Pick. Star ratings are part of the U.S. Department of Transportation's Safercar.gov program (www.safercar.gov).

Vehicles throughout this PDF may be shown with optional and aftermarket equipment. Features listed may be optional and/or require additional equipment. See Specifications section for feature availability.

21 MPG WITH MEGA CAPABILITY.

IT'S GONNA SAVE YOU GAS AND SWEAT.



5.4L 3-Valve V8 Engine with 6-Speed Automatic Transmission

5.4L 3-VALVE V8 FFV engine with the 6-speed auto gets up to 320 hp, and twists out 390 lb.-ft. of torque.¹ This arrangement gives you best-in-class towing capability of up to 11,300 lbs. The 5.4L is also Flex Fuel (FFV) capable, so you can run it on E85 (85% ethanol/15% gasoline), straight gas or any blend of the two.

4.6L 3-VALVE V8 engine with the 6-speed auto is a spectacular combination of power and fuel efficiency. Configured and tuned specifically for F-150, it puts out 292 hp and 320 lb.-ft. of torque, and can deliver an unbeaten 21 mpg.²

4.6L 2-VALVE V8 with a 4-speed auto is the standard powertrain. It makes 248 hp and 294 lb.-ft. of torque – 22% more hp than the previous generation's base V6 with an automatic – while achieving the same fuel economy numbers.

6-SPEED AUTOMATIC transmission, standard on the 5.4L and 4.6L 3-valve V8s, features a sophisticated gear set design that has proven reliable and durable over millions of customer equivalent miles. Heavy-duty clutch pads, a beefy hydraulic pump and a forged output shaft certify it Built Ford Tough.[®]

On the power front, you've got plenty of smart choices. The 4.6L 3-valve V8 and 6-speed auto lead the way. This hardworking combo achieves up to an **UNBEATEN 21 MPG HWY** – no other gas-only powertrain in the class² can top it.

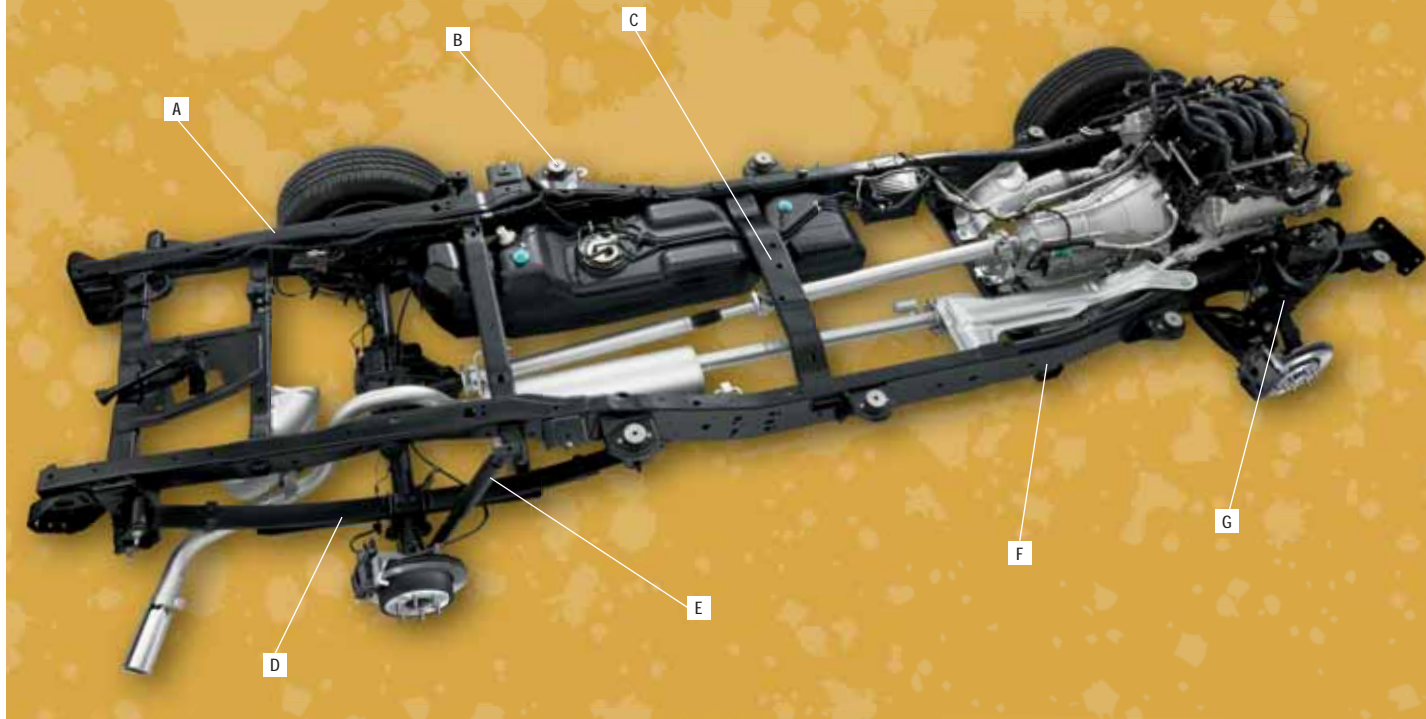
Fact is, Ford is working to help meet your fuel efficiency needs in lots of ways. The **ENGINE CONTROL SYSTEMS** precisely manage fuel delivery to the combustion chamber and actively reduce fuel burned during deceleration. The **EXHAUST SYSTEM** delivers great performance (and sound) via a lightweight, straight-through design that minimizes backpressure and encourages engine breathing. Improved aerodynamics and weight reductions help this F-150 cut through the air with less drag than the previous generation, which helps achieve fuel efficiency and reduce wind noise. **OPEN-VALVE INJECTION** on their 3-valve engines delivers a cool air/fuel charge into the cylinder to help maximize combustion, which contributes to maximum power output and fuel efficiency. And the idle speed on 3-valve engines is actively minimized under all conditions to conserve fuel. **FORD SWEATS THE DETAILS** so you don't have to.

POWERTRAIN	Max. Hwy. MPG ²	Max. Payload (lbs.) ³	Max. Towing (lbs.) ³
4.6L 2-Valve V8/4-Speed	19	1,890	6,000
4.6L 3-Valve V8/6-Speed	21	1,980	9,500
5.4L 3-Valve V8/6-Speed	20	3,030	11,300

¹320 hp and 390 lb.-ft. torque ratings require E85 fuel. ²Class is non-hybrid Full-Size Pickups under 8500 lbs. GVWR. 2010 EPA-estimated 15 mpg city/21 hwy. on 4.6L 3-valve V8 4x2; 2009 EPA-estimated 14 mpg city/19 hwy. on 4.6L 2-valve V8 4x2; 2009 EPA-estimated 14 mpg city/20 hwy. on 5.4L 3-valve V8 4x2. ³Maximum capability when properly equipped. See your Ford Dealer for specific equipment and other limitations.

CHECK OUT THE BACKBONE ON THIS BEAST.

IT'S THE STRONGEST IN THE CLASS.



STRONGEST FRAME IN THE CLASS (A) is the backbone of F-150's class-leading capabilities. The fully boxed, ladder-style frame also contributes to the quiet interior and controlled ride.

TUNED SHEAR-STYLE BODY MOUNTS (B) help keep road vibration away from the vehicle body so you can enjoy a quiet, comfortable ride.

THROUGHWELDED, FULLY BOXED CROSSMEMBERS (C) are optimized for strength and precisely positioned to create a flat loadfloor. Throughwelding helps create a highly rigid structure, which mitigates frame flex and contributes to stable towing.

WIDEST REAR LEAF SPRINGS IN THE CLASS (D) are also 6" longer than on the previous generation F-150 for improved axle control, while balancing ride smoothness with best-in-class load capability.

TWIN-TUBE SHOCKS (E) at all 4 corners help refine the ride and improve control in various road conditions. Rear shocks are mounted outside of the frame rails to reduce body lean and enhance rear axle control.

HYDROFORMED FRAME RAILS (F) allow extremely tight tolerances for manufacturing consistency and enhanced structural performance for safety.

COIL-OVER-SHOCK FRONT SUSPENSION (G) includes control arm bushings for added lateral stiffness, yet the system delivers a smooth ride, crisp steering and excellent control.

FULLY BOXED CONSTRUCTION and **HIGH-STRENGTH STEEL** help it deliver that best-in-class strength. In addition to the latest forming and welding technologies, this F-150 frame uses even more high-strength steel than the previous generation. It's in the frame rails and crossmembers, and reinforcing key stress points. Computer-aided engineering and frame-gauge optimization pare down the weight. The results: outstanding towing and hauling capabilities, a remarkably comfortable and quiet ride, and it helps achieve class-leading safety. Now that's the kinda backbone **YOU CAN RELY ON.**

NEWLY UPGRADED BRAKE SYSTEM gives you better brake pedal feel, shorter stopping distances and less brake dust. How's that? The brake booster was modified for better pedal feel. The front rotors' diameter grew 6% larger. The front calipers were revised to support the big new rotors. The master cylinder's piston/bore size grew nearly 12% larger. And the new linings are a Non-Asbestos Organic (NAO) type that generates less dust for cleaner wheels.





2010
F-150 **BUILT TOUGH**

YEAH, WELL YOUR TRAILER'S

REIGN OF TERROR IS OVER.



BEST-IN-CLASS TOWING
11,300 LBS.
ACROSS ALL 3 CABS

F-150 XLT SuperCrew in Tuxedo Black with XLT Chrome Package and other available equipment



TRAILER TOW MIRRORS manually telescope and fold forward or backward so you can get through tight spaces. Whether you're towing or not, the large viewing area and convex lens on these available mirrors help improve visibility and reduce blind spots.

REAR VIEW CAMERA option takes the full-color image from a camera mounted in the tailgate and displays it in your auto-dimming rearview mirror or on the available Navigation System's 8" screen (shown). Just shift into



reverse for a wide-angle view behind the truck. The video display's built-in distance guide is ideal for trailer hookups.

How's that? Check this out: standard **TRAILER SWAY CONTROL** uses a yaw motion sensor in the AdvanceTrac® with RSC® (Roll Stability Control™) system to detect trailer sway through the motions of the truck. AdvanceTrac can then automatically take countermeasures, such as selective wheel braking and reducing engine torque, to help maintain control of both the truck and trailer.¹ Activating **TOW/HAUL MODE** on the 6-speed automatic transmission helps reduce gear hunting, keeping the engine in its optimum power range while cruising or climbing grades. On downhill grades, the transmission uses engine braking to help slow the truck and its load. The factory-integrated **TRAILER BRAKE CONTROLLER** option uses braking input, vehicle speed and information from the vehicle's Anti-lock Brake System (ABS) to balance the performance of the truck brakes and electric trailer brakes. F-150 is the first and only truck that combines class-leading towing capability in every cab type, the stabilization technology of standard Trailer Sway Control, and an optional integrated Trailer Brake Controller. The result: **TOWING CONFIDENCE** like you've never even imagined.



MAX. TOWING (LBS.) ²	Regular Cab	SuperCab	SuperCrew
4.6L 2-Valve V8	6,000	5,800	5,700
4.6L 3-Valve V8	8,400	9,500	9,400
5.4L 3-Valve V8	11,300	11,300	11,300

¹Remember that even advanced technology cannot overcome the laws of physics. It's always possible to lose control of a vehicle due to inappropriate driver input for the conditions. For more information on Ford vehicle stability systems, visit fordvehicles.com. ²Maximum capability when properly equipped. See your Ford Dealer for specific equipment and other limitations.

THIS TRUCK KNOWS HOW TO

HANDLE ANY SITUATION.

BEST-IN-CLASS PAYLOAD
3,030 LBS.



F-150 XLT SuperCab 4x4 in Red Candy with XLT Chrome Package and other available equipment

From lumber to pavers to huge tractor tires, transporting cargo should be fast and easy. F-150's got you covered with:

- **BEST-IN-CLASS CARGO BOX VOLUME**
(up to 81.2 cu. ft.)
- **BEST-IN-CLASS PAYLOAD CAPABILITY**
(up to 3,030 lbs.)
- **BEST AVAILABLE ACCESS**
(optional steps on all 3 sides of the box)

Year after year, Ford puts practical new features on the road before anybody else to help take the hassle out of work and life.

TAILGATE STEP (A) is a class exclusive. It makes accessing the cargo box easy. Just raise the grab bar and flip down the skid-resistant step. This ultra-convenient option stows right in the tailgate.

BOX SIDE STEPS (B) are another class-exclusive F-150 option. There's one on each side of the box and each can handle up to 500 lbs. No hands required – you can deploy or stow them with your foot. They make it easy to reach your cargo, even gear that's deep in the box. No more stepping on the tire.

CARGO MANAGEMENT SYSTEM (C) option is the strongest in the class. The system includes 2 dual-channel side rails and 4 adjustable cleats. The cleats easily lock in place every 3.5" in either the top or bottom rail channels. The optional Cargo Management Accessory Package (shown) adds 2 load bars, a bed divider and a front header bar for additional cleat positions at the front of the box. Optional Pickup Box Storage Bins (shown) are available for use with the Cargo Management System.

STOWABLE BED EXTENDER (D) folds out, clamps together and secures to the tailgate with the bolt-action latch. Made of rugged fiberglass-reinforced polypropylene, this optional 21"-tall barrier lets you haul with the tailgate down or secure smaller loads with the tailgate up. It also folds out of the way when not in use. (Shown with aftermarket bedliner.)



MAX. PAYLOAD (LBS.) ¹	Regular Cab	SuperCab	SuperCrew
4.6L 2-Valve V8	1,890	1,600	1,610
4.6L 3-Valve V8	1,980	1,680	1,680
5.4L 3-Valve V8	3,030	2,660	1,990

¹Maximum capability when properly equipped. See your Ford Dealer for specific equipment and other limitations.

IT'S BUILT TO FOLLOW ORDERS.
 NO WHINING.



F-150 FX4 SuperCrew in Black with FX4 Luxury Package and other available equipment



Navigation System Home Photo Album and SIRIUS Satellite Radio



SIRIUS Travel Link Weather Map



Ford SYNC Phone Interface

YOU TALK. SYNC LISTENS.™

FORD SYNC® GETS NEW 911 ASSIST,™ PLUS TRAFFIC, DIRECTIONS AND INFORMATION. Available Ford SYNC, developed in association with Microsoft®, works with your paired Bluetooth®-enabled mobile phone and digital media player or thumb drive to make calls, play music and more – all with the touch of a button and simple voice commands.¹ With 911 Assist, the system can make an emergency call from your phone directly to a 911 operator if any airbag has deployed.² And now, SYNC features these convenient **DRIVER SERVICES:** Turn-by-turn directions³ ■ Vehicle Health Reports ■ Up-to-the-minute weather³ ■ Traffic alerts³ ■ Business searches³ ■ Personalized business, sports and entertainment news.³ For all the latest details, visit SYNCMYRIDE.COM.

STAY IN TOUCH AND ENTERTAINED.

NAVIGATION WITH SIRIUS TRAVEL LINK™ features easy **VOICE ACTIVATION** for everything from driving directions to accessing tunes. Displayed on an 8" LCD touch screen, the available Navigation System also provides nearly 10 gigabytes of storage space for your photos and music (up to 2400 songs). Class-exclusive SIRIUS Travel Link⁴ comes with a 6-month trial subscription to keep you in the know with up-to-the-minute local traffic, weather, fuel prices, sports scores and movie listings and showtimes. All at your fingertips.

Available **SIRIUS® SATELLITE RADIO** comes with a 6-month trial subscription to get you started surfing more than 130 channels including 100% commercial-free music, plus the best sports, news, talk and entertainment, coast-to-coast.⁴

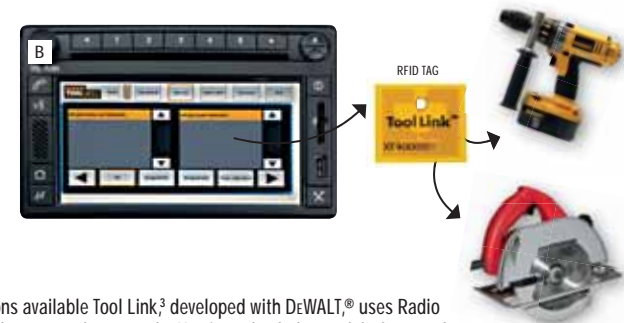
¹Driving while distracted can result in loss of vehicle control. Only use mobile phones and other devices, even with voice commands, when it is safe to do so. ²The vehicle's electrical system (including the battery), the wireless service provider's signal, and a connected mobile phone must all be available and operating for 911 Assist to function properly. These systems may become damaged in a crash. The paired mobile phone must be turned on, connected to SYNC, and the 911 Assist feature enabled in order for 911 to be dialed. ³These SYNC services not available with SIRIUS Travel Link or Navigation System. See your dealer for details. ⁴Real-time traffic monitoring available in select markets. Some features are unavailable while driving. Service available in the 48 contiguous states and Washington, D.C.



GET READY FOR THE KIND OF **TOOL ENVY**
ONLY AN **F-150** CAN INSPIRE.



F-150 XLT in Medium Stone with Ford Work Solutions In-Dash Computer and other available equipment



Only the toughest name in trucks could assemble this all-star lineup of available **SMART TOOLS** for your tough jobs. From a fully equipped mobile office, to security, to tracking the units in your fleet, every position is filled by a pro.

MOBILE-OFFICE COMPUTING POWER. The available Internet-capable in-dash computer, featuring a Windows® CE operating system, is the heart of Ford Work Solutions.¹ Use the wireless keyboard to create spreadsheets and other documents, download files from the web via the Sprint® Mobile Broadband Network² – even print them when you add the available wireless printer. Full-function hands-free calling and turn-by-turn navigation from Garmin® is also included. Your office has truly gone mobile.

CABLE LOCK (A) It's a sure way to wreck a thief's day. This rugged, retractable, 10-ft. vinyl-coated, braided-steel cable spools out of a case mounted right in your cargo box. Snake it through tool handles and equipment frames to secure them in the box. Clip the heavy-duty locking shackle to any cargo box tie-down or back onto the cable itself. With the optional Ford Work Solutions™ Cable Lock by Master Lock®, your gear is secured, yet easy to access.

TOOL LINK™ (B) Ford Work Solutions available Tool Link,³ developed with DeWALT®, uses Radio Frequency Identification (RFID) technology to track your tools. Use it to check the truck before you leave for a job, making sure you have what you need, then check again at the end of the workday to see that all your gear is on board. It can save you time, frustration and money – the perfect workmate.

CREW CHIEF™ Put available Crew Chief telematics devices on your fleet trucks, and you can track 'em, 24/7. Just pull up the website using the Ford Work Solutions in-dash computer in your truck, or any computer with web access. Crew Chief, offered by Microlise,⁴ shows which truck is closest to the job you need done. It can also provide information that's vital to the life of your trucks and your profits. Easy-to-use analysis tools⁴ can help you keep your fleet in shape, fuel efficient and green.

¹Ford Work Solutions include Ford Licensed Accessories. See dealer for limited warranty details. To avoid distractions, some functions are disabled while vehicle is in motion. ²Sprint subscription and 1-year agreement required. ³Tool Link system cannot read tagged items stored in metal tool boxes. ⁴Service fee required.

LIFE IS EASIER **WITHOUT THE HUMPH.**

IT'S THE **ONLY** COMPLETELY FLAT LOADFLOOR.



F-150 FX4 SuperCrew in Black with Sport Leather-Trimmed Seats, FX4 Luxury Package and other available equipment

Eliminating the center "hump" is just one of the many things done right inside F-150. It's got **"ACTIVE COMFORT" SEATS** that are contoured to comfortably support you, even on the longest trips. Reclined rear seatbacks let your pals enjoy a more relaxed, natural seating position. And they've made this generation the **QUIETEST F-150 YET**. There's so little wind, road and mechanical noise, you might forget you're in a truck. But before you do, take a moment to gaze into that wide-open space over there and imagine what you could do with SuperCrew's 57.6 CU. FT. of interior cargo room and that amazingly flat loadfloor.

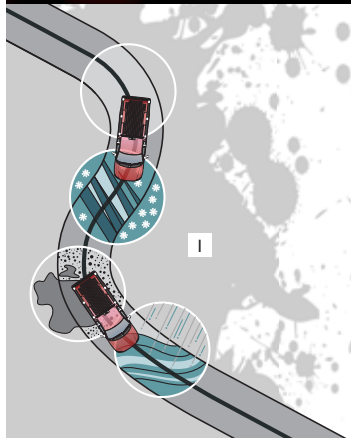
ONE-TOUCH 60/40 SPLIT REAR SEAT (A) on SuperCrew has mechanically assisted bottoms that easily and securely fold up, so you can access the flat loadfloor.

LEG ROOM TO SPARE (B) in this generation of SuperCrew. It's stretched 6" for extra rear-seat comfort. SuperCab is super roomy in back too.

BIG CENTER CONSOLE (C) holds up to 2 laptops. You can also turn it into a mobile file cabinet with the built-in hanging file rails. Locks securely with your ignition key.



SERIOUSLY, IT DOESN'T GET ANY BETTER THAN
 AMERICA'S **SAFEST** FULL-SIZE PICKUP.



It's a fact. F-150 is the only full-size pickup truck in America to earn **5-STAR RATINGS** from the National Highway Traffic Safety Administration (NHTSA) in both frontal- and side-impact crash tests, **AND** be named a **"TOP SAFETY PICK"** by the Insurance Institute for Highway Safety (IIHS). It is America's Safest Full-Size Pickup.¹ New for 2010, the available **MyKey™** owner controls feature lets you program an ignition key with specific parameters to help **ENCOURAGE SMART DRIVING HABITS**, such as buckling up and traveling at appropriate speeds. It's perfect for members of your work crew or teenagers learning the rules of the road.

HYDROFORMED FRONT STRUCTURES (A) are designed to help direct impact forces up and over the passenger cabin.

HIGH-STRENGTH STEEL ROOF BOWS (B) are large and wide to help stiffen the cab structure.

ULTRA-HIGH-STRENGTH STEEL ROOF RAILS (C) start at the base of the A-pillars and are hydroformed to run up and over the doors in a single piece. Hydroforming increases the strength of the steel by 20%.

HIGH-STRENGTH STEEL REAR ROOF STRUCTURE (D) is fully boxed for increased strength.

HEAD RESTRAINTS (E) help provide head and neck protection in certain types of collisions.

SPECIALLY DESIGNED SEATS (F) help properly position passengers for safety belt and airbag effectiveness.

PASSENGER SAFETY CAGE (G) (shown in red) was re-engineered and is manufactured with ultra-high-strength and high-strength steels to help create a structure that is 75% stronger, yet only 7% heavier than that of the previous generation F-150.

STAMPED-STEEL FRONT HORNS (H) are engineered to help manage crash forces.

ADVANCETRAC® WITH RSC® (ROLL STABILITY CONTROL™) (I) This system, another F-150 standard, is the only automotive electronic stability control system that can measure roll rate 100 times per second. Working with the Anti-lock Brake System (ABS), traction control and yaw control, it automatically determines when and how to apply the brakes and modify engine power to help keep all 4 wheels firmly planted.² It really proves its worth when you have to make an emergency maneuver, drive on slippery terrain or just travel on uneven surfaces.

SAFETY CANOPY® SYSTEM (J) This standard system offers protection in certain side-impact collisions or rollover events. The side-curtain airbags with roll-fold technology can slide between the window glass and an occupant's head, even if the person is leaning toward the glass. The front-seat side "K" bags (in yellow) help dissipate crash forces to help enhance protection of the chest in certain side-impact events.

BORON STEEL-REINFORCED B-PILLARS (SuperCrew only, not shown) use a spine formed from steel that is hot stamped to achieve a yield strength that is 3 times stronger for enhanced side-impact protection.

¹Based on both NHTSA 5-Star crash test ratings and IIHS Top Safety Pick. Star ratings are part of the U.S. Department of Transportation's Safercar.gov program (www.safercar.gov). ²Remember that even advanced technology cannot overcome the laws of physics. It's always possible to lose control of a vehicle due to inappropriate driver input for the conditions. For more information on Ford vehicle stability systems, visit fordvehicles.com.

F-150 SVT RAPTOR

BAJA-TESTED. STREET-READY.



F-150 SVT Raptor in Molten Orange Tri-Coat with Exterior Graphics Package and other available equipment

Closed course. Professional driver. Obey all laws. Respect the environment. Know your vehicle, the course and the required equipment before high-speed off-roading.

DNA OF A FACTORY PRERUNNER — BUILT FORD TOUGH. And proven in one of the world's toughest off-road races. Ford Racing and the Ford Special Vehicle Team (SVT) teamed up to enter their production vehicle-based F-150 SVT RAPTOR R race truck in the 41st Tecate SCORE **BAJA 1000**. The RAPTOR R finished the grueling 631-mile course in 25:28:10 — a podium finish — clear evidence of its extreme off-road prowess. We're sure the Baja-bred 2010 F-150 SVT RAPTOR will perform beyond your wildest dreams.

- **MECHANICAL:** Standard 5.4L 3-valve V8 engine; optional 6.2L 2-valve V8 engine with approximately 400 hp and 400 lb.-ft. of torque¹; 4x4 Electronic Shift-On-the-Fly (ESOF); unique cast-aluminum SVT front control arms; triple-bypass FOX Racing Shox (A) — the only internal-bypass shocks available on a production truck² — help control 11.2" of front suspension travel; unique rear springs help deliver 12.1" of rear suspension travel; massive front skid plate; 4.10 rear-axle ratio and electronic-locking rear differential; hill descent control and off-road mode switches on center console (B)
- **EXTERIOR:** SuperCab; 7" wider overall than standard F-150; brick-wall grille; unique front fenders, front bumper, box outer panels and hood with functional air extractor; Ford SVT-tuned BFGoodrich® 35" All-Terrain T/A KO (315/70R17) tires; 17" cast-aluminum wheels
- **INTERIOR:** Unique cloth/leather-trimmed front bucket seats with power driver seat; unique leather-wrapped steering wheel with center mark and thumb pads; center console houses auxiliary switches for your additional lighting and accessories
- **OPTIONAL PACKAGES:** Interior Color Accent Package (C); Exterior Graphics Package; RAPTOR Luxury Package



WE RACE, YOU WIN. Inspired by decades of Built Ford Tough desert race wins, Ford Racing offers exclusive performance equipment designed to take your F-150 SVT RAPTOR to the next level:

- Tubular Bumpers
- Skid Plates
- Wheels
- Auxiliary Lighting
- Gears
- And More

For complete details and availability, ask your Ford Dealer or visit FORDRACINGPARTS.COM/RAPTOR.

¹Projected rating, coming Winter 2010. ²Class is Full-Size Pickups under 8500 lbs. GVWR.



A



B



C

FORD **HARLEY-DAVIDSON™** F-150
4 DOORS. UNLIMITED ATTITUDE.



Ford Harley-Davidson™ F-150 SuperCrew in Lava with available equipment

A NEW WAY TO RIDE. Ford and Harley-Davidson are teaming up again to bring you their latest legendary road warrior. The limited-edition 2010 Ford **Harley-Davidson™** F-150 builds on the mighty F-150 LARIAT SuperCrew with the 5.4L 3-valve V8 Flex Fuel engine, 145" wheelbase and 5.5' box with 4x2 or optional All-Wheel Drive (AWD).

■ **MECHANICAL:** 5.4L 3-valve V8 FFV engine; standard 4x2, optional AWD; sport-tuned shock absorbers; 3.73 limited-slip rear axle

■ **EXTERIOR:** SuperCrew; Exclusive Lava Metallic (shown) or Tuxedo Black Metallic; "Ford Harley-Davidson F-150" badges; chrome billet-style grille; dynamic bodyside graphics with HARLEY-DAVIDSON dimensional letters; HARLEY-DAVIDSON Bar & Shield logo windshield gradient; Blacked-out headlamps and taillamps; stylized power-deployable running boards; chrome-steel cargo box tie-down hooks; chrome twin-tip exhaust; Rear View Camera; Reverse Sensing System; rubber bed mat with HARLEY-DAVIDSON Bar & Shield logo; 22" polished forged-aluminum wheels with Lava-painted accents and HARLEY-DAVIDSON Bar & Shield logo

■ **INTERIOR:** HARLEY-DAVIDSON Bar & Shield logo on ignition keys; new MyKey™; Lava and Black leather-wrapped steering wheel with high-gloss Black accents (A); engine-turned appearance, Lava accents and HARLEY-DAVIDSON lettering on gauges; limited-edition cloisonné serialization plate with HARLEY-DAVIDSON Bar & Shield logo badge on front center console lid (B); Lava and Black leather-trimmed seating (C) with chrome cloisonné HARLEY-DAVIDSON Bar & Shield logo seat medallions; 10-way power, heated/cooled front bucket seats; heated 60/40 split one-touch fold-up rear seat with folding armrest; HARLEY-DAVIDSON lettering on scuff plates; Ambient Lighting; power-adjustable performance pedals; Sony® 6-disc in-dash CD changer; optional Navigation System



A



B



C

F-150 PLATINUM

BEST OF THE BEST.



F-150 PLATINUM SuperCrew 4x4 in Ingot Silver with available equipment

In keeping with the name, **PLATINUM** is filled with all the latest technology and finished in a contemporary style that's beyond compare. It's an exceptional level of distinction reserved exclusively for this F-150.

FIRST-CLASS. That's PLATINUM. From its intricate satin-finish grille to its bright bodyside accents and satin-finish tailgate panel, PLATINUM exudes a calm, cool and collected style. Inside, the luxurious leather-trimmed seating includes 10-way power-adjustable front bucket seats that are heated and cooled for year-round comfort. Unique tuxedo stripe detailing on the seats combines with brushed-aluminum-finish accents on the center stack and floor console to create an interior environment like no other. On the

leather-wrapped steering wheel, you'll find real wood in addition to the convenience of a power tilt column. Changing the mood inside PLATINUM is easy thanks to its standard **Ambient Lighting** with your choice of 7 colors. A special laminated windshield and additional sound insulation in the firewall help quiet road and wind noise to near silence, while the sophisticated rain-sensing windshield wipers automatically react to exterior moisture to help keep your view of what's to come nice and clear. Simply open a door, and the **power-deployable running board** extends, providing easy entry and exit for everyone. Clearly, life in the F-150 PLATINUM is a step above.

2010
F-150 **BUILT TOUGH**

F-150 KING RANCH®

NOW WE'RE TALKIN' TEXAS TOUGH.



F-150 KING RANCH® in Camel with Chaparral Leather Trim and available equipment

This noble steed's bloodlines run deep into the heart of Texas, where the historic KING RANCH® continues to operate in the resilient and hard-working spirit of its founder, the riverboat captain turned rancher, Captain Richard King. A perfect match for F-150.

THE FAMED "RUNNING W" BRAND marks the fact that this F-150 is crafted with exceptional materials, proudly displaying its Western spirit inside and out. Perhaps its most prominent feature, the Chaparral leather-trimmed seating, includes 10-way power, heated and cooled front bucket seats, plus a heated rear seat. The steering wheel and the flow-through center console lid are both trimmed with matching Chaparral leather. For your entertainment, there's a Sony® 6-disc in-dash CD changer. The Reverse Sensing System sounds an alert when it detects objects behind the truck. Those who tow will really appreciate the Rear View Camera that lets you see exactly what's happening in back with the help of a tiny tailgate-mounted camera. It's great for trailer hookups. Power-folding, heated, memory sideview mirrors feature turn signals and approach lamps. Distinctive exterior touches include Pueblo Gold accents and exclusive KING RANCH® badging. The optional 20" wheels with Jewel Gold painted accents enhance its powerful presence wherever you may roam.



F-150 KING RANCH® SuperCrew 4x4 in Oxford White/Pueblo Gold Two-Tone with available equipment

F-150 LARIAT

CAPABILITY. CLASS. CHROME. IT'S ALL HERE.



F-150 LARIAT SuperCrew 4x4 in Camel Leather Trim with Optional Front Bucket Seats and other available equipment

F-150 LARIAT SuperCrew 4x4 in Red Candy with LARIAT Chrome Package and other available equipment

This truck's ready to work with best-in-class towing and payload thanks to a mighty 5.4L V8. And it knows how to treat you right with leather trim, 10-way power, heated front seats and Ford SYNC® – all standard. It's the perfect reward for your job well done.

LARIAT IS MORE THAN A TRUCK, IT'S AN EXPERIENCE. From the traditional appeal of leather-trimmed seating and woodgrain trim to the cutting-edge Ford SYNC voice-activated communications and entertainment system, the list of standard features goes on and on. Find the perfect position for the 10-way power driver seat, power-adjustable pedals and power, heated sideview mirrors, then lock them all in place with the memory function. Use the convenient steering wheel-mounted controls to adjust the audio system to your liking while you warm up on the heated front seats. The new power-sliding rear privacy window's defrost feature helps minimize your time out in the cold.

A substantial chrome 2-bar grille and 18" bright-aluminum wheels help give LARIAT its unique style. The exterior is available in your choice of a monotone paint scheme with body-color wheel-lip moldings or optional two-tone paint with Pueblo Gold bumpers, wheel-lip moldings and lower accent color. The optional LARIAT Chrome Package brightens up the exterior, and the optional LARIAT Plus Package gives you more convenience items inside. When you're ready to discover what tough luxury is all about, climb into F-150 LARIAT.



FX4 DOWN & DIRTY.

F-150 FX4 SuperCrew in Black with Sport Leather-Trimmed Seats and other available equipment

FX2 SPORT STYLE.

F-150 FX4 SuperCab in Blue Flame with FX4 Luxury Package and other available equipment

F-150 FX2 SuperCrew in Red Candy with 20" 6-Spoke Premium Painted-Aluminum Wheels and other available equipment

MUD BOGS. ROCK PILES. TIGHT TWO-TRACKS. Powered by the mighty 5.4L 3-valve V8 FFV engine and 6-speed automatic transmission, every **FX4** comes with 4x4 **Electronic Shift-On-the-Fly (ESOF)**. The 3.73 electronic-locking rear differential utilizes a **heavy-duty dog-clutch gear set** to take FX4 above and beyond where other trucks fear to tread. Steel skid plates help protect the front crossmember and transfer case, while the fuel tank is shielded by its own composite skid plate. Setting off its rugged style: a black 3-bar grille with body-color surround, and Sterling Grey wheel-lip moldings. The **standard Trailer Tow Package** expands your recreational options. Punch in your secret digits on the **SecuriCode™** keyless-entry keypad to get inside. Once there, you'll find supportive front bucket seats trimmed in Black sport cloth. There's a fixed-glass rear-window defroster for those early-morning trail rides, and **SIRIUS Satellite Radio** delivers over 130 channels from coast-to-coast to keep you entertained along the way. The optional **FX4 Luxury Package** gives you leather trim and so much more. FX4 has the power, equipment and aggressive off-road style to take you anywhere.

A HOT NEW TRUCK FOR 4x2 FANS. Sharp accents give **FX2** its distinctly energetic feel while the standard 4.6L 3-valve V8 engine gives it an enthusiastic **292 hp and 320 lb.-ft. of torque**. Up front, a Sterling Grey billet-style grille and accent-color lower front valance set off its streamlined, monochromatic exterior. On the sides, substantial 6" angular running boards and unique 18" **machined-aluminum wheels** accent the body-color bumpers and wheel-lip moldings. You'll also notice the **accent-color treatment** on the headlamps and taillamps. The finishing touch: a chrome exhaust tip. Slip inside to experience the dramatic Black interior. Sport cloth seating includes front bucket seats with a flow-through center console. The **Black leather-wrapped steering wheel** and optional power-adjustable performance pedals will have you ready to run. For even more street cred, step up to the optional 20" premium painted-aluminum wheels. The new FX2 is Built Ford Tough® and destined to stand out from the crowd. Available Fall 2009.

F-150 **XLT**
 THIS ONE'S THE **GO-TO GUY.**



F-150 XLT SuperCab 4x2 in Oxford White/Ingot Silver Two-Tone with XLT Chrome Package, 20" Chrome-Clad Aluminum Wheels and other available equipment

F-150 XLT SuperCrew 4x4 in Camel with available equipment

Hardworking. Practical. Built Ford Tough® Whether you need a Regular Cab, SuperCab or SuperCrew, **XLT's** got all the right answers — plus, classic good looks and a can-do attitude.

EVERYDAY VERSATILITY AND HARDWORKING VALUE top the list of XLT's many virtues. The chiseled exterior starts front and center at the chrome 3-bar grille with chrome surround, which is complemented by chrome bumpers and sturdy 17" machined-aluminum wheels. Use the remote keyless-entry system to activate the standard power door locks, and you're in. Power windows are also standard. Premium cloth seats welcome you, along with color-coordinated carpet and floor mats, plus cruise control to help you out on longer drives. The **autolamp** feature automatically activates your headlamps

when appropriate based on ambient light conditions — that's one less item on your to-do list. And detail-oriented drivers will appreciate the standard **information display** with its compass and outside temperature. For power-adjustable pedals, heated sideview mirrors, a 6-way power driver seat (on SuperCab and SuperCrew) and more, there's the optional **XLT Convenience Package**. An eye-catching new chrome billet-style grille, 18" chrome-clad aluminum wheels and many other chrome features can be found in the optional **XLT Chrome Package**. Those who haul and tow heavy loads can equip XLT with the available 320-hp¹ 5.4L 3-valve V8 FFV, and the available Heavy-Duty Payload Package and Max. Trailer Tow Package for best-in-class capability.

¹320 hp and 390 lb.-ft. torque ratings require E85 fuel.

2010
F-150 **BUILT TOUGH**



STX
STEALS
THE SCENE.

F-150 STX SuperCab in Medium Stone

F-150 STX SuperCab 4x2 in Ingot Silver with STX Décor Package, STX Plus Package and other available equipment

THIS IS TOUGH THAT TURNS HEADS with its sleek, monochromatic style. The black 3-bar grille stands out from its body-color surround. Unique 17" machined-aluminum wheels and outline-white-letter tires provide solid footing. "Active Comfort" cloth seats with driver lumbar adjustment make cruising easy. You can even listen to your own playlists thanks to the standard auxiliary audio input jack on the AM/FM stereo/single-CD player. The new MyKey™ owner controls feature helps encourage smart driving habits with programmable ignition keys. To add cruise control and fog lamps, choose the optional STX Plus Package. For 18" aluminum wheels and tubular running boards, go with the optional STX Décor Package. The optional Power Equipment Group gives you autolamp, remote-keyless illuminated entry, and power door locks, windows and sideview mirrors. Put it all together with **STX**.



XL
GETS
IT DONE.

F-150 XL Regular Cab in Medium Stone with Optional Cloth Seats

F-150 XL Regular Cab 4x4 in Tuxedo Black with available equipment

IT'S ALL THE BEST OF F-150. The strongest frame, sturdy suspension and new, bigger brakes are ready to work. The functional interior is equipped with durable vinyl floor covering and a comfortable vinyl-trimmed 40/20/40 split front seat. For cloth seating and chrome bumpers, there's the optional XL Décor Group. Standard power comes from the proven 4.6L 2-valve V8 engine mated to a 4-speed automatic transmission. AdvanceTrac® with RSC® (Roll Stability Control™), Trailer Sway Control, and a smooth, quiet ride are also standard. To help enhance protection in certain side-impact events, front-seat side "K" bags and side-curtain airbags with roll-fold technology are standard equipment on every F-150. XL travels on tough 17" grey styled-steel wheels paired with all-season BSW tires. When properly equipped with the optional Heavy-Duty Payload Package and the Max. Trailer Tow Package, it can help you haul up to 3,030 lbs., or tow all the way up to 11,300 lbs. That's best-in-class capability — on top of legendary F-150 durability. You can't go wrong.



XL

AVAILABILITY

CAB:
Regular Cab ■ SuperCab ■ SuperCrew

ENGINE:
4.6L 2-valve V8 ■ 4.6L 3-valve V8 ■ 5.4L 3-valve V8 FFV

DRIVETRAIN:
4x2 ■ 4x4

STANDARD EQUIPMENT

- MECHANICAL: Tire Pressure Monitoring System (excludes spare); Easy Fuel™ capless fuel filler
- SAFETY/SECURITY: AdvanceTrac® with RSC® (Roll Stability Control™); Personal Safety System™; Safety Canopy® System; SOS Post-Crash Alert System™; Trailer Sway Control
- EXTERIOR: Argent-painted front and rear step bumpers; black bar-style grille with black surround; black front bumper upper fascia; black manual sideview mirrors (Regular Cab and SuperCab); black power sideview mirrors (SuperCrew); 17" grey styled-steel wheels
- INTERIOR: Vinyl 40/20/40 split front seats; vinyl 60/40 split flip-up rear seat (SuperCab and SuperCrew); solar-tinted glass with fixed rear window; air conditioning; AM/FM stereo with clock; visors with driver-side map strap and passenger-side mirror; urethane steering wheel; tachometer; vinyl floor covering; display center; manual windows (Regular Cab and SuperCab); power windows and door locks (SuperCrew); tilt steering wheel



STX

AVAILABILITY

CAB:
Regular Cab ■ SuperCab

ENGINE:
4.6L 2-valve V8 ■ 4.6L 3-valve V8

DRIVETRAIN:
4x2 ■ 4x4

STANDARD EQUIPMENT

Includes all XL features, plus:

- EXTERIOR: STX decals; body-color front and rear step bumpers, grille surround and front bumper upper fascia; 17" machined-aluminum wheels
- INTERIOR: Cloth 40/20/40 split front seats with driver manual lumbar; cloth 60/40 split flip-up rear seat (SuperCab); AM/FM stereo/single-CD player; auxiliary audio input jack; rear cupholders (SuperCab); MyKey™ owner controls feature



XLT

AVAILABILITY

CAB:
Regular Cab ■ SuperCab ■ SuperCrew

ENGINE:
4.6L 2-valve V8 ■ 4.6L 3-valve V8 ■ 5.4L 3-valve V8 FFV

DRIVETRAIN:
4x2 ■ 4x4

STANDARD EQUIPMENT

Includes all STX features, plus:

- EXTERIOR: Chrome front and rear step bumpers; chrome bar-style grille with chrome surround; remote keyless-entry system; power sideview mirrors; 17" machined-aluminum wheels with painted accents
- INTERIOR: Premium cloth 40/20/40 split front seats; premium cloth 60/40 split flip-up rear seat (SuperCab and SuperCrew); autolamp; power accessory delay; color-coordinated carpet and floor mats; cruise control; visors with covered mirrors; power windows (including 2nd-row on SuperCab and SuperCrew); power door locks; tripminder; outside temperature and compass display; rear cupholders (SuperCab and SuperCrew); fixed rear privacy window



FX2

AVAILABILITY

CAB:
SuperCab ■ SuperCrew

ENGINE:
4.6L 3-valve V8 ■ 5.4L 3-valve V8 FFV

DRIVETRAIN:
4x2

STANDARD EQUIPMENT

Includes all XLT features, plus:

- EXTERIOR: FX2 Sport decals; body-color front and rear step bumpers; Sterling Grey billet-style grille with body-color surround; fog lamps; body-color wheel-lip moldings; SecuriCode™ keyless-entry keypad; accent-color headlamps and taillamps; chrome exhaust tip; accent-color 6" angular running boards; body-color door handles; 18" machined-aluminum wheels with painted accents
- INTERIOR: Sport cloth front bucket seats with flow-through console and floor shifter; driver and right-front-passenger manual lumbar; 6-way power driver seat; Black leather-wrapped steering wheel; FX logo carpeted floor mats



FX4

AVAILABILITY

CAB:
SuperCab ■ SuperCrew

ENGINE:
5.4L 3-valve V8 FFV

DRIVETRAIN:
4x4

STANDARD EQUIPMENT

Includes all XLT features, plus:

- MECHANICAL: Electronic Shift-On-the-Fly (ESOF); electronic-locking rear axle; skid plates — 2 steel (front crossmember and transfer case), 1 composite (fuel tank); Trailer Tow Package
- EXTERIOR: FX4 OFF-ROAD decals; body-color front and rear step bumpers; black bar-style grille with body-color surround; fog lamps; Sterling Grey wheel-lip moldings; SecuriCode keyless-entry keypad; 18" machined cast-aluminum wheels
- INTERIOR: Sport cloth front bucket seats with flow-through console and floor shifter; driver and right-front-passenger manual lumbar; 6-way power driver seat; SIRIUS Satellite Radio; Black leather-wrapped steering wheel; Black rubber off-road floor mats; rear-window defroster

Vehicles shown with optional equipment.



2010
F-150 **BUILT TOUGH**



LARIAT

AVAILABILITY

CAB:
SuperCab ■ SuperCrew

ENGINE:
5.4L 3-valve V8 FFV

DRIVETRAIN:
4x2 ■ 4x4

STANDARD EQUIPMENT

Includes all XLT features, plus:

- EXTERIOR: Chrome front/rear step bumpers and body-color wheel-lip moldings (with monotone paint); Pueblo Gold front/rear step bumpers and wheel-lip moldings (with two-tone paint); chrome 2-bar grille with Silver-painted mesh insert; power, heated sideview mirrors with memory, body-color caps, integrated turn-signal indicators and auto-dimming driver-side feature; body-color door handles; 18" bright-aluminum wheels
- INTERIOR: Leather-trimmed seats; 10-way power, heated front seats; memory driver seat; visors with lighted, covered vanity mirrors; Dual-zone Electronic Automatic Temperature Control; SIRIUS Satellite Radio; Ford SYNC®; color-coordinated, carpeted floor mats; message center; color-coordinated, leather-wrapped steering wheel with secondary audio controls; auto-dimming rearview mirror; power-adjustable pedals with memory; woodgrain-style trim; power-sliding rear privacy window with defrost



KING RANCH®

AVAILABILITY

CAB:
SuperCrew

ENGINE:
5.4L 3-valve V8 FFV

DRIVETRAIN:
4x2 ■ 4x4

STANDARD EQUIPMENT

Includes all LARIAT features, plus:

- EXTERIOR: KING RANCH® badges; Pueblo Gold front/rear bumpers and wheel-lip moldings; 2-bar grille with chrome surround and color-coordinated mesh insert; two-tone paint with Pueblo Gold lower accent color; power-fold, heated sideview mirrors with memory, chrome caps, integrated turn-signal indicators, security approach lamps and auto-dimming driver-side feature; color-coordinated box rail/tailgate moldings and platform running boards; Reverse Sensing System; Rear View Camera; 18" aluminum wheels with KING RANCH® logo
- INTERIOR: Chaparral leather-trimmed, 10-way power, heated and cooled front bucket seats; heated Chaparral leather-trimmed 60/40 split one-touch fold-up rear seat with folding armrest; Chaparral leather-wrapped steering wheel; Sony® AM/FM stereo/6-disc in-dash CD changer with MP3 capability and speed-compensated volume control; Universal Garage Door Opener; KING RANCH® woodgrain-style trim; front flow-through console with Chaparral leather-trimmed lid; unique KING RANCH® floor mats



PLATINUM

AVAILABILITY

CAB:
SuperCrew

ENGINE:
5.4L 3-valve V8 FFV

DRIVETRAIN:
4x2 ■ 4x4

STANDARD EQUIPMENT

Includes all LARIAT features, plus:

- EXTERIOR: PLATINUM badges; body-color front/rear bumpers and wheel-lip moldings; Satin-finish grille surround with chrome mesh insert; chrome front tow hooks (4x4); chrome door handles; power-deployable running boards; power-fold, heated sideview mirrors with memory, chrome caps, integrated turn-signal indicators, security approach lamps and auto-dimming driver-side feature; bright bodyside accent moldings; high-gloss Black B-pillar appliqué; chrome exhaust tip; satin-finish tailgate appliqué; rain-sensing windshield wipers; 20" polished-aluminum wheels
- INTERIOR: Unique leather-trimmed, 10-way power, heated and cooled front bucket seats; heated unique leather-trimmed 60/40 split one-touch fold-up rear seat with folding armrest; unique leather-wrapped steering wheel with real wood insert, power tilt column and memory; unique brushed-aluminum appliqué on center panel and console; Sony AM/FM stereo/6-disc in-dash CD changer with MP3 capability and speed-compensated volume control; visors with lighted, covered vanity mirrors and Universal Garage Door Opener; front flow-through console with unique leather-trimmed lid; unique scuff plates and instrument cluster face; Reverse Sensing System; Rear View Camera; Ambient Lighting



SVT RAPTOR

See F-150 SVT RAPTOR feature page for details.

AVAILABILITY

CAB: SuperCab
ENGINE: 5.4L 3-valve V8 FFV ■ 6.2L 2-valve V8¹
DRIVETRAIN: 4x4

¹Available Winter 2010.



FORD HARLEY-DAVIDSON™ F-150

See FORD HARLEY-DAVIDSON F-150 feature page for details.

AVAILABILITY

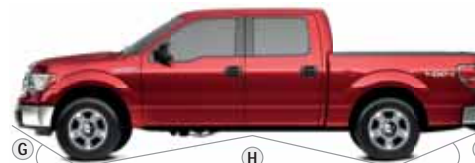
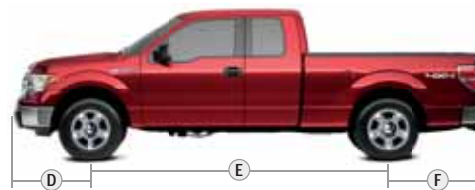
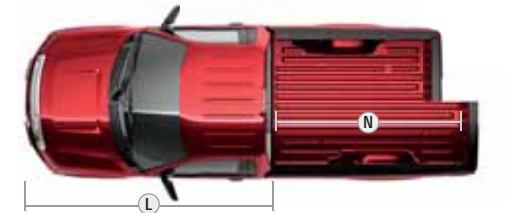
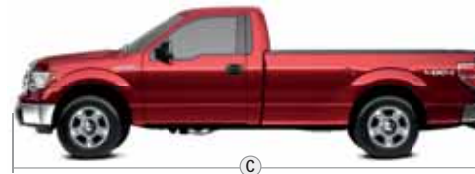
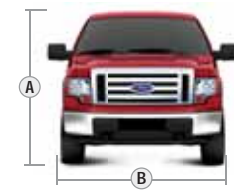
CAB: SuperCrew
ENGINE: 5.4L 3-valve V8 FFV
DRIVETRAIN: 4x2 ■ AWD

Vehicles shown with optional equipment.

DIMENSIONS

	REGULAR CAB 4x2/4x4	SUPERCAB 4x2/4x4	SUPERCREW 4x2/4x4	SVT RAPTOR SUPERCAB 4x4
EXTERIOR				
A. Overall height				
5.5' box	—	—	74.3"/76.2"	78.4"
6.5' box	74.6"/76.0"	71.5"/75.9"	74.3"/76.4"	—
8' box	76.2"/75.8"	75.9"/76.7"	—	—
B. Overall width				
excluding mirrors	78.9"	78.9"	78.9"	86.3"
including mirrors	97.0"	97.0"	97.0"	97.0"
mirrors folded	83.6"	83.6"	83.6"	83.6"
C. Overall length				
5.5' box	—	—	231.7"	220.9"
6.5' box	213.1"	231.7"	243.7"	—
8' box	231.7"	250.3"	—	—
D. Overhang — Front	38.5"	38.5"	38.5"	38.4"
E. Wheelbase				
5.5' box	—	—	144.4"	133.3"
6.5' box	125.8"	144.5"	156.6"	—
8' box	144.5"	163.2"	—	—
F. Overhang — Rear				
5.5' box	—	—	48.8"	49.3"
6.5' box	48.8"	48.8"	48.7"	—
8' box	48.6"	48.6"	—	—
G. Angle of approach				
5.5' box	—	—	21.2°/25.0°	30.0°
6.5' box	22.2°/24.3°	21.1°/23.7°	22.4°/25.5°	—
8' box	24.2°/23.4°	25.5°/25.2°	—	—
H. Ramp breakover angle				
5.5' box	—	—	15.2°/18.6°	20.8°
6.5' box	17.7°/19.9°	15.7°/18.0°	14.5°/18.6°	—
8' box	19.3°/18.3°	17.3°/18.7°	—	—
I. Angle of departure				
5.5' box	—	—	17.7°/20.4°	22.7°
6.5' box	18.8°/21.0°	18.8°/20.7°	18.1°/20.7°	—
8' box	21.9°/21.6°	21.1°/22.1°	—	—
J. Ground clearance				
5.5' box	—	—	7.8"/9.0"	11.2"
6.5' box	8.6"/8.8"	8.2"/8.7"	8.3"/9.9"	—
8' box	9.9"/8.8"	9.4"/10.0"	—	—
K. Loadfloor height				
5.5' box	—	—	32.2"/34.2"	36.4"
6.5' box	33.0"/34.8"	33.2"/34.6"	32.4"/34.6"	—
8' box	35.7"/35.4"	34.9"/35.7"	—	—
L. Cab length	126.4"	145.0"	156.7"	145.2"
INTERIOR				
1st Row				
Head room	41.0"	41.0"	41.0"	41.0"
Shoulder room	66.6"	66.6"	65.9"	65.9"
Hip room	60.5"	60.5"	60.5"	60.5"
Leg room	41.4"	41.4"	41.4"	41.4"
2nd Row				
Head room	—	39.7"	40.3"	39.7"
Shoulder room	—	66.8"	65.6"	65.7"
Hip room	—	66.6"	64.6"	65.4"
Leg room	—	33.4"	43.5"	33.4"

CARGO AREA	5.5' BOX	6.5' BOX	8' BOX
Volume (cu. ft.)	55.5	65.5	81.2
M. Inside height	22.4"	22.4"	22.4"
N. Length at floor	67.0"	78.8"	97.4"
O. Width at wheelhouse	50.0"	50.0"	50.0"
P. Maximum width at floor	65.2"	65.2"	65.2"



STANDARD FEATURES

MECHANICAL

90,000-mile tune-up interval¹
 Easy Fuel™ capless fuel filler
 Electronic Brakeforce Distribution (EBD)
 Fail-safe engine cooling system
 Gas-pressurized twin-tube shock absorbers
 Hood-open assist mechanisms
 Lightweight aluminum hood
 Maintenance-free 72-amp-hr, 750-CCA battery with battery saver
 Power 4-wheel vented-disc brakes with Anti-lock Brake System (ABS)
 Power rack-and-pinion steering
 Spare tire with underframe winch with safety catch
 Stabilizer bar – Front
 Stainless steel exhaust system (major components)
 Suspension – Front: long-spindle, double-wishbone coil-over-shock;
 rear: leaf springs
 Tire Pressure Monitoring System (excludes spare)
 Trailer tow – 4-pin connector

SAFETY/SECURITY

Personal Safety System™ for driver and right-front passenger includes dual-stage front airbags²; safety belt pretensioners, safety belt energy-management retractors, safety belt usage sensors, driver-seat position sensor, crash severity sensor, restraint control module and Front-Passenger Sensing System³
 Safety Canopy® System with side-curtain airbags² for all rows and rollover sensor
 Front-seat side airbags²
 AdvanceTrac® with RSC® (Roll Stability Control™)
 Alert chimes – Headlamps-on, key-in-ignition and safety belt
 Belt-Minder® safety belt reminder – Driver and right-front-passenger
 Brake/shift interlock
 Fuel pump inertia shutoff switch
 LATCH – Lower anchors and tether anchors for child-safety seats
 Safety belts – 3-point for all front-outboard-seating positions, all rear seat positions and Regular Cab front-center position
 Safety belt – 2-point front-center (SuperCab and SuperCrew)
 SecurILock® passive anti-theft ignition system
 Side-intrusion door beams
 SOS Post-Crash Alert System™⁴
 Trailer Sway Control

¹Under normal driving conditions with routine fluid and filter changes.

²Always wear your safety belt and, in SuperCab and SuperCrew models, always secure children in the rear seat.

³Right-front-passenger seat only.

⁴SOS hardware may become damaged or the battery may lose power in a crash, which could prevent operation. Not all crashes will activate an airbag or safety belt pretensioner.

INTERIOR

Air conditioning – Manual
 Assist/grab handle – Right-front-passenger
 Assist/grab handles – Rear outboard positions (SuperCrew)
 Coat hooks – 2
 Cupholders – Front; 2 deployable under center seat (4x2 and ESOF 4x4 only) and 1 in each front-door map pocket
 Display center
 Front dome or map lights
 Front-door map pockets
 Gauges – Tachometer, fuel, voltmeter, oil pressure, engine coolant temperature, speedometer and odometer
 Glove compartment
 Horn – Dual-note
 Power points – Front (all models) and rear (in SuperCab and SuperCrew models)
 Tilt steering wheel

EXTERIOR

Cargo box lamp – Integrated into center high-mounted stop lamp
 Cargo box tie-downs – 4
 Headlamps – Aerodynamic clear-lens dual-beam halogen
 Stake-bed pockets
 Tailgate – Removable with key lock and Tailgate Assist
 Tow hooks – 2 in front (4x4 only)
 Windshield wipers – Intermittent

SVT RAPTOR FEATURES & OPTIONS

See *F-150 SVT RAPTOR feature page for standard equipment*

OPTIONAL EQUIPMENT

6.2L 2-valve V8 with 6-speed automatic overdrive and Tow/Haul Mode (available Winter 2010)
 Integrated Trailer Brake Controller
 Navigation System with Sony® audio (req. RAPTOR Luxury Package)
 Power moonroof
 Rear View Camera
 Stowable bed extender
 Tailgate Step

OPTIONAL PACKAGES

Exterior Graphics Package

Interior Color Accent Package – Includes Orange-accent leather-trimmed front seats and rear vinyl seats, and Orange-accent instrument panel center stack appliqué, door panel inserts and center console

RAPTOR Luxury Package – Includes unique heated front bucket seats with 10-way power; power-adjustable pedals; Dual-zone Electronic Automatic Temperature Control; Sony 6-disc in-dash CD changer; power, heated sideview mirrors with integrated turn-signal indicators and auto-dimming driver-side feature; and memory system for power driver seat, pedals and sideview mirrors

New Vehicle Limited Warranty. We want your Ford F-150 ownership experience to be the best it can be. So under this warranty, your new vehicle comes with 3-year/36,000-mile Bumper-to-Bumper Coverage, 5-year/60,000-mile Powertrain Warranty Coverage, 5-year/50,000-mile Safety Restraint Coverage, and 5-year/unlimited-mile Corrosion (Perforation) Coverage – all with no deductible. Please ask your Ford Dealer for a copy of this limited warranty.

Roadside Assistance. Covers your vehicle for 5 years or 60,000 miles, so you have the security of knowing that help may be only a phone call away should you run out of fuel, lock yourself out of the vehicle, or need towing. Your Ford Dealer can provide complete details on all of these advantages.

Ford Credit. Get the ride you want. Whether you plan to lease or finance, you'll find the choices that are right for you at Ford Credit. Ask your Ford Dealer for details or check us out at fordcredit.com.

Ford Extended Service Plan. For a purchase or lease, the Ford Extended Service Plan (ESP) gives you "Peace-of-Mind" protection designed to cover key vehicle components and protect you from the cost of unexpected repairs. Ask your dealer for a Ford ESP, the only service contract backed exclusively by Ford and honored at all Ford Lincoln Mercury dealerships.

Insurance Services. Get Ford Motor Company quality in your auto insurance. Our program offers industry-leading benefits and competitive rates. Call 1-877-367-3847, or visit us at fordvip.com for a no-obligation quote. Insurance offered by American Road Services Company (in CA, American Road Insurance Agency), a licensed agency and subsidiary of Ford Motor Company.

Comparisons based on 2009 competitive models (Class is Full-Size Pickups under 8500 lbs. GVWR), publicly available information and Ford certification data at time of release. Some features discussed may be optional. Vehicles shown may contain optional equipment. Features shown may be offered only in combination with other options or subject to additional ordering requirements or limitations. Dimensions and capability ratings shown may vary due to optional features and/or production variability. Following release of the PDF, certain changes in standard equipment, options and the like, or product delays may have occurred which would not be included in these pages. Your Ford Dealer is the best source for up-to-date information. Ford Division reserves the right to change product specifications at any time without incurring obligations.

SIRIUS is a registered trademark of SIRIUS XM Radio Inc. Subscriptions governed by SIRIUS Terms and Conditions at sirius.com/serviceterms. Service available in the 48 contiguous states and Washington, D.C.

Microsoft is a registered trademark of Microsoft Corporation.

The Bluetooth word mark is a trademark of the Bluetooth SIG, Inc.

DeWALT is a registered trademark of DeWALT Industrial Tool Company used under license.

Garmin is a registered trademark of Garmin Ltd.

Master Lock is a registered trademark of Master Lock Company LLC.

Microlise Group Limited is a company registered in England and Wales with company number 1670983.

Sprint and the logo are trademarks of Sprint. Sprint Mobile Broadband Network reaches over 249 million people. Coverage not available everywhere. See Sprint.com/coverage for details.

Sony is a registered trademark of Sony Corporation.

Windows is a registered trademark of Microsoft Corporation.

FEATURES & OPTIONS

					XL
					STX
					XLT
					FX4
					LARIAT
					MECHANICAL
●	●	○	–	–	4.6L EFI 2-valve V8 with 4-speed automatic overdrive
●	●	○	–	–	4.6L EFI 3-valve V8 with 6-speed automatic overdrive with Tow/Haul Mode (n/a with 4x2 Regular Cab 126" WB)
●	–	○	●	●	5.4L EFI SOHC 3-valve V8 FFV with electronic 6-speed automatic overdrive with Tow/Haul Mode (n/a with 4x2 Regular Cab 126" WB)
●	●	○	–	●	Axle – Non-limited-slip rear (3.15, 3.31, 3.55 or 3.73 ratio) ¹
○	○	○	–	○	Axle – Limited-slip rear (3.55 or 3.73 ratio) ¹
–	–	–	●	–	Axle – 3.73 electronic-locking rear
●	●	●	–	●	Fuel tank – 26-gallon capacity
●	●	●	●	●	Fuel tank – 36-gallon capacity
					WHEELS & TIRES
●	–	–	–	–	17" grey styled-steel wheels
–	●	–	–	–	17" machined-aluminum wheels
–	–	●	–	–	17" machined-aluminum wheels with painted accents
●	–	●	–	–	17" 7-lug steel wheels (req. Heavy-Duty Payload Package; Regular Cab and SuperCab only)
–	–	–	●	–	18" 7-spoke bright-aluminum wheels
–	–	●	–	●	18" chrome-clad aluminum wheels (incl. with XLT and LARIAT Chrome Packages)
–	●	–	●	–	18" machined cast-aluminum wheels (incl. with STX Décor Package)
–	–	●	–	–	18" machined-aluminum wheels with painted accents (incl. with FX2 Sport Package)
–	–	–	–	●	18" 7-spoke aluminum wheels with Pueblo Gold painted accents (incl. with KING RANCH® Package)
–	–	●	–	●	20" chrome-clad aluminum wheels (req. XLT or LARIAT Chrome Package and 5.4L V8)
–	–	–	○	○	20" 6-spoke machined-aluminum wheels – Includes sport-tuned shocks (n/a with Regular Cab 126" WB or SuperCab 133" WB)
–	–	●	–	–	20" 6-spoke premium painted-aluminum wheels (req. FX2 Sport Package and 5.4L engine)
–	–	–	–	●	20" polished-aluminum wheels (incl. with PLATINUM Package)
–	–	–	–	○	20" premium painted-aluminum wheels (req. KING RANCH® Package)
–	–	–	–	●	22" polished forged-aluminum wheels with painted accents (incl. with Ford Harley-Davidson™ Package)
●	–	●	–	–	P235/70R17 all-season BSW tires (5) – 4x2 (Regular Cab and SuperCab)
●	–	●	–	–	P235/75R17 all-terrain BSW tires (5) – 4x4 (Regular Cab and SuperCab)
●	●	●	–	–	P255/65R17 all-season OWL tires (4) – 4x2 (optional on XL and XLT Regular Cab and SuperCab; standard on SuperCrew)
●	●	●	–	–	P265/70R17 all-terrain OWL tires (4) – 4x4 (optional on XL and XLT Regular Cab and SuperCab; standard on SuperCrew)
●	–	●	–	–	LT245/75R17E all-terrain BSW tires (5) – 4x2/4x4 (req. Heavy-Duty Payload and Max. Trailer Tow Packages; Regular Cab and SuperCab)

					XL
					STX
					XLT
					FX4
					LARIAT
					WHEELS & TIRES (continued)
–	●	○	–	●	P265/60R18 all-season OWL tires (5) – 4x2 (incl. with FX2 Sport, STX Décor and XLT Chrome Packages)
–	●	●	●	●	P275/65R18 all-terrain OWL tires (4) – 4x4 (incl. with STX Décor and XLT Chrome Packages)
–	–	○	○	○	LT275/65R18C all-terrain OWL tires (4) – 4x4 (XLT req. XLT Chrome Package)
–	–	○	–	○	P275/55R20 all-season OWL tires (4) – 4x2 (SuperCab and SuperCrew; XLT req. 5.4L V8 and either XLT Chrome Package or FX2 Sport Package)
–	–	○	○	○	P275/55R20 all-terrain OWL tires (4) – 4x4 (SuperCab and SuperCrew; XLT req. XLT Chrome Package and 5.4L V8)
–	–	–	–	●	P275/45R22 all-season BSW tires (4) – (V-rated; incl. with Ford Harley-Davidson™ Package)
					4x4-ONLY FEATURES
●	●	○	–	–	Mechanical Shift-On-the-Fly (MSOF) transfer case (Regular Cab and SuperCab)
●	●	○	●	●	Electronic Shift-On-the-Fly (ESOF) transfer case (standard on SuperCrew; req. with 4.6L 3-valve and 5.4L 3-valve)
○	–	○	●	○	Skid plates – Steel plates for front crossmember and transfer case; composite plate for fuel tank
					EXTERIOR
○	–	○	–	–	8' box – Regular Cab (145" WB)
●	–	●	–	–	8' box – SuperCab with Heavy-Duty Payload Package (163" WB)
○	○	○	–	–	6.5' box – Regular Cab (126" WB)
○	○	○	○	○	6.5' box – SuperCab (145" WB)
○	–	○	○	○	6.5' box – SuperCrew (157" WB)
○	–	○	○	○	5.5' box – SuperCrew (145" WB)
●	●	●	●	●	Box Side Steps (6.5' or 8' box only)
○	○	○	○	○	Cargo Management System – Includes 2 dual-channel side rails and 4 tie-down cleats (6.5' box)
○	○	○	○	○	Cargo Management pickup box storage bins – 2 (req. Cargo Management System)
○	●	●	●	●	Fog lamps (XL req. XL Décor Group)
○	○	○	○	○	Integrated Trailer Brake Controller (req. Trailer Tow or Max. Trailer Tow Package; XL with XL Décor Group req. fog lamps; STX and XLT req. fog lamps)
–	–	○	○	●	Rear View Camera – Includes camera mounted in tailgate (req. Reverse Sensing System)
●	–	●	●	●	Remote keyless entry with 2 fobs; illuminated entry with panic button (XL SuperCrew only)
–	–	○	●	●	Reverse Sensing System (req. Trailer Tow or Max. Trailer Tow Package)
●	–	●	–	–	Running boards – Black platform (XL SuperCrew; XLT SuperCab and SuperCrew only)
–	●	●	○	○	Running boards – 4" polished stainless steel tubular

					XL
					STX
					XLT
					FX4
					LARIAT
					EXTERIOR (continued)
○	–	–	–	–	Running boards – 4" Black tubular (XL SuperCab and SuperCrew only)
–	●	○	○	○	Running boards – 5" chrome tubular (STX SuperCab only; XLT SuperCab/SuperCrew)
–	–	○	●	●	SecuriCode™ keyless-entry keypad – Driver door-mounted
●	●	–	–	–	Sideview mirrors – Manual (XL Regular Cab and SuperCab only)
●	–	●	●	–	Sideview mirrors – Power (XL SuperCrew only)
–	–	●	●	–	Sideview mirrors – Power, heated with integrated turn-signal indicators and auto-dimming driver-side feature
–	–	–	●	●	Sideview mirrors – Power, heated with memory, integrated turn-signal indicators, chrome caps and auto-dimming driver-side feature (incl. with FX4 Luxury Package)
–	–	–	–	●	Sideview mirrors – Power, heated with memory, integrated turn-signal indicators, chrome caps and auto-dimming driver-side feature (incl. with LARIAT Chrome Package)
–	–	–	–	●	Sideview mirrors – Power-fold, heated with memory, integrated turn-signal indicators, chrome caps, security approach lamps and auto-dimming driver-side feature (req. KING RANCH® or PLATINUM Package)
●	–	–	–	–	Sideview mirrors – Manual glass/telescoping trailer tow (req. Max. Trailer Tow Package; XL Regular Cab and SuperCab only)
●	–	○	○	–	Sideview mirrors – Power, heated glass/manual telescoping trailer tow with integrated turn-signal indicators and security approach lamps (req. Max. Trailer Tow Package; XL req. Power Equipment Group)
–	–	–	○	○	Sideview mirrors – Power, heated glass/manual telescoping trailer tow with memory, integrated turn-signal indicators, body-color caps and security approach lamps (FX4 req. FX4 Luxury Package; req. Max. Trailer Tow Package)
–	–	–	–	○	Sideview mirrors – Power, heated glass/manual telescoping trailer tow with memory, integrated turn-signal indicators, chrome caps and security approach lamps (req. KING RANCH®, PLATINUM or LARIAT Chrome Package; req. Max. Trailer Tow Package)
○	○	○	○	○	Stowable bed extender
○	○	○	○	○	Tailgate Step
–	–	○	–	●	Two-tone paint (incl. with KING RANCH® Package; n/a with PLATINUM Package or Ford Harley-Davidson™ Package)
					SEATING
●	–	–	–	–	Front vinyl 40/20/40 split seat (optional with XL Décor Group)
○	●	–	–	–	Front cloth 40/20/40 split seat with driver manual lumbar (incl. with XL Décor Group)
–	–	●	–	–	Front premium cloth 40/20/40 split seat with driver manual lumbar
–	–	●	●	–	Front sport cloth bucket seats with dual manual lumbar and flow-through console including rear air vents and floor shifter (XLT req. FX2 Sport Package)

● Standard ● Select Availability ○ Optional – Not Available

¹See dealer for availability and restrictions.



FEATURES & OPTIONS

XL					
STX					
XLT					
FX4					
LARIAT					
SEATING (continued)					
-	-	-	-	●	Front leather-trimmed 40/20/40 split seat with driver-side memory, and 10-way power heated driver and right-front-passenger seats (10-way seat includes lumbar)
-	○	-	-	-	Front cloth bucket seats with center console and driver manual lumbar (SuperCab; 4x4 req. ESOF)
-	-	○	-	-	Front premium cloth bucket seats with driver manual lumbar and center console (SuperCab and SuperCrew; SuperCab 4x4 req. ESOF)
-	-	-	○	-	Front sport leather-trimmed bucket seats with heat, dual manual lumbar and flow-through console including rear air vents and floor shifter (incl. with FX4 Luxury Package)
-	-	-	-	○	Front leather-trimmed bucket seats, 10-way power, heated and cooled with driver-side memory and flow-through console including rear air vents (incl. with KING RANCH® and PLATINUM Packages)
-	-	●	●	-	6-way power driver seat (SuperCab and SuperCrew; XLT req. Convenience Package)
●	-	-	-	-	Rear vinyl 60/40 split flip-up seat (SuperCab and SuperCrew)
-	-	●	●	●	Rear premium vinyl 60/40 split flip-up seat (SuperCab and FX4 SuperCrew)
●	●	●	●	-	Rear cloth 60/40 split flip-up seat (SuperCab; one-touch flip-up on SuperCrew)
-	-	-	●	●	Rear leather-trimmed 60/40 split one-touch flip-up seat with folding armrest (SuperCrew; incl. with FX4 Luxury Package)
INTERIOR					
●	●	●	●	-	Air conditioning — Manual
-	-	-	●	●	Air conditioning — Dual-zone Electronic Automatic Temperature Control (incl. with FX4 Luxury Package)
●	-	-	-	-	AM/FM stereo with clock
●	●	●	●	●	AM/FM stereo/single-CD player with MP3 capability, auxiliary audio input jack, speed-compensated volume control, information display with compass, and clock (incl. with XL Plus Package)
-	-	-	●	●	AM/FM stereo/6-disc in-dash CD changer with MP3 capability, auxiliary audio input jack, speed-compensated volume control and information display with compass (incl. with FX4 Plus Package, FX4 Luxury Package and LARIAT Plus Package)
-	-	-	○	○	Sony® AM/FM stereo/6-disc in-dash CD changer with MP3 capability, auxiliary audio input jack, speed-compensated volume control and information display with compass
-	-	-	●	○	Navigation System with 8" in-dash screen and Sony single-CD/DVD player with MP3, DVD-Audio and DVD-Video capabilities; internal hard drive for map and points of interest storage and nearly 10-GB jukebox; SIRIUS Travel Link™ (incl. traffic, weather, fuel information and more) capability; includes subwoofer, speed-compensated volume control, steering wheel-mounted audio and Navigation System controls and auto-dimming rearview mirror with microphone (FX4 req. FX4 Luxury Package)

XL					
STX					
XLT					
FX4					
LARIAT					
INTERIOR (continued)					
-	○	○	○	●	SIRIUS Satellite Radio — Includes integrated satellite receiver, roof-mounted antenna and 6-month trial subscription (Regular Cab and SuperCab 4x4 req. ESOF; n/a with 4.6L 2-valve 4x4)
-	●	○	○	●	Ford SYNC® with 911 Assist™ plus Traffic, Directions and Information — Includes steering wheel-mounted audio/SYNC controls and auto-dimming rearview mirror with microphone (req. cruise control and audio system with CD player)
●	●	●	●	●	Cruise control — Steering wheel-mounted
●	●	●	-	-	Cupholders — Floor console (MSOF 4x4 only)
●	●	●	●	●	Cupholders — Rear passenger (SuperCab and SuperCrew)
●	-	●	●	●	Fade-to-off interior lighting (XL SuperCrew only)
●	●	○	-	-	Floor covering — Vinyl
○	○	●	-	●	Floor covering — Color-coordinated carpet with carpeted front and rear floor mats
-	-	-	●	-	Floor covering — Color-coordinated carpet with Black rubber off-road front and rear floor mats
○	○	○	-	○	Floor mat — Full coverage rubber (XL and STX req. carpet)
●	●	●	●	●	Interior rear dome light (Regular Cab and SuperCab)
●	-	●	●	●	Interior dome light with front map lights (SuperCrew)
-	-	●	●	●	Interior front map lights (XLT SuperCab and SuperCrew only)
-	-	-	-	●	Message center/trip computer — Includes display center features plus distance-to-empty, average fuel economy, multiple language display choices and temperature readout options
●	●	●	●	●	MyKey™ owner controls feature (incl. on XL Plus Package)
-	-	●	●	●	Outside temperature and compass display
●	-	●	●	●	Overhead console with 2 storage bins and map lights
-	-	●	●	●	Power accessory delay
-	-	●	●	-	Power-adjustable pedals
-	-	-	-	●	Power-adjustable pedals with memory
●	●	●	●	●	Power door locks with autolock (XL SuperCrew only)
●	○	●	●	●	Power Equipment Group — Includes power door locks with key fob, windows and sideview mirrors; illuminated entry and autolamp (standard XL SuperCrew)
-	-	-	○	○	Power moonroof — Includes one-touch-open/-close and overhead console with single storage bin
●	●	-	-	-	Rear window — Fixed with solar-tinted glass
-	-	●	-	-	Rear window — Fixed with privacy glass
-	○	○	●	-	Rear window — Fixed with privacy glass and defroster
-	○	●	-	-	Rear window — Manual-sliding with privacy glass (n/a with defroster)
-	-	●	○	●	Rear window — Power-sliding with privacy glass and defroster (req. XLT Convenience Package on XLT SuperCab and SuperCrew)
●	●	-	-	-	Steering wheel — Urethane, Black

XL					
STX					
XLT					
FX4					
LARIAT					
INTERIOR (continued)					
-	-	●	-	-	Steering wheel — Urethane, color-coordinated
-	-	-	●	-	Steering wheel — Leather-wrapped, Black
-	-	-	-	●	Steering wheel — Leather-wrapped, color-coordinated
-	●	●	●	●	Steering wheel-mounted audio controls
●	●	-	-	-	Windows — 1st-row manual (Regular Cab and SuperCab)
●	●	●	●	●	Windows — 1st-row power with one-touch-down driver-window feature (XL SuperCrew)
●	●	-	-	-	Windows — 2nd-row fixed (SuperCab)
●	●	●	●	●	Windows — 2nd-row power (SuperCab and SuperCrew; XL SuperCrew only)
PACKAGES					
●	-	●	-	-	Heavy-Duty Payload Package — Increases GVWR to 8200 lbs. for improved payload and towing; 17" 7-lug steel wheels; LT245/75R17E all-terrain BSW tires; heavy-duty shock absorbers and frame; upgraded springs and radiator; auxiliary transmission oil cooler; rear axle with 9.75" gear set and 3.73 limited-slip gear ratio (Regular Cab and SuperCab with 5.4L V8 only; req. Max. Trailer Tow Package)
●	-	●	●	○	Max. Trailer Tow Package (req. for towing over 5000 lbs.) — Includes Class IV trailer hitch receiver; 7-pin wiring harness; upgraded radiator; auxiliary transmission oil cooler; Trailer Brake Controller; upgraded rear bumper; upgraded rear springs; heavy-duty front eye bushing; and trailer tow mirrors (XL Regular Cab and SuperCab; restrictions apply — see dealer for details)
●	-	●	-	-	Snow Plow Prep Package — Available with 4x4 only (req. Heavy-Duty Payload Package) and includes upgraded springs (Regular Cab and SuperCab; restrictions apply — see dealer for details)
○	○	○	●	●	Trailer Tow Package (req. for towing over 5000 lbs.) — Includes Class IV trailer hitch receiver; 7-pin wiring harness; upgraded radiator; and auxiliary transmission oil cooler
○	-	-	-	-	XL Décor Group — Includes chrome front/rear bumpers and cloth 40/20/40 split front seat with driver manual lumbar
○	-	-	-	-	XL Plus Package — Includes AM/FM stereo with single-CD player; auxiliary audio input jack; cruise control; and MyKey
-	○	-	-	-	STX Décor Package — Includes 18" machined cast-aluminum wheels; P265/60R18 all-season OWL tires (4x2) or P275/65R18 all-terrain OWL tires (4x4); and 5" chrome tubular running boards (SuperCab) or 4" polished stainless steel tubular running boards (Regular Cab)
-	○	-	-	-	STX Plus Package — Includes fog lamps and cruise control

● Standard ● Select Availability ○ Optional — Not Available



FEATURES & OPTIONS

XL					
STX					
XLT					
FX4					
LARIAT					
PACKAGES (continued)					
–	–	●	–	–	XLT Chrome Package – Includes chrome billet-style grille; chrome front tow hooks (4x4); 18" chrome-clad aluminum wheels; P265/60R18 all-season OWL tires (4x2) or P275/65R18 all-terrain OWL tires (4x4); chrome door pulls with black bezels; 5" chrome tubular running boards; chrome exhaust tip; and color-coordinated, leather-wrapped steering wheel (SuperCab and SuperCrew)
–	–	○	–	–	XLT Convenience Package – Includes power, heated sideview mirrors with integrated turn-signal indicators and auto-dimming driver-side feature; auto-dimming rearview mirror; fog lamps; 6-way power driver seat (SuperCab and SuperCrew only); and power-adjustable pedals
–	–	●	–	–	FX2 Sport Package – See description on model comparison page (4x2 SuperCab and SuperCrew only)
–	–	–	○	–	FX4 Luxury Package – Includes Dual-zone Electronic Automatic Temperature Control; steering wheel with secondary audio/climate controls; heated front seats; memory driver seat; power-adjustable pedals with memory; Reverse Sensing System; body-color door handles with SecuriCode™ keyless-entry keypad; FX4 sport leather-trimmed, 10-way power front bucket seats; front flow-through console and floor shifter; auto-dimming rearview mirror with microphone; power, heated sideview mirrors with memory and body-color caps; AM/FM stereo/6-disc in-dash CD changer; power-sliding rear privacy window with defrost; and SYNC® (SuperCab and SuperCrew)
–	–	–	○	–	FX4 Plus Package – Includes AM/FM stereo/6-disc in-dash CD changer with MP3 capability; auxiliary audio input jack; power, heated sideview mirrors with integrated turn-signal indicators and auto-dimming driver-side feature; auto-dimming rearview mirror; power-adjustable pedals; and Reverse Sensing System
–	–	–	–	○	LARIAT Chrome Package – Includes chrome mesh grille insert; 6" chrome angular running boards; body-color door handles with chrome straps and SecuriCode keyless-entry keypad; 18" chrome-clad aluminum wheels; chrome exhaust tip; chrome front tow hooks (4x4); and power, heated sideview mirrors with memory, integrated turn-signal indicators, chrome caps and auto-dimming driver-side feature
–	–	–	–	○	LARIAT Plus Package – Includes AM/FM stereo/6-disc in-dash CD changer with MP3 capability; auxiliary audio input jack; Universal Garage Door Opener; Reverse Sensing System; and Rear View Camera
–	–	–	–	●	Ford Harley-Davidson™ Package – See description on Ford Harley-Davidson™ F-150 feature page (SuperCrew only)
–	–	–	–	●	KING RANCH® Package – See description on model comparison page (SuperCrew only)
–	–	–	–	●	PLATINUM Package – See description on model comparison page (SuperCrew only)

XL					
STX					
XLT					
FX4					
LARIAT					
CUSTOM ACCESSORIES/PRE-INSTALLED					
○	○	○	○	○	Power Code™ Remote Start System (req. Power Equipment Group; n/a with PLATINUM Package, SVT RAPTOR or Ford Harley-Davidson™ Package)
○	○	○	○	○	Chrome bug shield (n/a with PLATINUM Package, SVT RAPTOR or Ford Harley-Davidson™ Package)
FORD WORK SOLUTIONS™					
○	○	○	–	–	In-dash computer featuring Windows® CE operating system with touch screen (n/a with SYNC or SIRIUS Satellite Radio; deletes standard radio)
○	○	○	–	–	Crew Chief™ (n/a with SYNC or in-dash computer)
○	○	○	–	–	Tool Link™ (req. in-dash computer; n/a with Cargo Management System, SYNC, or satellite radio)
○	○	○	○	○	Cable Lock by Master Lock®
3RD-PARTY UPFIT PACKAGE					
●	–	●	–	–	MidBox Prep Package – Includes 145" WB Regular Cab with 5.5' box or 163" WB SuperCab with 5.5' box; via ship-thru process, truck is upfitted with MidBox between cab and pickup box

● Standard ● Select Availability ○ Optional – Not Available

PAYLOAD PACKAGES

REGULAR CAB 4x2			
WHEELBASE	ENGINE	MAX. PAYLOAD (LBS.)	GVWR (LBS.)
126"	4.6L 2-valve	1710	6450
145"	4.6L 2-valve	1890	6750
	4.6L 3-valve	1980	6850
	5.4L 3-valve	2060	7050
	5.4L 3-valve	3030 ¹	8200

SUPERCAB 4x2			
145"	4.6L 2-valve	1600	6700
	4.6L 3-valve	1680	6800
	5.4L 3-valve	1800	7050
	5.4L 3-valve	2030 ²	7500
163"	5.4L 3-valve	2660 ¹	8200

SUPERCREW 4x2			
145"	4.6L 2-valve	1610	6800
	4.6L 3-valve	1680	6900
	5.4L 3-valve	1750	7100
	5.4L 3-valve	1870 ²	7350
157"	4.6L 2-valve	1470	6800
	4.6L 3-valve	1540	6900
	5.4L 3-valve	1670	7100
	5.4L 3-valve	1990 ²	7550

REGULAR CAB 4x4			
126"	4.6L 2-valve	1640	6650
	4.6L 3-valve	1710	6750
	5.4L 3-valve	1660	6800
145"	4.6L 2-valve	1850	6950
	4.6L 3-valve	1950	7050
	5.4L 3-valve	1970	7200
	5.4L 3-valve	2740 ¹	8200

SUPERCAB 4x4			
133" ³	5.4L 3-valve	1020	6950
145"	4.6L 2-valve	1480	6900
	4.6L 3-valve	1550	7000
	5.4L 3-valve	1670	7200
	5.4L 3-valve	1960 ²	7700
163"	5.4L 3-valve	2350 ¹	8200

SUPERCREW 4x4			
145"	4.6L 3-valve	1420	7000
	5.4L 3-valve	1510	7200
	5.4L 3-valve	1910 ²	7675
157"	4.6L 3-valve	1430	7150
	5.4L 3-valve	1540	7350
	5.4L 3-valve	1810 ²	7700

¹Requires Heavy-Duty Payload Package. ²Requires Max. Trailer Tow Package. ³SVT RAPTOR only. **Note:** All figures are subject to change.



CONVENTIONAL TOWING — Maximum Loaded Trailer Weight Ratings (lbs.)

ENGINE	AXLE RATIO	MAX. GCWR (LBS.)	REGULAR CAB		REGULAR CAB		SUPERCAB		SUPERCAB			SUPERCREW		SUPERCREW		
			4x2		4x4		4x2		4x4			4x2		4x4		
			126" WB	145" WB	126" WB	145" WB	145" WB	163" WB	133" WB	145" WB	163" WB	145" WB	157" WB	145" WB	157" WB	
4.6L 2-Valve V8 with 4-Speed Automatic	3.55	10,400	5400	—	—	—	—	—	—	—	—	—	—	—	—	
		10,600	—	5500	—	—	—	5300	—	—	—	—	5200	5100	—	—
	3.73	10,900	5900	—	5700	—	—	—	—	—	—	—	—	—	—	
4.6L 3-Valve V8 with 6-Speed Automatic	3.31	11,100	—	6000	—	5800	—	5800	—	—	5500	—	5700	5600	—	—
		13,100	—	8000	—	—	—	—	—	—	—	—	—	—	—	—
	3.55	13,500	—	—	—	—	8100	—	—	—	—	—	8100	8000	—	—
		12,900	—	—	7700	—	—	—	—	—	—	—	—	—	—	—
		13,100	—	—	—	7700	—	—	—	—	—	—	—	—	—	—
		13,500	—	—	—	—	—	—	—	—	7900	—	—	—	7700	7600
	3.73	13,600	—	8400	—	—	—	—	—	—	—	—	—	—	—	—
		14,900	—	—	—	—	9500	—	—	—	—	—	9400	9300	—	—
		13,300	—	—	8000	—	—	—	—	—	—	—	—	—	—	—
		13,600	—	—	—	8200	—	—	—	—	—	—	—	—	—	—
5.4L 3-Valve V8 with 6-Speed Automatic	3.15	15,100	—	—	—	—	—	—	—	9400	—	—	—	—	9300	9200
		13,200	—	8000	—	—	—	—	—	—	—	—	—	—	—	—
	3.31	14,000	—	—	—	—	8600	—	—	—	—	—	8500	8400	—	—
		13,000	—	—	7700	—	—	—	—	—	—	—	—	—	—	—
		13,200	—	—	—	7700	—	—	—	—	—	—	—	—	—	—
	3.55	14,000	—	—	—	—	—	—	—	—	8300	—	—	—	8100	8000
		13,900	—	—	8600	—	—	—	—	—	—	—	—	—	—	—
		15,000	—	9800	—	9500	—	—	—	—	—	—	—	—	—	—
		15,200	—	—	—	—	9800	—	—	—	—	—	—	—	—	—
		15,300	—	—	—	—	—	—	—	—	—	—	9800	9700	—	—
		15,400	—	—	—	—	—	—	—	—	9700	—	—	—	—	—
	3.73	15,500	—	—	—	—	—	—	—	—	—	—	—	—	9600	9500
		13,900	—	—	8600	—	—	—	—	—	—	—	—	—	—	—
		15,000	—	—	—	9500	—	—	—	—	—	—	—	—	—	—
		15,400	—	—	—	—	—	—	—	—	9700	—	—	—	—	—
		15,500	—	—	—	—	—	—	—	—	—	—	—	—	9600	9500
		16,700	—	11,300 ¹	—	—	—	—	—	—	—	—	—	—	—	—
		16,900	—	—	—	—	11,300	—	—	—	—	—	11,300	—	—	—
4.10	17,000	—	—	—	11,300 ¹	—	—	—	—	—	—	—	11,300	—	—	
	17,100	—	—	—	—	—	11,300 ¹	—	—	11,200 ³	11,100 ¹	—	—	11,200 ³	11,100 ³	
	12,300	—	—	—	—	—	—	6000 ²	—	—	—	—	—	—	—	

Note: Maximum loaded trailer weights shown. The combined weight of the towing vehicle (including hitch, passengers and cargo) and the loaded trailer must not exceed the Gross Combination Weight Rating (GCWR). Note: See RV and Trailer Towing Guide for requirements, restrictions and 5th-wheel towing.

POWERTRAINS

ENGINE	TRANSMISSION	HORSEPOWER (hp @ rpm)	TORQUE (lb.-ft. @ rpm)	2009 EPA-ESTIMATED FUEL ECONOMY ⁴			
				4x2		4x4	
				CITY	HWY.	CITY	HWY.
4.6L 2-valve V8	4-speed auto. with Tow/Haul	248 @ 4750	294 @ 4000	14 mpg	19 mpg	14 mpg	18 mpg
4.6L 3-valve V8	6-speed auto. with Tow/Haul	292 @ 5700	320 @ 4000	15 mpg ⁵	21 mpg ⁵	14 mpg	19 mpg
5.4L 3-valve V8 (gas)	6-speed auto. with Tow/Haul	310 @ 5000	365 @ 3500	14 mpg	20 mpg	14 mpg	18 mpg
5.4L 3-valve V8 (E85)	6-speed auto. with Tow/Haul	320 @ 5200	390 @ 3500	10 mpg	14 mpg	10 mpg	13 mpg

¹Requires Heavy-Duty Payload Package. ²SVT RAPTOR only. ³Requires Max. Trailer Tow Package. ⁴Actual mileage may vary with driving habits. ⁵2010 EPA-estimated fuel economy.

EXTERIOR COLORS



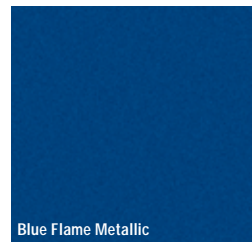
Oxford White



Tuxedo Black Metallic



Vermillion Red



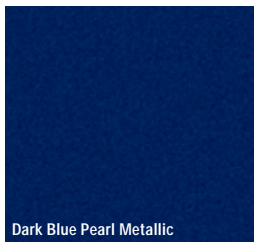
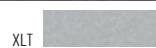
Blue Flame Metallic



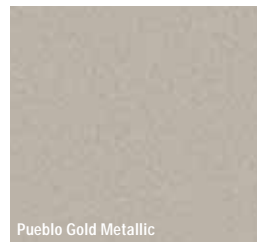
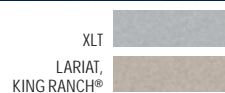
Ingot Silver Metallic



Sterling Grey Metallic



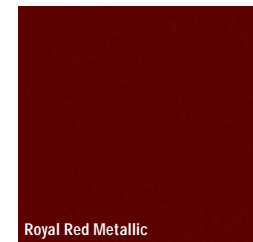
Dark Blue Pearl Metallic



Pueblo Gold Metallic



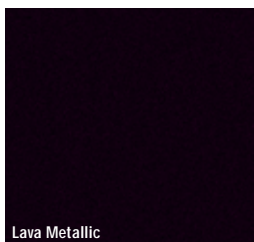
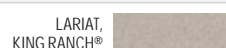
Red Candy Metallic
Tinted Clearcoat



Royal Red Metallic



White Platinum Metallic Tri-Coat



Lava Metallic

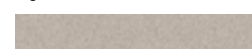


Molten Orange Metallic Tri-Coat

Two-Tone Accent Colors



Ingot Silver Metallic



Pueblo Gold Metallic

	Monotone Exterior	Ingot Silver Two-Tone Exterior
XL		
Oxford White	●	
Tuxedo Black Metallic	●	
Vermillion Red	●	
Blue Flame Metallic	●	
Ingot Silver Metallic	●	
Sterling Grey Metallic	●	
STX		
Oxford White	●	
Tuxedo Black Metallic	●	
Vermillion Red	●	
Blue Flame Metallic	●	
Ingot Silver Metallic	●	
Sterling Grey Metallic	●	
XLT		
Oxford White	●	●
Tuxedo Black Metallic	●	●
Vermillion Red	●	●
Blue Flame Metallic	●	●
Ingot Silver Metallic	●	
Sterling Grey Metallic	●	●
Dark Blue Pearl Metallic	●	●
Pueblo Gold Metallic	●	
Red Candy Metallic Tinted Clearcoat ¹	●	●
Royal Red Metallic	●	
FX2/FX4		
Oxford White	●	
Tuxedo Black Metallic	●	
Vermillion Red	●	
Blue Flame Metallic	●	
Ingot Silver Metallic	●	
Sterling Grey Metallic	●	
Red Candy Metallic Tinted Clearcoat ¹	●	

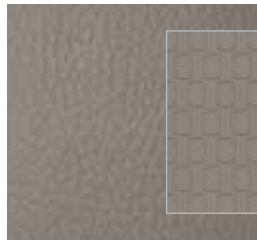
¹Additional-cost option.

INTERIORS:

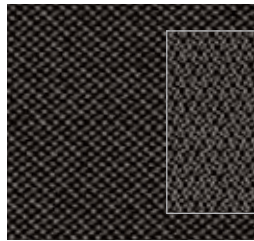
● Camel/Tan ● Medium Stone/Stone ● Black/Black

Colors shown are representative only. Not all colors are available on all models. See your dealer for actual paint/trim options.

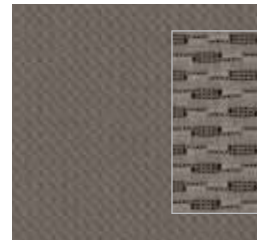
INTERIOR COLORS



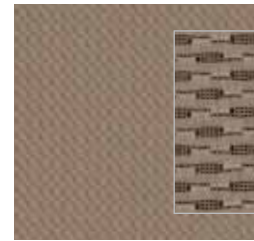
Vinyl – Medium Stone
Standard on XL



Cloth – Medium Stone
Optional on XL, Standard on STX



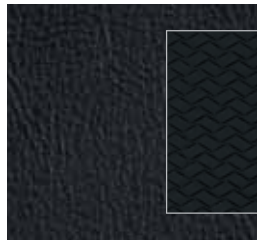
Premium Cloth – Medium Stone
Standard on XLT



Premium Cloth – Camel
Standard on XLT



Sport Cloth – Black
Standard on FX2 and FX4



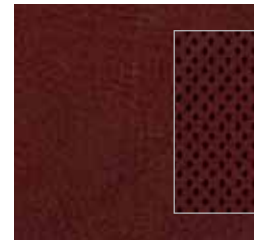
Sport Leather – Black
Optional on FX2 and FX4



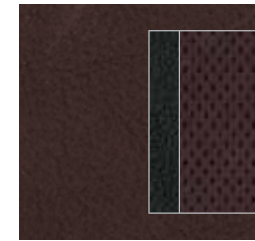
Leather – Camel
Standard on LARIAT



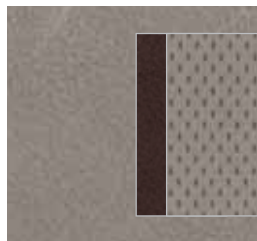
Leather – Black
Standard on LARIAT



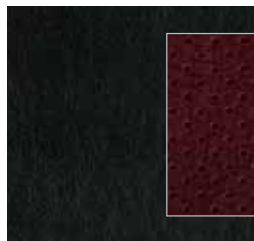
Leather – Chaparral
Standard on KING RANCH®



Leather – Sienna Brown
Standard on PLATINUM



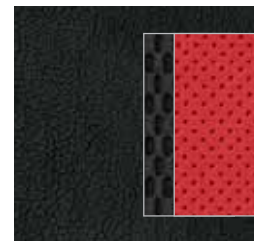
Leather – Medium Stone
Standard on PLATINUM



Leather – Lava/Black insert
Standard on Ford Harley-Davidson™



Leather/Cloth – Black
Standard on SVT RAPTOR



Leather/Cloth – Orange/Black insert
Optional on SVT RAPTOR

	Monotone Exterior	Pueblo Gold Two-Tone Exterior
LARIAT		
Oxford White	● ●	● ●
Tuxedo Black Metallic	● ●	● ●
Ingot Silver Metallic		●
Dark Blue Pearl Metallic	● ●	● ●
Red Candy Metallic Tinted Clearcoat ¹	● ●	● ●
Royal Red Metallic	● ●	● ●
White Platinum Metallic Tri-Coat ¹	● ●	● ●
KING RANCH®		
Oxford White		●
Tuxedo Black Metallic		●
Dark Blue Pearl Metallic		●
Royal Red Metallic		●
White Platinum Metallic Tri-Coat ¹		●
PLATINUM		
Tuxedo Black Metallic	● ●	
Ingot Silver Metallic	● ●	
Sterling Grey Metallic	● ●	
Red Candy Metallic Tinted Clearcoat ¹	● ●	
White Platinum Metallic Tri-Coat ¹	● ●	
FORD HARLEY-DAVIDSON™		
Tuxedo Black Metallic	●	
Lava Metallic	●	
SVT RAPTOR		
Oxford White	●	
Tuxedo Black Metallic	● ●	
Blue Flame Metallic	●	
Molten Orange Metallic Tri-Coat ¹	● ●	

¹Additional-cost option.

INTERIORS:

- Camel/Tan ● Medium Stone/Stone ● Black/Black
- Chaparral/Camel ● Sienna Brown/Black
- Lava/Black ● Orange/Black

WHEELS

17" Grey Styled-Steel
Standard on XL



17" Machined-Aluminum
Standard on STX



17" Machined-Aluminum with Painted Accents
Standard on XLT



17" 7-Lug Steel
Included with Heavy-Duty Payload Package



17" Painted Cast-Aluminum with Machined Finish
Standard on SVT RAPTOR



18" Machined-Aluminum with Painted Accents
Standard on FX2



18" Machined Cast-Aluminum
Standard on FX4,
Included with STX Décor Package



18" Chrome-Clad Aluminum
Included with XLT and LARIAT Chrome Packages



18" 7-Spoke Bright-Aluminum
Standard on LARIAT



18" 7-Spoke Aluminum with Pueblo Gold Painted Accents
Standard on KING RANCH®



20" 6-Spoke Premium Painted-Aluminum
Optional on FX2



20" 6-Spoke Machined-Aluminum
Optional on FX4 and LARIAT



20" Chrome-Clad Aluminum
Optional on XLT and LARIAT Chrome Packages



20" Premium Painted-Aluminum
Optional on KING RANCH®



20" Polished-Aluminum
Standard on PLATINUM



22" Polished Forged-Aluminum with Painted Accents
Standard on Ford Harley-Davidson™ F-150

FORD CUSTOM ACCESSORIES



Dual INVISION™ DVD Headrests¹



Remote Start Systems



Trailer Tow Mirrors



Garmin® Portable Navigation Systems¹



Hood Deflectors



Keyless Entry Keypad



Hard Color-Matched Tonneau Cover¹



THULE® Racks, Carriers and Cargo Holders¹



6" Chrome Step Bar



Chrome Exhaust Tip

Also available:

Bed Accessories

- Tonneau Covers¹
 - Hard Folding
 - Soft Roll-Up
- Cargo Management System
 - Bed Side Rails
 - Cleats
 - Load Bars
 - Divider Panel
- Bed Extender
- Retractable Cable Lock by Master Lock®¹
- Retractable Hooks
- Rubber Mat
- Side Step
- ToughBed® Spray-In Bedliner¹
- Tailgate Liners
- Tiregate® Wheel and Tire Carrier¹

- Side Window Deflectors
- Step Bar
- Splash Guards
- Wiper Shaker De-Icer and Debris Cleaner¹
- EchoMaster® HitchScan™ Rear Park Assist and Hitch Step¹
- Sportz® Truck Tent¹
- Wheel Locks
- Locking Fuel Plug

Interior Accessories/Electronics

- Katzkin® Leather Seat Covers¹
- Interior Lighting Kit
- Electrochromic Mirror w/Compass, Outside Temperature and HomeLink®
- Vehicle Security System
- SmartAlert™ GPS Tracking and Recovery¹
- Cargo Organizers
 - Soft-Sided
 - Soft-Sided Cooler
 - Hard-Sided
- Cargo Area Protector
- All-Weather Floor Mats
- Ashcup/Coin Holder/Smoker's Pack

Towing Accessories

- Trailer Hitch Assembly - 2" Receiver
- Trailer Hitch Balls/Draw Bars
- Wiring Harness Kit

Exterior Accessories

- Custom Chrome Replacement Grilles
- Power Sliding Rear Window
- Manual Sliding Rear Window
- Moonroof Deflector

¹Ford Licensed Accessories.

To learn more about Ford Custom Accessories and to buy them online, visit fordaccessories.com.

Genuine Ford Accessories will be warranted for whichever provides you the greatest benefit: 12 months or 12,000 miles (whichever occurs first), or the remainder of your Bumper-to-Bumper 3-year/36,000-mile New Vehicle Limited Warranty. Contact your local Ford Dealer for details and a copy of the limited warranty. Ford Licensed Accessories (FLA) are warranted by the accessory manufacturer's warranty. Ford Licensed Accessories are fully designed and developed by the accessory manufacturer and have not been designed or tested to Ford engineering requirements. Contact your Ford Dealer for details regarding the manufacturer's limited warranty and/or a copy of the FLA product limited warranty offered by the accessory manufacturer.



Soft Folding Tonneau Cover¹



Sport Liner



Bedliner



Cargo Storage Bin



Interior Cargo Organizer



THE FACTS ABOUT FORD.



Quality Trucks.

FACT: Ford has **more trucks on the road with over 250,000 miles** than any other brand.¹ And Ford F-Series has been **America's best-selling line of trucks** for 32 years in a row.



Green Trucks.

FACT: Ford vans and pickups achieve **best-in-class or unsurpassed fuel economy** in 3 different classes.² And Power Stroke[®] diesels meet stringent federal emissions standards with **Ford Clean Diesel Technology**.TM



Safe Trucks.

FACT: We're working to help keep you and yours safe. **AdvanceTrac[®] with RSC^{®3}** is now available on more Ford Truck models than ever. And F-150's extensive safety features help make it **America's Safest Full-Size Pickup**.⁴



Smart Trucks.

FACT: From **exclusive box-side and tailgate steps** to **Ford Work SolutionsTM** to **Ford SYNC[®]**, no other brand of trucks offers **more innovative** technology and productivity tools to help you get the job done.

Visit fordvehicles.com to learn more.



¹Based on vehicle registration data and latest odometer readings available to R. L. Polk & Co. for 1992 and newer model year full-size pickups and vans still on the road in the U.S. as of April 2008. ²Based on F-150 2010 EPA-estimated 15 mpg city/21 hwy., 4x2 with 4.6L 3-valve V8 engine (class is non-hybrid Full-Size Pickups under 8500 lbs. GVWR); Ranger 2009 EPA-estimated 21 mpg city/26 hwy., 4x2 with 2.3L engine and 5-speed manual transmission; and Transit Connect Small Van 2010 EPA-estimated 22 mpg city/25 hwy. ³Remember that even advanced technology cannot overcome the laws of physics. It's always possible to lose control of a vehicle due to inappropriate driver input for the conditions. For more information on AdvanceTrac with RSC, visit fordvehicles.com. ⁴Based on both NHTSA 5-Star crash test ratings and IIHS Top Safety Pick. Star ratings are part of the U.S. Department of Transportation's Safercar.gov program (www.safercar.gov).