

THE ALL-NEW **2014 SILVERADO**



Information Provided by



/ STRONG. FOR ALL THE ROADS AHEAD.



THE ALL-NEW SILVERADO.

STRONGER, SMARTER AND MORE CAPABLE THAN EVER.

In a world constantly asking us to compromise, we introduce a truck that simply refuses to. After 95 years of legendary truck building and millions of road-tested miles, the 2014 Silverado is new from its sculpted hood, through its new Double Cab and all the way to its available class-leading trailering¹ at the hitch. For 2014, Silverado combines proven power with unparalleled V-8 fuel economy,² and unsurpassed full-size pickup quietness with tough-as-nails ruggedness.

Silverado takes truck capability to a powerfully efficient place with the EcoTec3 engine family—our most advanced truck engines ever. The result is an available 5.3L V-8 generating 355 hp with 23 mpg hwy,² for the best fuel efficiency of any V-8 pickup. You'll also find new unexpected solitude—there isn't a quieter full-size pickup on the road. It's raising the bar yet again for what the most dependable, longest-lasting full-size pickup can help you accomplish. We call it the 2014 Silverado. You'll call it your next truck.



INTERIOR / 05
TECHNOLOGY / 09
EXTERIOR / 11
PERFORMANCE / 15
HANDLING / 17
EQUIPMENT / 24

¹With 2WD Double Cab, available 5.3L V-8 engine and Max Trailering Package (available fall 2013). ²EPA-estimated 16 city/23 hwy mpg (2WD), 16 city/22 hwy mpg (4WD) with the optional 5.3L V-8 engine.

Preproduction model shown. Production models may vary.



*/ YOUR NEW TRUCK IS READY. CHOOSE IT IN
REGULAR, CREW OR **NEW DOUBLE CAB.***





/ YOUR NEW HOME **ON THE RANGE.**



**SIT BACK
AND RELAX:
THERE ISN'T
A QUIETER
FULL-SIZE
PICKUP.**

The 2014 Silverado sets new standards for how functional, smart and quiet a truck can be. You won't find a quieter full-size pickup—thanks to sculpted exterior aerodynamics, inlaid and triple-seal doors, sound-absorbing materials, engine exhaust valving and even active noise cancellation on 6.2L V-8 models (available fall 2013). You'll also find that LT and LTZ models surround you with attractive, durable materials, like door trim panels built to look good and stand up to everyday wear and tear.

A / ALL-DAY COMFORT SEATS

Silverado is all about room. Choose bench or bucket seats for five or six passengers on Double Cab and Crew Cab models. New contoured seats provide lasting comfort. Resilient, dual-firmness foam ensures the seats retain their support over time, reducing driver and passenger fatigue. Optional leather-appointed, perforated heated and cooled front seating further heightens your comfort. Configure the driver seat the way you like it with 10-way power adjustments on LTZ (available on LT) models.

B / CENTER FLOOR CONSOLE STORAGE

The new available center floor console provides the ultimate flexibility with two cavernous storage bins, offering plenty of room for your laptop or other mobile devices. You'll also appreciate the convenience of easy "grab and go" storage pockets integrated into the doors so everything is at your finger tips.

C / REAR-SEAT ACCESS AND STORAGE

Rear-seat access, comfort and storage are improved with nearly 2 inches of extra leg room on Crew Cab models. Getting in and out of the rear seat of the new Double Cab is also easier in tight places, thanks to new forward-hinged rear doors. Both models feature bigger rear doors for easier entry and exit.

D / UPPER AND LOWER GLOVE BOXES

New glove boxes give you and fellow companions your own personal storage areas, all within easy reach.

POWER-SLIDING REAR WINDOW

The available power-sliding rear window now features a new defrost function to aid in visibility.



A / ALL-DAY COMFORT SEATS

B / CENTER FLOOR CONSOLE STORAGE



C / REAR-SEAT ACCESS AND STORAGE

D / UPPER AND LOWER GLOVE BOXES



/ **INFORMATION AT *YOUR GLOVE TIPS.***

Silverado's all-new instrument panel features a six-gauge cluster and integrated center control display. All knobs and buttons are larger to accommodate gloved hands, while gauges are easier to read and are LED back-lit for at-a-glance viewing.



**TECHNOLOGY
THAT
CONNECTS,
PROTECTS
AND
ENTERTAINS.**

A / DRIVER INFORMATION CENTER

(Shown on previous page)

Silverado's new available 4.2-inch diagonal color-enhanced Driver Information Center (DIC) offers improved gauge placement, making important information easy to comprehend at a glance. It displays your truck's vital stats like trailer brake settings and transmission fluid temperature and can be navigated with steering-wheel controls.

B / CONNECTIVITY

Depending on the model you choose, you'll never be far from a convenient power supply: up to six USB ports,¹ four auxiliary power outlets and a new 110-volt outlet keep first- and second-row passengers connected and powered up.

C / NAVIGATION SYSTEM

Using voice or touch commands, Silverado's available Navigation System² uses the 8-inch diagonal center-mounted touch-screen to display 2-D or 3-D map graphics. To avoid trouble, NavTraffic³ (with 3-month trial of SiriusXM) incorporates real-time traffic and road conditions into your NAV screen, directing you toward the most efficient route.

D / COLOR TOUCH RADIO WITH MYLINK

Silverado offers the new available center-mounted 8-inch diagonal Color Touch Radio with MyLink.⁴ Gain hands-free, natural-voice-activated control of your communication choices. Bluetooth^{®5} wireless technology allows you to easily sync your phone with Silverado's audio system. Make phone calls, play music or navigate stored destinations just by saying the word. From the center-mounted full-color touch-screen, easily access the features you use most by customizing MyLink's home screen; no need to navigate a complicated menu. You can even pair up to 10 different devices in the truck.

E / FINGERTIP CONTROLS

Keep your eyes on the road while activating available Bluetooth phone functions using steering-wheel-mounted controls. The system links your compatible device to Silverado's audio system. You can also play audio, change songs, set the cruise control and activate the available heated steering wheel.

F / DRIVER ALERT PACKAGE

Unlike its competitors, Silverado offers the new available Driver Alert Package. It includes Forward Collision Alert (FCA) to warn you when you're rapidly approaching another vehicle and a collision is imminent. Lane Departure Warning (LDW) alerts you if you wander from your lane without using your turn signal. Both provide a visual alert and a choice of audible signals, or the new Safety Alert Driver Seat uses vibrations to warn you.

¹Not compatible with all devices. ²Map coverage available in the United States, Puerto Rico and Canada. ³If you subscribe after your trial period, *subscriptions are continuous until you call SiriusXM to cancel.* See SiriusXM Customer Agreement for complete terms and geographic limitations at siriusxm.com. Other fees and taxes will apply. All fees and programming subject to change. ⁴Full functionality requires compatible Bluetooth and smartphone. Some devices require USB connectivity. Data plan rates apply. ⁵Go to gtotalconnect.com to find out which phones are compatible with the vehicle.



B / CONNECTIVITY

C / NAVIGATION SYSTEM

D / COLOR TOUCH RADIO

E / FINGERTIP CONTROLS

F / DRIVER ALERT PACKAGE

/ THE STRONGER, MORE SILENT TYPE.





**URNS AIR
INTO A
POWERFUL
ALLY.**



For 2014, Silverado's rugged good looks combine style with functional design. Reduced wind noise and increased fuel efficiency¹ result from bold lines that glide from its new three-dimensional signature grille, up the lines of its angled, aerodynamic windshield and around the wheel wells to wrap the truck in a style uniquely Silverado.

DYNAMIC STYLING

The new Silverado was designed with the goal of commanding attention. This is accomplished with strong, muscular lines and distinctive curves. Even the fenders are sculpted aggressively outward to help protect the finish against chipping from debris thrown by the wheels.

A / PROJECTOR-BEAM LIGHTING

Silverado introduces a new available projector-beam headlamp fully integrated into the grille surround. The tightly controlled light pattern of projector-beam lamps increases their range and brightness, while reducing glare for oncoming vehicles.

B / OPTIMIZED AIRFLOW

The new dimensional grille helps manage and optimize airflow to capture a greater percentage of air to help cool the engine. Now, only air necessary for cooling is directed into the engine compartment, while the rest flows smoothly around the truck. Silverado's styling also helps reduce wind noise to create a quieter cabin. The resulting lower drag coefficient contributes to Silverado's impressive fuel efficiency.¹

C / EASY-OPENING DOORS

The all-new Silverado Double Cab features forward-hinged rear doors to help improve access and reduce wind noise. To quiet the interior further, all Silverado models feature new triple door seals and an inlaid door design that fits the doors flush with the body.

D / AEROSPATS

What's an aerospat, you ask? They are new air deflectors positioned in front of the rear tires to direct air around them, helping reduce turbulence and drag. The result is a more efficient driving experience.

TAILGATE SPOILER

To reduce turbulence and improve aerodynamics, a new rear spoiler is seamlessly integrated into the top of the tailgate.



A / PROJECTOR-BEAM LIGHTING B / OPTIMIZED AIRFLOW



C / EASY-OPENING DOORS



D / AEROSPATS

¹EPA-estimated 16 city/23 hwy mpg with the optional 5.3L V-8 engine (2WD). EPA estimates are not yet available for the 4.3L V-6, coming summer 2013, or the 6.2L V-8, coming fall 2013.

PUT 2108 LBS TO WORK.

The all-new Silverado offers a maximum payload of more than a ton¹ to solve your cargo challenges. The new available 6-foot, 6-inch cargo box on Crew Cab gives you nearly an extra foot of hauling capacity. Depending on the cab, 8-foot and 5-foot, 8-inch box configurations are also available.

REDESIGNED CARGO BOX

The pickup box floor is expertly crafted from strong and durable roll-formed steel. And simple, yet all-too-important elements like standard rail protectors at the top of the box and the tailgate improve damage resistance.

A / CORNERSTEP REAR BUMPER

We've made getting into the bed even easier. Integrated into the corners of both ends of the rear bumper, new available corner steps help you access the cargo box. Their deep nonslip treads easily accommodate even the largest steel-toed work boots.

B / HAND ASSISTS

New hand assists built into the top of the side rails—along with the corner steps—also help give you a boost into the bed.

C / LED UNDER-RAIL LIGHTS

New available LED under-rail box lights are conveniently positioned under each cargo box rail for easier loading and unloading at night, or when the box is enclosed by a tonneau cover.

D / MOVABLE TIE-DOWN HOOKS

Organize your cargo the way you want with four standard lower tie-downs and four available movable upper tie-down hooks. These four new patented, load-bearing upper tie-downs are rated at 250 pounds each and can be positioned in several places around the box depending on the cargo.



A / CORNERSTEP REAR BUMPER



B / HAND ASSISTS



C / UNDER-RAIL LIGHTS



D / MOVABLE TIE-DOWN HOOKS



¹Maximum payload capacity includes weight of driver, passengers, optional equipment and cargo.



**THE NEW STANDARD:
THE BEST V-8
FUEL ECONOMY¹
OF ANY PICKUP.**

The 2014 Silverado takes its legendary truck capability to a new place with the EcoTec3 engine family. Building on 58 years of proven V-8 experience and trillions of real-world miles produces an optional 5.3L V-8 with the best V-8 fuel efficiency of any pickup (in two-wheel and four-wheel drive), including some competitors' V-6s.¹ Now, with Silverado's 5.3L V-8, you don't have to settle for a V-6.

The EcoTec3 engines—4.3L V-6 (coming summer 2013), 5.3L V-8 and 6.2L V-8 (coming fall 2013)—are the only engines using Direct Injection, Active Fuel Management and continuously Variable Valve Timing together to deliver robust power with ruthless fuel efficiency.² You get the best of

proven power and the dependability of a V-8 truck engine, with better efficiency than even some V-6 engines. It's a combination no one else can match.

Silverado's available 6.2L V-8 earns the coveted title of the most powerful engine in any light-duty pickup. Not to be outdone, the 4.3L V-6 easily generates the most torque of any standard V-6 in its class. At 285 hp and 305 lb-ft of torque, the 4.3L is the latest evolution of Silverado's do-more, haul-more and tow-more legacy. Translating all of this power and torque to the road is our invincible electronically controlled Hydra-Matic 6-speed automatic transmission.



¹EPA-estimated 16 city/23 hwy mpg (2WD), 16 city/22 hwy mpg (4WD). ²EPA-estimated 16 city/23 hwy mpg with the optional 5.3L V-8 engine (2WD). EPA estimates are not yet available for the 4.3L V-6 or the 6.2L V-8.

ADVANCED ENGINE TECHNOLOGIES.

PROVEN TRUCK PERFORMANCE.

A / VARIABLE VALVE TIMING (VVT)

For responsiveness in low-speed city driving and bold power for open-road passing or trailering, all Silverado engines feature continuously VVT. It monitors and adjusts valve open and close points for near-peak levels of torque across the entire range of engine speeds.

B / DIRECT INJECTION (DI)

For precise fuel distribution and fast, efficient combustion, all engines benefit from DI technology. The system moves the fuel into the combustion chamber. By injecting fuel at over 2000 psi, the air and fuel mix more completely.

C / ACTIVE FUEL MANAGEMENT (AFM)

By sensing load and demand, AFM improves efficiency by activating or deactivating cylinders (two on the V-6 and four on the V-8). Under demanding conditions, like high speeds or when loads require more power, the valve's switching mechanism is depressurized, re-engaging the cylinder and restoring full power—without you ever noticing the transition.



Information Provided by:

DEALER
E-PROCESS

/ HANDLING IS A TEAM SPORT.

You'll find Silverado's handling prowess is the direct result of the seamless teamwork of hundreds of components. This precise integration of tires, wheels, chassis, suspension, steering, braking and axles gives you dynamic command and control. Engineers also wanted to build upon Silverado's already impressive ride and handling, all without diminishing its legendary power, capability and durability. The result gives you a Silverado that's remarkably stronger, smarter and more capable than ever.



ROCK. SOLID. FOUNDATION.

A / COIL-OVER-SHOCK FRONT SUSPENSION

This fully independent system is precisely tuned for improved handling. The front shock module is enhanced to increase road isolation in response to even small inputs. A thicker spring isolator and a higher spring rate produce a more controlled ride. The new 34-millimeter hollow stabilizer bar reduces weight without sacrificing vehicle stability.

B / CORROSION-RESISTANT DURALIFE BRAKE ROTORS

To reinvent the brake rotor, Chevy engineers used Ferritic Nitro-Carburizing (FNC) technology, which can help double rotor life. Duralife is a patented GM-exclusive corrosion protection process designed to prolong rotor life by hardening the rotor surface. It provides protection against rust to help prevent steering-wheel shudder during braking.

C / HYDROFORMED FRAME

Providing Silverado with the ultimate in a rock-solid foundation is a hydroformed, boxed, high-strength steel frame. This allows Silverado to haul more, tow more and tackle more rugged terrain while you and your companions are sitting comfortably.

D / ELECTRIC RACK-AND-PINION STEERING

The new electric variable-assist power rack-and-pinion steering system improves fuel efficiency¹ versus engine-powered systems. The variable assist is tuned to provide less assist at highway speeds for a solid on-center feel, and more assist for less steering effort when maneuvering in tight spaces.



E / STABILITY CONTROL

StabiliTrak, an electronic control system, helps improve stability by detecting and reducing loss of traction. Sensing when Silverado is not responding to your steering inputs, it adjusts engine speed and applies brake pressure to any wheel to help maintain directional control. For rollover mitigation, StabiliTrak anticipates a potential situation, rapidly applying brake pressure to help reduce lateral forces and the likelihood of a rollover.

F / HIGH LATERAL-RATE BODY MOUNTS

To connect the body to the frame are new high lateral-rate and redesigned hydraulic body mounts. You'll enjoy improved comfort and a smoother, quieter ride. The new shear-style mounts at the front of the cab dampen side-to-side vibrations, while the new hydraulic mounts at the rear of the cab dampen vertical vibrations.

G / AUTOMATIC LOCKING REAR DIFFERENTIAL

Available on 2WD and 4WD models, it directs power to the wheel with the most traction on loose gravel or slippery surfaces.

H / LARGER RING GEARS

Silverado's increased horsepower and torque call for an enhanced way to transmit power to the tires. That's why the V-8s feature an axle with a larger ring gear, and the redesigned rear axles are now stronger and beefier to handle the increased power capacity. This robust axle design also provides improved durability.

I / WIDER WHEELS

This is where every power, torque and handling innovation engineered into Silverado meets the terrain. That's why new half-inch-wider 17-, 18- and 20-inch wheels provide greater on-center feel and crisper control during subtle steering movements.

J / TUNED MULTILEAF REAR SPRINGS

Two-stage rear leaf springs provide the perfect balance between ride smoothness and hauling capability. They've also been tuned for improved ride and noise reduction as well as enhanced corrosion resistance.

¹EPA-estimated 16 city/23 hwy mpg with the optional 5.3L V-8 engine (2WD). EPA estimates are not yet available for the 4.3L V-6, coming summer 2013, or the 6.2L V-8, coming fall 2013.



**CLASS-
LEADING
TOY-HAULING
AND WORK-
SHRINKING
TOWING.¹**

*Requires 2WD Double or Crew Cab with optional 6.2L V-8 and Max Trailering Package (available fall 2013).

Information Provided by

Silverado has always been built for trailering. And the all-new Silverado pulls even more. Its new available Max Trailering Package¹ offers a class-leading trailer weight rating of up to 12,000 lbs.²

MAX TRAILERING PACKAGE

Best-in-class towing results from an automatic locking rear differential, Z82 Trailering Package, heavy-duty 9.76-inch axle with 3.73 axle ratio, increased-capacity rear springs, integrated trailer brake controller, enhanced cooling system and recalibrated shock tuning for increased control.

A / TRAILER BRAKE CONTROLLER

For fingertip control and easy monitoring of your trailer brakes, Silverado offers an available integrated trailer brake controller. Now conveniently located to the left of the steering wheel, it displays the level of brake force or "gain" in the Driver Information Center.

B / TOW/HAUL MODE

To give you more power to accelerate when trailering or hauling heavy loads, Tow/Haul mode raises transmission upshift points. It also helps you slow Silverado by raising downshift points, using engine compression to slow your Silverado instead of merely braking.

TRAILER SWAY CONTROL

Keep both you and your trailer heading in the same direction, automatically. This system uses StabiliTrak sensors to detect a swaying trailer, and it applies both the vehicle's and the trailer's brakes (if properly equipped) to help bring it back in line.

C / REAR-VISION CAMERA SYSTEM

The center screen also serves as your monitor for the available Rear-Vision Camera System. Its dynamic grid lines provide the perfect target when backing up or hitching a trailer.

HILL START ASSIST

Sensors automatically detect when Silverado is on a 5 percent grade or more. It holds the brakes for up to 1.5 seconds or until the accelerator is pressed, preventing rollback. It's most effective when trailering, giving you time to switch from the brake to the accelerator.

AUTO GRADE BRAKING

When in Tow/Haul mode, this standard feature automatically senses when you want to slow your Silverado and engages a Grade Braking shift pattern to help maintain your desired speed.

¹Available fall 2013. ²Silverado Double or Crew Cab 2WD with optional 6.2L EcoTec3 engine with Max Trailering Package (available fall 2013). Maximum trailer weight ratings are calculated assuming a base vehicle, except for any option(s) necessary to achieve the rating, plus driver. The weight of other optional equipment, passengers and cargo will reduce the maximum trailer weight your vehicle can tow. See your Chevrolet dealer for additional details.



A / TRAILER BRAKE CONTROLLER

B / TOW/HAUL MODE



C / REAR-VISION CAMERA SYSTEM

RUGGED LUXURY. INTRODUCING THE NEW **HIGH COUNTRY.**

The all-new Silverado High Country (coming fall 2013) takes you to a higher altitude. Outside, you'll find 20-inch signature chrome wheels, halogen projector-beam headlamps, chrome power-folding heated mirrors, Front and Rear Park Assist, body-color front and rear bumpers, signature chrome grille, black recovery hooks, chrome bodyside moldings, a polished exhaust tip and movable upper cargo tie-downs.



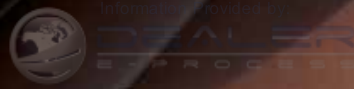
Information Provided by:

DEALER
PROCESS



/ COMFORT, ELEVATED.

Inside High Country you'll enjoy a premium grade of leather-appointed 12-way, power-adjustable heated and cooled front bucket seats, exclusive Saddle interior color, a Bose® premium audio system, a brushed-metal sill plate and a center-mounted floor console.



PAVED ROADS ARE ONLY A SUGGESTION.

Z71 OFF-ROAD.

Keep going long after the pavement ends by choosing one of the Silverado Z71 Off-Road models. New for 2014 is Hill Descent Control, and also included are off-road jounce bumpers, a high-capacity air cleaner, underbody transfer case shield protection and monotube Rancho® shocks. Standard on Z71 models is a GM-exclusive automatic locking rear differential, which reacts in milliseconds to low-traction situations for improved forward motion. On wet, snowy or muddy terrain, Silverado takes power from the wheel with less grip and transfers it to the wheel with more traction to keep you moving.



IT'S ALL YOU.

Designed and engineered to the same standards as your Silverado, Chevy Accessories allow you to personalize your Silverado and range from functional enhancements like assist steps and bed management systems to stylish wheels and accents.

A / RECOVERY HOOKS

Add functionality and enhance the appearance of your Silverado with chrome or black recovery hooks.

B / LADDER RACK

Engineered to deliver strong load support, these rack systems and ladder racks by TracRac,[®] a division of Thule,[®] are geared specifically for all trade professionals. They are made of heavy-duty steel to be aerodynamic and quiet.

C / ASSIST STEPS

Make it easier to get into and out of your Silverado with these stylish steps. The 6-inch rectangular steps are aluminum and the 4-inch round steps are stainless steel. Both are rust-resistant and available in either chrome or black powder coat.

D / STATIONARY TOOLBOX

This durable, diamond-patterned aluminum toolbox handles up to 250 lbs.¹ It features a removable sliding tray with rubber mat, dual gas shocks for smooth operation and a one-touch latch. It mounts securely to the bed without drilling and has the Chevy bowtie logo. Not available with bed rug or any tonneau cover.

SOFT TONNEAU COVER

A roll-up soft folding tonneau with integrated cross bows shields cargo and allows full access to the bed. Not shown.

PREMIUM ALL-WEATHER FLOOR MATS

Premium all-weather floor mats are designed specifically for your Silverado to help collect rain, mud, snow and debris. Not shown.

ACCESSORY WHEELS

Stand out with a vast array of factory-engineered and -approved wheels from Chevy Accessories.² All wheels feature a brilliant durable chrome finish and are available with matching lugs and Chevy logo center caps.



See gmaccessorieszone.com to learn about additional options, which are updated regularly. Or talk to your local Chevy dealer.

¹Cargo and load capacity limited by weight and distribution. ²Use only GM-approved tire and wheel combinations. Unapproved combinations may change the vehicle's performance characteristics. For approved tire and wheel combinations and other important information, go to gmaccessorieszone.com or see your dealer for details.



EXTERIOR COLORS



¹Extra cost color. Only available on Crew Cab. Not available on 1WT models.

WHEELS



17" PAINTED
STEEL (RD6)
STANDARD ON 1WT



17" STAINLESS
STEEL-CLAD (RD7)
STANDARD ON 2WT



17" BRIGHT
MACHINED (Q5U)
STANDARD ON LT
AND LT Z71



18" BRIGHT
MACHINED (PZX)
STANDARD ON LTZ,
AVAILABLE ON LT



18" BRIGHT
MACHINED (RD1)
STANDARD ON
LTZ Z71, AVAILABLE
ON LT Z71



20" POLISHED
ALUMINUM (RD4)
AVAILABLE ON LT
AND LT Z71



20" CHROME-
PLATED (RD2)
AVAILABLE ON LTZ
AND LTZ Z71



20" CHROME-
PLATED (NZJ)
STANDARD ON
HIGH COUNTRY

For more information, see chevrolet.com/2014silverado.

INTERIOR COLORS & SEATING SURFACES

VINYL

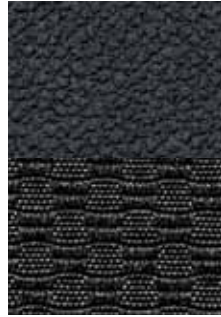


JET BLACK/DARK ASH
STANDARD ON 1WT

CLOTH



JET BLACK/DARK ASH CLOTH
STANDARD ON 2WT
AVAILABLE ON 1WT, LT AND LT Z71



JET BLACK/JET BLACK CLOTH
STANDARD ON LT AND LT Z71



COCOA/DUNE CLOTH
AVAILABLE ON LT AND LT Z71

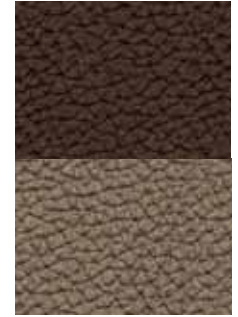
LEATHER-APPOINTED



JET BLACK/JET BLACK LEATHER-APPOINTED
STANDARD ON LTZ AND LTZ Z71
AVAILABLE ON LT AND LT Z71



JET BLACK/DARK ASH LEATHER-APPOINTED
STANDARD ON LTZ AND LTZ Z71

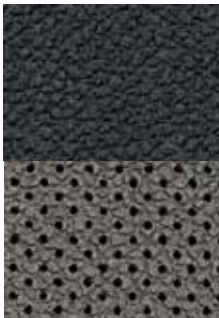


COCOA/DUNE LEATHER-APPOINTED
STANDARD ON LTZ AND LTZ Z71

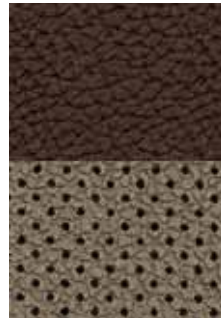
PERFORATED LEATHER-APPOINTED



JET BLACK/JET BLACK PERFORATED LEATHER-APPOINTED
AVAILABLE ON LTZ AND LTZ Z71



JET BLACK/DARK ASH PERFORATED LEATHER-APPOINTED
AVAILABLE ON LTZ AND LTZ Z71



COCOA/DUNE PERFORATED LEATHER-APPOINTED
AVAILABLE ON LTZ AND LTZ Z71

SADDLE



SADDLE PERFORATED LEATHER-APPOINTED
STANDARD ON HIGH COUNTRY



Information Provided by:

DEALER
E-PROCESS

ONSTAR

The level of convenience and safety provided by the various features available through OnStar¹ offers powerfully simple connectivity and peace of mind. To place this capability at your fingertips, Silverado is available with a 6-month trial subscription to the OnStar Directions & Connections Plan. This plan includes:



COMMUNICATIONS • OnStar RemoteLink Mobile App² • Hands-Free Calling³ with voice-activated dialing

DIAGNOSTICS • OnStar Vehicle Diagnostics

NAVIGATION⁴ • OnStar eNAV with MapQuest.com • Turn-By-Turn Navigation⁴ • Destination Download

CONFIDENCE • Stolen Vehicle Assistance⁵ • Roadside Assistance • Remote Door Unlock⁵ • Remote Horn and Lights • Crisis Assist • Emergency Services Link • Automatic Crash Response

¹Visit onstar.com for coverage map, details and system limitations. OnStar acts as a link to existing emergency service providers. Services vary with model and conditions. ²Available on select iPhone,® Android™ and BlackBerry® devices. Services vary by phone, vehicle and conditions. Requires active OnStar subscription. ³OnStar Hands-Free Calling (HFC) requires HFC-enabled vehicle, existing OnStar service contract and prepaid calling minutes and is not available in certain markets. Calls may be made to the U.S. and Canada. ⁴Requires Directions & Connections Plan. Not available in certain areas. Visit onstar.com for coverage map, details and system limitations. ⁵Ability to locate stolen vehicles and remote door unlock success varies with conditions. ⁶Cargo and load capacity limited by weight and distribution. ⁷When properly equipped; includes weight of vehicle, passengers, cargo and equipment.

SILVERADO SPECIFICATIONS

CARGO DIMENSIONS ⁶			
DIMENSIONS	SHORT BOX	STANDARD BOX	LONG BOX
Cargo Volume	53.4 cu. ft.	61.0 cu. ft.	76.3 cu. ft.
Inside Width at Floor	51.0"	51.0"	51.0"
Box Length at Floor	69.3"	78.9"	97.8"
EXTERIOR DIMENSIONS			
	REGULAR CAB	DOUBLE CAB	CREW CAB
Height	73.5"-74.1"	73.9"	73.7"-74.2"
Overall Length			
Short Box	—	—	230.0"
Standard Box	205.6"	230.0"	239.6"
Long Box	224.4"	—	—
INTERIOR DIMENSIONS			
	REGULAR CAB	DOUBLE CAB	CREW CAB
Head Room (front/rear)	42.4"/—	42.8"/38.7"	42.8"/40.5"
Leg Room (front/rear)	45.3"/—	45.3"/34.6"	45.3"/40.9"
Shoulder Room (front/rear)	66.0"/—	65.9"/65.8"	66.0"/65.7"
WHEELBASE			
	REGULAR CAB	DOUBLE CAB	CREW CAB
Short Box	—	—	143.5"
Standard Box	119.0"	143.5"	153.0"
Long Box	133.0"	—	—
STANDARD TECHNICAL DATA			
Series/Drive Type	1500/2WD	1500/4WD	
BRAKES	Front disc/rear disc (w/Duralife rotors)	Front disc/rear disc (w/Duralife rotors)	
All models: Power 4-wheel antilock braking system			
STEERING	Electric power rack-and-pinion with variable assist	Electric power rack-and-pinion with variable assist	
FUEL TANK CAPACITY (Approx. gals.: Short/Standard/Long Box)	26.0/26.0/34.0	26.0/26.0/34.0	
ALTERNATOR (amps)	150	150	
GVWR ⁷ (Gross Vehicle Weight Rating, lbs)			
Regular Cab	6500-6800	6700-7000	
Double Cab	6900-7200	7100-7200	
Crew Cab	6900-7200	7100-7200	

SILVERADO 1500 SPECIFICATIONS

ENGINES

	EcoTec3 4.3L V-6 VVT DI AFM FlexFuel Aluminum Block (LV3) (Available summer 2013)	EcoTec3 5.3L V-8 VVT DI AFM FlexFuel Aluminum Block (L83)	EcoTec3 6.2L V-8 VVT DI AFM FlexFuel Aluminum Block (L86) (Available fall 2013)
CAPACITY	4.3 liters (262 cu. in.)	5.3 liters (325 cu. in.)	6.2 liters (376 cu. in.)
SAE NET HORSEPOWER @ RPM	285@5300 gasoline 297@5300 E85	355@5600 gasoline 380@5600 E85	NOTE: The 6.2L engine as well as its specifications will be available fall 2013. Please see your Chevrolet dealer for more information.
SAE NET TORQUE @ RPM (LB-FT)	305@3900 gasoline 330@3900 E85	383@4100 gasoline 416@4100 E85	
ENGINE / MODEL AVAILABILITY			
Regular Cab	●	○	—
Double Cab	●	○	○
Crew Cab	●	○	○
FUEL ECONOMY (city/hwy mpg)			
2WD	EPA estimates not yet available.	16/23 ¹	EPA estimates not yet available.
4WD	EPA estimates not yet available.	16/22 ¹	EPA estimates not yet available.
TRANSMISSION:	1500: Electronically controlled 6-speed automatic transmission with overdrive, electronic engine grade braking and Tow/Haul mode		

SILVERADO 1500 SUSPENSIONS²

FRONT SUSPENSION COIL-OVER-SHOCK

FRONT AXLE/ SPRING CAPACITY (lbs)	2WD (Short/Standard/Long Box)	4WD
Regular Cab	— /3200/3300	— /3950/3950
Double Cab	— /3600/—	— /3950/—
Crew Cab	3650/3650/—	3950/3950/—

REAR SUSPENSION SEMI-ELLIPTICAL 2-STAGE MULTILEAF SPRINGS

REAR AXLE/SPRING CAPACITY (lbs)	2WD (Short/Standard/Long Box)	4WD
Regular Cab	— /3800/3950	— /3850/3950
Double Cab	— /3950/—	— /3950/—
Double Cab w/Max Trailering Package ³	— /4100/—	— /4100/—
Crew Cab	3950/3950/—	3950/3950/—
Crew Cab w/Max Trailering Package ³	4100/4100/—	4100/4100/—

KEY ● STANDARD ○ AVAILABLE — NOT AVAILABLE

¹EPA estimate. ²Capacities and weight ratings are dependent on model, engine, transmission and GVWR combinations. See your Chevrolet dealer for details. ³Available fall 2013. See your Chevrolet dealer for more details.

PAYLOAD AND TRAILERING SPECIFICATIONS

Model	Engine	Axle Ratio	Max Payload ¹	Max Conventional Trailering ²	
Regular Cab Standard Box	4.3L	3.23	2088	6400	
	2WD	5.3L	3.08	2072	7300
		5.3L	3.42	2072	9300
Regular Cab Standard Box	4.3L	3.42	2088	7200	
	4WD	5.3L	3.08	2068	7100
		5.3L	3.42	2068	9100
Regular Cab Long Box	4.3L	3.23	2108	6300	
	2WD	5.3L	3.08	2102	7200
		5.3L	3.42	2102	10,200
Regular Cab Long Box	4.3L	3.42	2059	7000	
	4WD	5.3L	3.08	2053	6900
		5.3L	3.42	2053	9900
Double Cab Standard Box	4.3L	3.23	2015	6000	
	2WD	5.3L	3.08	2012	6900
		5.3L	3.42	2012	9900
		5.3L	3.73 ³	2101 ³	11,500 ³
	6.2L	3.42	1901	9800	
		3.73 ³	1944 ³	12,000 ³	
Double Cab Standard Box	4.3L	3.42	1971	6700	
	4WD	5.3L	3.08	1974	6600
		5.3L	3.42	1974	9600
		5.3L	3.73 ³	1866 ³	11,200 ³
	6.2L	3.42	1823	9500	
		3.73 ³	1686 ³	11,800 ³	
Crew Cab Short Box	4.3L	3.23	1933	5900	
	2WD	5.3L	3.08	1933	6800
		5.3L	3.42	1933	9800
		5.3L	3.73 ³	2007 ³	11,400 ³
	6.2L	3.42	1819	9700	
		3.73 ³	1866 ³	12,000 ³	

PAYLOAD AND TRAILERING SPECIFICATIONS continued

Model	Engine	Axle Ratio	Max Payload ¹	Max Conventional Trailering ²	
Crew Cab Short Box	4.3L	3.42	1936	6700	
	4WD	5.3L	3.08	1957	6600
		5.3L	3.42	1957	9600
		5.3L	3.73 ³	1830 ³	11,200 ³
		6.2L	3.42	1805	9500
6.2L	3.73 ³	1645 ³	11,800 ³		
	Crew Cab Standard Box	4.3L	3.23	1875	5800
2WD	5.3L	3.08	1871	6700	
	5.3L	3.42	1871	9700	
	5.3L	3.73 ³	1947 ³	11,300 ³	
	6.2L	3.42	1759	9600	
		3.73 ³	1797 ³	12,000 ³	
Crew Cab Standard Box	4.3L	3.42	1878	6600	
4WD	5.3L	3.08	1883	6500	
	5.3L	3.42	1883	9500	
	5.3L	3.73 ³	1751 ³	11,100 ³	
	6.2L	3.42	1746	9400	
		3.73 ³	1577 ³	11,700 ³	

SILVERADO AXLE RATINGS AND PLOW WEIGHTS
**FRONT GROSS AXLE WEIGHT RATING (FGAWR)
WITH SNOW PLOW PREP PACKAGE (4WD MODELS ONLY)**

BODY	ENGINE	ENGINE TYPE	1500
Regular Cab	4.3L	Gas	3950
	5.3L	Gas	3950

MAXIMUM PLOW WEIGHTS (4WD MODELS ONLY)

BODY	ENGINE	ENGINE TYPE	1500
Regular Cab	4.3L	Gas	40/500 ⁴
	5.3L	Gas	40/500 ⁴

¹Maximum payload capacity includes weight of driver, passengers, optional equipment and cargo. ²Maximum trailer weight ratings are calculated assuming a base vehicle, except for option(s) necessary to achieve the rating, plus driver. The weight of other optional equipment, passengers and cargo will reduce the maximum trailer weight your vehicle can tow. See your Chevrolet dealer for additional details. ³Requires Max Trailering Package. Available fall 2013. See your Chevrolet dealer for more details. ⁴100/xxx=100 lbs maximum of permanently attached snow plow mounting hardware/xxx lbs maximum of removable snow plow blade and blade hardware. Maximum plow weights based on a vehicle with average manufacturer option content and 150 lbs each for driver and one additional front-seat occupant. Additional equipment and occupants will reduce maximum plow weight. Rear compensating weight may be required to maintain front axle weight below 65% of total vehicle weight when equipped with snow plow. Consult your snow plow manufacturer for specific compensating weight recommendation.

TRIM LEVELS

CONFIGURATIONS

	1WT	2WT	LT	LT Z71	LTZ	LTZ Z71	HIGH COUNTRY
REGULAR CAB	●	●	●	●	—	—	—
DOUBLE CAB	●	●	●	●	●	●	—
CREW CAB	●	●	●	●	●	●	●
2WD	●	●	●	●	●	●	●
4WD	●	●	●	●	●	●	●

MECHANICAL

AIR CLEANER High capacity	—	—	—	●	—	●	—
ALUMINIZED STAINLESS-STEEL MUFFLER AND TAILPIPE	●	●	●	●	●	●	●
ALTERNATOR 150 amps	●	●	●	●	●	●	●
BATTERY Heavy-duty maintenance-free with rundown protection and retained accessory power	●	●	●	●	●	●	●
BRAKES 4-wheel disc with Duralife rotors, 4-wheel antilock	●	●	●	●	●	●	●
AUXILIARY EXTERNAL TRANSMISSION OIL COOLER Included and only available with V-8 engine on WT, LT and LT Z71 models	●	●	●	●	●	●	●
EATON® HEAVY-DUTY AUTOMATIC LOCKING REAR DIFFERENTIAL Included with Trailing Package or Max Trailing Package	●	●	●	●	●	●	●
ENGINE 4.3L V-6 EcoTec3 with aluminum block. Includes Active Fuel Management, Direct Injection and continuously Variable Valve Timing. Includes FlexFuel capability. Available summer 2013.	●	●	●	●	—	—	—
5.3L V-8 EcoTec3 with aluminum block. Includes Active Fuel Management, Direct Injection and continuously Variable Valve Timing. Includes FlexFuel capability.	●	●	●	●	●	●	●
6.2L V-8 EcoTec3 with aluminum block. Includes Active Fuel Management, Direct Injection and continuously Variable Valve Timing. Available fall 2013.	—	—	—	●	●	●	●
STABILITRAK STABILITY CONTROL SYSTEM Includes Proactive Roll Avoidance, traction control, electronic trailer sway control and Hill Start Assist	●	●	●	●	●	●	●
TRANSMISSION 6-speed automatic, electronically controlled with overdrive and Tow/Haul mode. Includes Cruise Grade Braking and Powertrain Grade Braking.	●	●	●	●	●	●	●
INTEGRATED TRAILER BRAKE CONTROLLER Requires Trailing Package on WT and LT models. Included with Max Trailing Package and High Country Premium Package.	●	●	●	●	●	●	●
TRANSFER CASE 2-speed. Includes floor-mounted shifter (4WD models only).	●	●	—	—	—	—	—
AutoTrac active transfer case (4WD models only)	—	—	●	●	●	●	●
Z71 EQUIPMENT Includes monotube Rancho® brand shocks, Hill Descent Control, underbody transfer case shield on 4WD models and recovery hooks	—	—	—	●	—	●	—

INSTRUMENTATION AND CONTROLS

DRIVER INFORMATION CENTER With monochromatic 3.5" diagonal display. Provides warning messages, odometer, trip odometer and basic vehicle information.	●	●	—	—	—	—	—
With 4.2" diagonal color display. Includes driver personalization, warning messages, odometer, trip odometer and vehicle information.	—	—	●	●	●	●	●
DEFROSTER Rear-window electric. On LT and LT Z71 models, included and only available with LT Convenience Package, All Star Edition or LT Plus Package.	●	●	●	●	●	●	●
POWER-ADJUSTABLE PEDALS On LT and LT Z71 models, included and only available with LT Plus Package. On LTZ and LTZ Z71 models, included and only available on LTZ Plus Package. On High Country, included and only available with High Country Premium Package. Not available on Regular Cab models.	—	—	●	●	●	●	●
110-VOLT POWER OUTLET In-cabin, 3-prong, household-style outlet. Included and only available with WT Convenience Package on 1WT models. On LT and LT Z71 models, included and only available with LT Convenience Package or All Star Edition.	●	●	●	●	●	●	●
STEERING WHEEL Leather-wrapped with audio and cruise controls	—	—	●	●	●	●	●
Heated and leather-wrapped with audio and cruise controls on LTZ and LTZ Z71 models. Included and only available with LTZ Plus Package. On High Country, included and only available with High Country Premium Package.	—	—	—	●	●	●	●
STEERING COLUMN Tilt-Wheel, manual operation	●	●	●	—	—	—	—
Tilt-Wheel and telescopic manual operation. On LT and LT Z71 models, included and only available with LT Convenience Package or All Star Edition. Not available with 4.3L engine.	—	—	●	●	●	●	●

SEATING

SEATS Front 40/20/40 split bench, 3-passenger, driver and front-passenger manual recline with outboard head restraints and center fold-down armrest with storage. Vinyl has fixed lumbar and cloth has manually adjustable driver lumbar.	●	●	—	—	—	—	—
Front 40/20/40 split bench, 3-passenger. Available in cloth or leather-appointed. Includes driver and front-passenger recline with outboard head restraints and center fold-down armrest with storage. Also includes manually adjustable driver lumbar and lockable storage compartment in center seat cushion.	—	—	●	●	—	—	—
Seat adjuster, driver 10-way power. Requires bench seating. Included with LT Convenience Package or All Star Edition.	—	—	●	●	—	—	—

KEY ● STANDARD ○ AVAILABLE — NOT AVAILABLE

TRIM LEVELS

CONFIGURATIONS

Front cloth bucket seats with heat. Includes 10-way power driver and 6-way power front-passenger seat adjusters, including driver/front-passenger power recline and driver/front-passenger power lumbar. Also includes adjustable driver head restraint, floor console and storage pockets.	—	—	○	○	—	—	—
Front 40/20/40 leather-appointed split bench, 3-passenger with heat for outboard seats. Includes 10-way power driver and front-passenger seat adjusters, including driver and front-passenger power recline, driver/front-passenger power lumbar, 2-position driver memory and adjustable outboard head restraints.	—	—	—	—	●	●	—
Front full-feature leather-appointed bucket seats with heated seat cushions and seatbacks. Includes 10-way power (12-way High Country) driver and front-passenger seat adjusters, including 2-way power (4-way High Country) lumbar control, 2-position driver memory, adjustable head restraints, floor console and storage pockets.	—	—	—	—	●	●	●
Heated driver and front-passenger seats. On LT models, requires LT Convenience Package with cloth front bench seat. Included with optional front bucket seats or leather-appointed front bench seat.	—	—	○	○	●	●	—
Heated and cooled perforated leather-appointed front bucket seats. Requires front bucket seats with driver-seat memory.	—	—	—	—	○	○	●
Rear folding 3-passenger bench. Double Cab models only. Includes child seat top tether anchor.	●	●	—	—	—	—	—
Rear folding 60/40 split 3-passenger bench. Includes child seat top tether anchor. Not available on Double Cab WT models.	●	●	●	●	●	●	●

INTERIOR DETAILS

CLIMATE CONTROL Single-zone manual air conditioning	●	●	●	●	—	—	—
Dual-zone automatic climate control. On LT and LT Z71 models, included and only available with LT Convenience Package or All Star Edition. Not available on Regular Cab models.	—	○	○	●	●	●	●
CRUISE CONTROL Steering-wheel mounted	●	●	●	●	●	●	●
DOOR LOCKS Power	●	●	●	●	●	●	●
FLOOR COVERING Color-keyed carpeting with rubberized vinyl floor mats. Includes color-keyed carpeted floor mats on High Country. (Double and Crew Cab models include second-row floor mats.)	○	○	●	●	●	●	●
Graphite-colored rubberized vinyl	●	●	○	○	—	—	—
REAR PARK ASSIST Ultrasonic. Included and only available with LT Plus Package.	—	—	○	○	—	—	—
FRONT AND REAR PARK ASSIST Ultrasonic. Included and only available with LTZ Plus Package or Driver Alert Package. On LT models, requires Regular Cab and Driver Alert Package.	—	—	○	—	○	○	●
REAR-VISION CAMERA SYSTEM On LT and LT Z71 models, included and only available with LT Convenience Package or All Star Edition	—	—	○	○	●	●	●
REMOTE START On LT models, included and only available with LT Convenience Package or All Star Edition	—	—	○	○	●	●	●
REMOTE KEYLESS ENTRY Included and only available with Convenience Package on 1WT models	○	○	●	●	●	●	●
REARVIEW MIRROR With manual day/night adjustment	●	●	●	●	—	—	—
With inside rearview auto-dimming feature. On 2WT and LT models, included and only available with Power Camper Mirrors.	—	○	○	—	●	●	●
SILL PLATES Brushed-metal on Z71 and High Country	—	—	—	●	—	●	●
SUNROOF Power sliding with express-open. Crew Cab models only.	—	—	—	—	○	○	○
UNIVERSAL HOME REMOTE On LT and LT Z71 models, included and only available with LT Plus Package. Not available on Regular Cab models.	—	—	○	○	●	●	●
WINDOWS Power with driver express-up and -down and express-down on all other windows. On 1WT models, standard on Double and Crew Cab models.	○	●	●	●	●	●	●
Power rear sliding with rear defroster. On LT and LT Z71 models, included and only available with LT Plus Package. Not available on Regular Cab models.	—	—	○	○	●	●	●

OPTION PACKAGES

WT CONVENIENCE PACKAGE Includes tinted windows, 110-volt outlet, remote keyless entry and power mirrors. Includes power windows on Regular Cab models.	○	—	—	—	—	—	—
LT CONVENIENCE PACKAGE Includes driver 10-way power seat adjuster, manual tilt telescoping steering column (not available with 4.3L engine), remote vehicle start system, Rear-Vision Camera System, rear-window defroster, 110-volt power outlet and front fog lamps. Also includes MyLink® 8" diagonal audio system and dual-zone climate control on Double and Crew Cab models only. Not available with All Star Edition.	—	—	○	○	—	—	—
LT PLUS PACKAGE Includes rear sliding power window, Universal Home Remote, Rear Park Assist, power-adjustable pedals and rear-window defroster. Not available on Regular Cab models.	—	—	○	○	—	—	—
LTZ PLUS PACKAGE Includes power-adjustable pedals, Bose® premium audio system, Front and Rear Park Assist and heated leather steering wheel. Not available on Regular Cab models.	—	—	—	—	○	○	—
DRIVER ALERT PACKAGE Includes Lane Departure Warning, Forward Collision Alert, Safety Alert Driver Seat and Front and Rear Park Assist. Requires heated and cooled driver and front-passenger bucket seats on Double and Crew Cab models. On LT models, requires Jet Black cloth bucket seats on Regular Cab only.	—	—	○	○	○	○	—
HIGH COUNTRY PREMIUM PACKAGE Includes Driver Alert Package, heated steering wheel, power-adjustable pedals and trailer brake controller. Crew Cab models only.	—	—	—	—	—	—	○

¹Full functionality requires compatible Bluetooth and smartphone. Some devices require USB connectivity. Data plan rates apply.



Information Provided by:

TRIM LEVELS	1WT	2WT	LT	LT Z71	LTZ	LTZ Z71	HIGH COUNTRY
OPTION PACKAGES continued							
CHROME ESSENTIALS PACKAGE Includes polished exhaust tip (LPO), chrome recovery hooks (LPO) and 6" assist steps. Not available on Regular Cab models.	—	—	○	—	—	—	—
CHROME BUMPER PACKAGE Includes rear chrome bumper with corner steps and chrome front bumper	○	—	—	—	—	—	—
ALL STAR EDITION Includes driver 10-way power seat adjuster, dual-zone climate control, manual tilt telescoping steering column (not available with 4.3L engine), remote vehicle start system, MyLink ¹ 8" diagonal audio system, Rear-Vision Camera System, rear-window defroster and 110-volt power outlet. On LT models, includes Trailing Package with locking rear differential, PZX 18" aluminum wheels and fog lamps. Not available with Max Trailing Package, LT Convenience Package or Custom Sport Package. On LT Z71 models, includes RD1 18" bright-machined aluminum wheels. Not available with LT Convenience Package. Available on Double and Crew Cab models only.	—	—	○	○	—	—	—
CUSTOM SPORT PACKAGE On LT models, includes body-color mirror caps and body-color door handles, Trailing Package and 20" polished aluminum wheels. Not available with Max Trailing Package or All Star Edition. On LTZ models, includes 20" chrome wheels and Bose sound speakers. Not available with Max Trailing Package. Available on Double and Crew Cab models only.	—	—	○	—	○	—	—
TRAILERING PACKAGE Includes automatic locking rear differential on WT, LT and LT Z71 models, trailer hitch platform and integrated 7-pin and 4-pin connectors. On LT Double and Crew Cab models, included when available Max Trailing Package is ordered.	○	○	○	○	●	●	●
MAX TRAILERING PACKAGE Includes 9.76" rear axle, 3.73 axle ratio, trailer brake controller, enhanced cooling radiator, revised shock tuning for increased control, heavier-duty rear springs and increased RGAWR. Available fall 2013. See your Chevrolet dealer for more details. On LT models, includes Trailing Package and automatic locking rear differential. Requires 5.3L V-8 engine. On LTZ models, requires 5.3L V-8 engine or 6.2L V-8 engine.	—	—	○	—	○	—	—
SNOW PLOW PREP PACKAGE Includes heavy-duty front springs, underbody transfer case shield, 170-amp generator, provisions for roof-mounted lamps and high-capacity air cleaner. Available on Regular Cab 4WD models only.	○	○	○	○	—	—	—
ENTERTAINMENT/COMMUNICATION/NAVIGATION							
4.2" DIAGONAL COLOR RADIO Includes AM/FM, USB port, ² auxiliary jack and SD card slot	●	—	—	—	—	—	—
CHEVROLET MYLINK 4.2" DIAGONAL COLOR RADIO¹ Includes AM/FM/CD/HD, USB ports ² SD card slot, auxiliary jack, Bluetooth ³ streaming audio for music and select phones, hands-free smartphone integration, Pandora [®] internet radio and voice-activated technology for radio and phone. On 1WT models, HD radio is optional.	○	●	●	●	—	—	—
CHEVROLET MYLINK 8" DIAGONAL COLOR TOUCH RADIO¹ Includes AM/FM/SiriusXM ⁴ (standard for 3 months)/HD, USB ports ² SD card slot, auxiliary jack, Bluetooth ³ streaming audio for music and select phones, hands-free smartphone integration, Pandora [®] internet radio and voice-activated technology for radio, phone and customizable themes. On LT models, included and only available with LT Convenience Package or All Star Edition. Not available on Regular Cab models.	—	—	○	○	●	●	●
CHEVROLET MYLINK 8" DIAGONAL COLOR TOUCH RADIO WITH NAVIGATION⁵ Includes all features of 8" Chevrolet MyLink Color Touch Radio plus Navigation feature. Not available on Regular Cab models.	—	—	○	○	○	○	○
Single-slot CD/MP3 player	—	●	●	●	●	●	●
6-SPEAKER AUDIO SYSTEM 4-speaker audio on Regular Cab WT models	●	●	●	●	●	●	●
Bose premium audio system with 6 speakers (7-speaker system including subwoofer when ordered with bucket seats). On LT models, requires LT Convenience Package or All Star Package. On LTZ models, included and only available with LTZ Plus Package or Custom Sport Package.	—	—	○	○	○	○	●
REAR-SEAT DVD ENTERTAINMENT SYSTEM Includes rear-seat DVD/Blu-ray player with 9.2" diagonal LCD display, 2 sets of wireless headphones and A/V remote control. On LTZ models, requires front bucket seats and Bose premium audio system. Replaces single-slot CD/MP3 player. Crew Cab models only. Available fall 2013.	—	—	—	—	○	○	○
BLUETOOTH³ FOR PHONE Personal cell phone connectivity to vehicle audio system. Included and only available with Chevrolet MyLink ¹ 4.2" diagonal Color Radio on 1WT models.	○	●	●	●	●	●	●
ONSTAR⁶ Directions & Connections Plan. 6-month subscription.	○	●	●	●	●	●	●
SIRIUSXM⁴ SATELLITE RADIO Including 3 trial months of service. On 1WT models, requires Chevrolet MyLink ¹ 4.2" diagonal Color Radio and OnStar. ⁶	○	●	●	●	●	●	●
EXTERIOR STYLING AND FUNCTIONALITY							
ASSIST STEPS Chromed tubular with 6" rectangular design. Factory-installed on Crew Cab models only.	○	○	○	○	○	○	○
BUMPERS Front, black	●	—	—	—	—	—	—
Front, chrome. Includes unique lower appearance on Z71 models. On 1WT models, included and only available with Chrome Bumper Package.	○	●	●	●	●	●	—

KEY ● STANDARD ○ AVAILABLE — NOT AVAILABLE

¹Full functionality requires compatible Bluetooth and smartphone. Some devices require USB connectivity. Data plan rates apply. ²Not compatible with all devices. ³Go to gmtotalconnect.com to find out which phones are compatible with the vehicle. ⁴If you subscribe after your trial period, subscriptions are continuous until you call SiriusXM to cancel. See SiriusXM Customer Agreement for complete terms at siriusxm.com. Other fees and taxes will apply. All fees and programming subject to change. For more information about NavTraffic, visit siriusxm.com/navtraffic. For more information about Travel Link, visit siriusxm.com/travelink. XM satellite service is available only to those in the 48 contiguous USA and DC. Sirius, XM and all related marks and logos are trademarks of SiriusXM Radio, Inc. ⁵Full functionality requires compatible Bluetooth and smartphone. Some devices require USB connectivity. Map coverage available in the United States, Puerto Rico and Canada. ⁶OnStar services require vehicle electrical system (including battery), wireless service and GPS satellite signals to be available and operating for features to function properly. OnStar acts as a link to existing emergency service providers. Subscription Service Agreement required. Call 1-888-4ONSTAR (466-7827) or visit onstar.com for OnStar's Terms and Conditions, Privacy Policy, details and system limitations. ⁷A NOTE ON CHILD SAFETY: Always use safety belts and the correct child restraint for your child's age and size, even with air bags. Even in vehicles equipped with the Passenger Sensing System, children are safer when properly secured in a rear seat in the appropriate infant, child or booster seat. Never place a rear-facing infant restraint in the front seat of any vehicle equipped with an active frontal air bag. See your vehicle Owner's Manual and child safety seat instructions for more safety information.

TRIM LEVELS	1WT	2WT	LT	LT Z71	LTZ	LTZ Z71	HIGH COUNTRY
Rear, black with integrated bumper corner steps	●	—	—	—	—	—	—
Rear, chrome with integrated rear bumper corner steps. On 1WT models, included and only available with Chrome Bumper Package.	○	●	●	●	●	●	○
Front, body-color	—	—	—	—	—	—	●
Rear, body-color without rear bumper corner steps. Can be replaced with rear chrome bumper with corner steps.	—	—	—	—	—	—	●
CARGO BOX Movable tie-downs, high mounted (4)	○	○	○	○	○	○	●
Box rail caps	●	●	●	●	●	●	●
DOOR HANDLES Black	●	●	●	●	—	—	—
Body color. Included and only available with Custom Sport Package.	—	—	○	—	—	—	—
Chrome	—	—	—	●	●	●	●
FOG LAMPS Front, halogen. On LT models, included and only available with LT Convenience Package.	—	—	○	●	●	●	●
GRILLE SURROUND Chrome	—	●	●	●	●	●	●
Z71-specific with badge	—	—	—	●	—	●	—
GLASS Solar-Ray tinted	●	—	—	—	—	—	—
Solar-Ray deep-tinted. Included and only available with WT Convenience Package on 1WT models.	○	●	●	●	●	●	●
LIGHTS Halogen reflector headlamps	●	●	●	●	—	—	—
Halogen projector-beam	—	—	—	●	●	●	●
Under-rail LED lighting, cargo box	○	○	○	○	○	○	○
MOLDINGS Bodyside, chrome	—	—	—	—	●	●	●
RECOVERY HOOKS Front frame-mounted (black). Standard on 4WD models. Also included on 2WD Z71 and High Country models.	●	●	●	●	●	●	●
TAILGATE	●	—	—	—	—	—	—
Lockable tailgate includes EZ-Lift and Lower Tailgate feature	—	—	●	●	●	●	●
WHEELHOUSE LINERS Rear. Double Cab and Crew Cab models only.	—	—	●	●	●	●	●
OUTSIDE MIRRORS							
MIRRORS Black, manual	●	—	—	—	—	—	—
Black, power-adjustable with heated glass and driver-side spotter mirror. Included and only available with WT Convenience Package on WT models. Mirror caps on LT models are upgradable to body color when Custom Sport Package is ordered.	○	●	●	●	—	—	—
Chrome cap, heated, power-adjustable, power-folding and driver-side auto-dimming with integrated turn signal indicators and puddle lamps (includes driver-side spotter mirror)	—	—	—	—	●	●	●
Black, vertical camper-style with manual folding and extension and lower convex spotter glass. Requires Trailing Package.	○	—	—	—	—	—	—
Black, heated, power-adjustable vertical camper-style with manual folding and extension and lower convex spotter glass. Requires Trailing Package on 2WT models. Requires Max Trailing Package on LT and LTZ models. Not available on Regular Cab LT models.	—	○	○	—	○	—	—
SAFETY AND SECURITY							
AIR BAGS⁷ Dual-stage frontal for driver and front passenger with Passenger Sensing System	●	●	●	●	●	●	●
Front-seat-mounted side-impact driver and right front-passenger air bags for thorax and pelvis protection	●	●	●	●	●	●	●
Front and rear head curtain side-impact air bags for all outboard seating positions	●	●	●	●	●	●	●
DAYTIME RUNNING LAMPS With automatic lamp control	●	●	●	●	●	●	●
LANE DEPARTURE WARNING AND FORWARD COLLISION ALERT Included and only available with Driver Alert Package. On LT models, requires Regular Cab.	—	—	○	—	○	○	○
SAFETY ALERT DRIVER SEAT Included and only available with Driver Alert Package. On LT models, requires Regular Cab.	—	—	○	—	○	○	○
THEFT DETERRENT SYSTEM Unauthorized entry. Included and only available with remote vehicle start system on LT and LT Z71 models.	—	—	○	○	●	●	●
TIRE PRESSURE MONITORING SYSTEM Does not monitor spare tire	●	●	●	●	●	●	●



IMPORTANT WORDS

THE BEST PICKUP COVERAGE IN AMERICA

For 2014, Silverado 1500 comes with the industry's best pickup coverage; it includes: 2-year/24,000-mile recommended scheduled maintenance,¹ 3-year/36,000-mile bumper-to-bumper limited warranty² and 5-year/100,000-mile powertrain limited warranty.² Roadside Assistance and Courtesy Transportation.

Starting with the owner orientation—and full tank of gas—you receive when you take possession of your Silverado to the **24-Hour Roadside Assistance, Courtesy Transportation** and **Travel Benefits**, you receive a portfolio of owner privileges that lasts throughout your warranty. For expert product information, Roadside Assistance or other services, call 1-800-243-8872.

TRAVEL BENEFITS AND ROADSIDE ASSISTANCE Available around the clock: trip routing service, a program for reimbursement for trip interruption due to necessary warranty repairs, towing, flat tire change, jump-starts and more for 5 years or 100,000 miles (whichever comes first).

COURTESY TRANSPORTATION Available at participating dealers: shuttle service, reimbursement of certain public transportation or fuel expenses for overnight warranty repairs, and courtesy rental for overnight work repairs. See your dealer for details.

CHEVROLET OWNER CENTER A complimentary, one-stop resource to enhance your Chevrolet ownership experience. It's easy to sign up. Just go to gm.com/gmownercenter/chevrolet.

SIRIUSXM SATELLITE RADIO



SiriusXM Satellite Radio³ is standard on all Silverado models (available on 1WT). It includes 3 trial months of service. SiriusXM Satellite Radio makes your drive come alive with commercial-free music channels from virtually every genre, artist-dedicated channels, live performances and more. Tune in to live play-by-play from the biggest sports, exclusive entertainment from top personalities, compelling talk, hilarious comedy, world-class news, local traffic and weather and family-friendly programming. Welcome to the world of satellite radio. Visit siriusxm.com for details.

CHEVROLET CERTIFIED SERVICE



Certified Service

To help your Silverado live up to its performance promise, Chevrolet Certified Service—found exclusively at your Chevrolet dealer—is there. With all the engineering excellence in Silverado, GM-trained technicians have the expertise to care for all of it.

A NOTE ON CHILD SAFETY Always use safety belts and the correct child restraint for your child's age and size, even with air bags. Even in vehicles equipped with the Passenger Sensing System, children are safer when properly secured in a rear seat in the appropriate infant, child or booster seat. Never place a rear-facing infant restraint in the front seat of any vehicle equipped with an active frontal air bag. See the Owner's Manual and child safety seat instructions for more safety information.

ADDITIONAL NOTES

TRAILERING AND OFF-ROAD INFORMATION Please carefully review the Owner's Manual for important safety information about trailering or off-road driving in your vehicle.

IMPORTANT WORDS ABOUT THIS CATALOG We have tried to make this catalog comprehensive and factual. We reserve the right, however, to make changes at any time, without notice, in prices, colors, materials, equipment, specifications, models and availability. Specifications, dimensions, measurements, ratings and other numbers in this catalog and other printed materials provided at the dealership or affixed to vehicles are approximates based upon design and engineering drawings and prototypes and laboratory tests. Your vehicle may differ due to variations in manufacture and equipment. Since some information may have been updated since the time of printing, please check with your Chevrolet dealer for complete details. Chevrolet reserves the right to lengthen or shorten the model year for any product for any reason, or to start and end model years at different times. All competitive claims are based on the latest information available at the time of printing and the GM Large Pickup segment.

FLEET ORDERS Some standard content may be deleted with fleet orders. See dealer for details.

ENGINES Chevrolet products are equipped with engines produced by GM Powertrain or other suppliers to GM worldwide. The engines in Chevrolet products may also be used in other GM makes and models.

CHEVROLET.COM See more of Silverado on our Web site: chevrolet.com/new2014silverado. More photos and information; hot links to related subjects; convenient dealer locator; pricing guide, spec out your own vehicle. Or call 1-800-950-CHEV.

AN IMPORTANT NOTE ABOUT ALTERATIONS AND WARRANTIES Installations or alterations to the original equipment vehicle (or chassis) as distributed by General Motors are not covered by the General Motors New-Vehicle Limited Warranty. The special body company, assembler, equipment installer or upfitter is solely responsible for warranties on the body or equipment and any alterations (or any effect of the alterations) to any of the parts, components, systems or assemblies installed by GM. General Motors is not responsible for the safety or quality of design features, materials or workmanship of any alterations by such suppliers.

NEW-VEHICLE LIMITED WARRANTY All Chevrolet light-duty vehicles come with a fully transferable, no-deductible 5-year/100,000-mile (whichever comes first) Powertrain Limited Warranty. GM vehicles registered in the U.S.A. are also covered for 3 years or 36,000 miles (whichever comes first). Coverage includes tires and towing to your nearest Chevrolet dealership. Repairs will be made to correct any vehicle defect and most warranty repairs will be made at no charge. In addition, rust-through corrosion will be covered for 6 years or 100,000 miles (whichever comes first). See dealer for details. The 2014 Silverado 1500 also offers a 2-year/24,000-mile maintenance plan.¹

ASSEMBLY Chevrolet vehicles and their components are assembled or produced by different operating units of General Motors, its subsidiaries or suppliers to GM worldwide. We sometimes find it necessary to produce Chevrolet vehicles with different or differently sourced components than originally scheduled. Since some options may be unavailable when your vehicle is assembled, we suggest that you verify that your vehicle includes the equipment you ordered or, if there are changes, that they are acceptable to you.

GMMOBILITY.COM (1-800-323-9935) GM Mobility offers financial assistance for eligible adaptive equipment to make automotive travel easier for persons with disabilities or special transportation needs. To learn more about special GM Mobility offers, visit gmmobility.com.

GMCARDMEMBERSERVICES.COM Did you know about the family of reward credit cards that can help you get a great deal on a new GM car, light-duty truck, SUV or crossover? With a GM reward card, you accrue earnings on every credit card purchase to use toward the purchase or lease of an eligible new GM vehicle. With three cards to choose from, you're sure to find one that suits you.

¹Covers only scheduled oil changes with filter, tire rotations and 27-point inspections, according to your new vehicle's recommended maintenance schedule for up to 2 years or 24,000 miles, whichever comes first. Does not include air filters. Maximum of 4 service events. Excludes Silverado 2500 and 3500 vehicles. See participating dealer for other restrictions and complete details. ²Whichever comes first. See dealer for limited warranty details. ³If you subscribe after your trial period, *subscriptions are continuous until you call SiriusXM to cancel*. See SiriusXM Customer Agreement for complete terms at siriusxm.com. Other fees and taxes will apply. All fees and programming subject to change. For more information about NavTraffic, visit siriusxm.com/navtraffic. XM satellite service is available only to those in the 48 contiguous USA and DC.



VISIT US AT CHEVY.COM / Share with us at: facebook.com/chevrolet twitter.com/chevrolet youtube.com/chevrolet



FIND NEW ROADS™ 